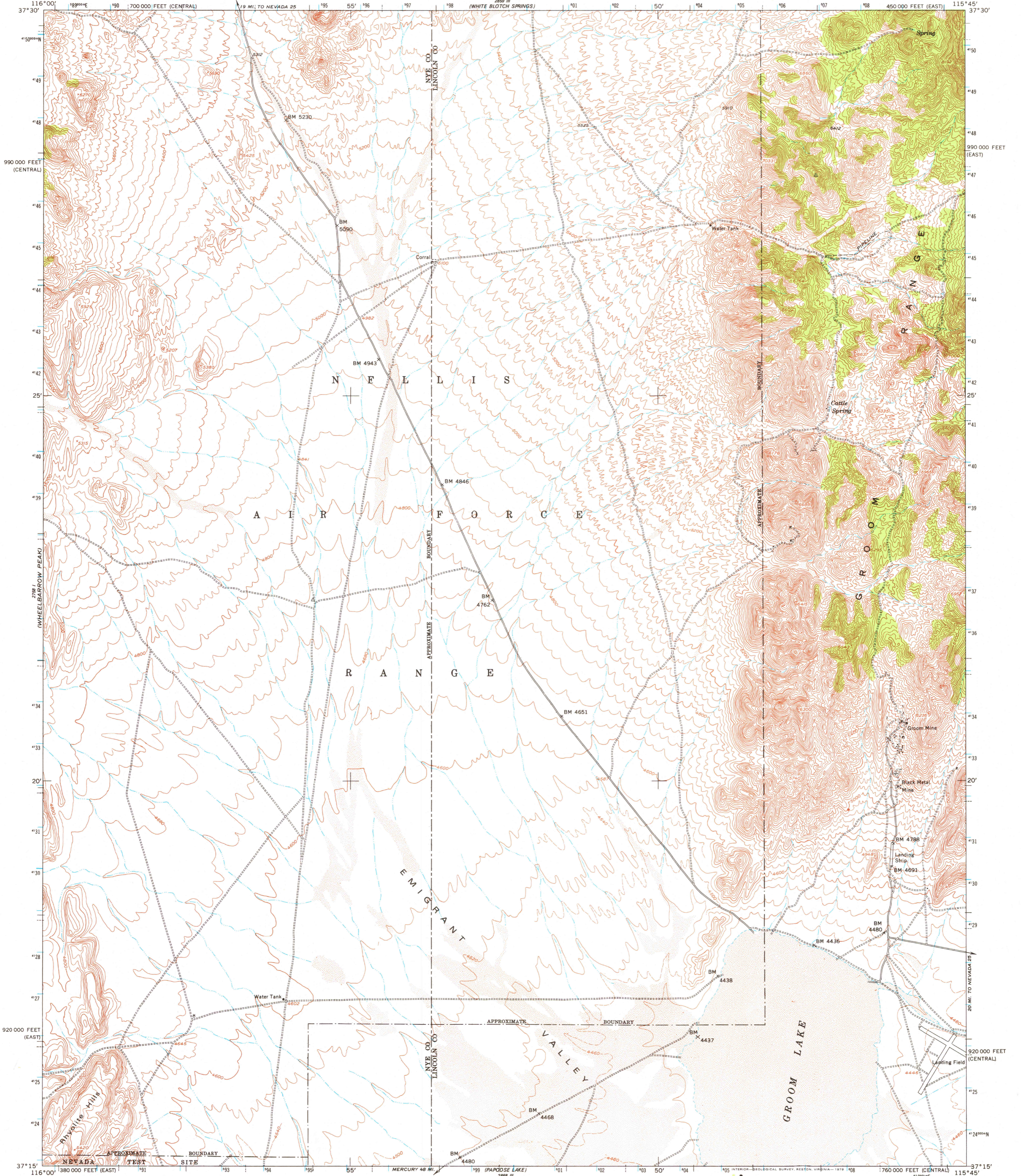




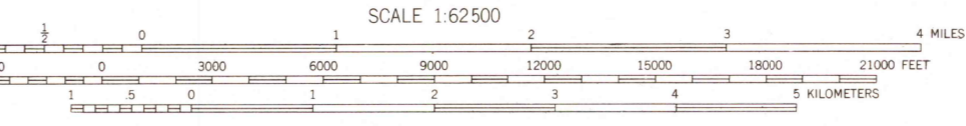
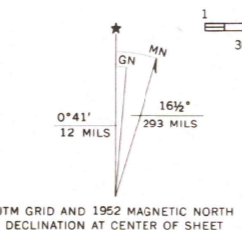
UNITED STATES
DEPARTMENT OF THE INTERIOR
GEOLOGICAL SURVEY

UNITED STATES
DEPARTMENT OF THE ARMY
CORPS OF ENGINEERS

GROOM MINE QUADRANGLE
NEVADA
15 MINUTE SERIES (TOPOGRAPHIC)



Mapped by the Army Map Service
Published for civil use by the Geological Survey
Control by USC&GS and USCE
Topography from aerial photographs by photogrammetric methods
Aerial photographs taken 1952. Field check 1952
Polyconic projection. 1927 North American datum
10,000-foot grids based on Nevada coordinate system,
east and central zones
1000-meter Universal Transverse Mercator grid ticks,
zone 11, shown in blue
Unchecked elevations are shown in brown



CONTOUR INTERVAL 40 FEET
DOTTED LINES REPRESENT 20-FOOT CONTOURS
NATIONAL GEODETIC VERTICAL DATUM OF 1929

THIS MAP COMPLIES WITH NATIONAL MAP ACCURACY STANDARDS
FOR SALE BY U.S. GEOLOGICAL SURVEY, DENVER, COLORADO 80225, OR RESTON, VIRGINIA 22092
A FOLDER DESCRIBING TOPOGRAPHIC MAPS AND SYMBOLS IS AVAILABLE ON REQUEST



ROAD CLASSIFICATION
Light-duty ——— Unimproved dirt - - - - -

GROOM MINE, NEV.
N3715-W11545/15

1952
AMS 2858 IV-SERIES V796

USGS Library
Reston, VA.
Topo Archive