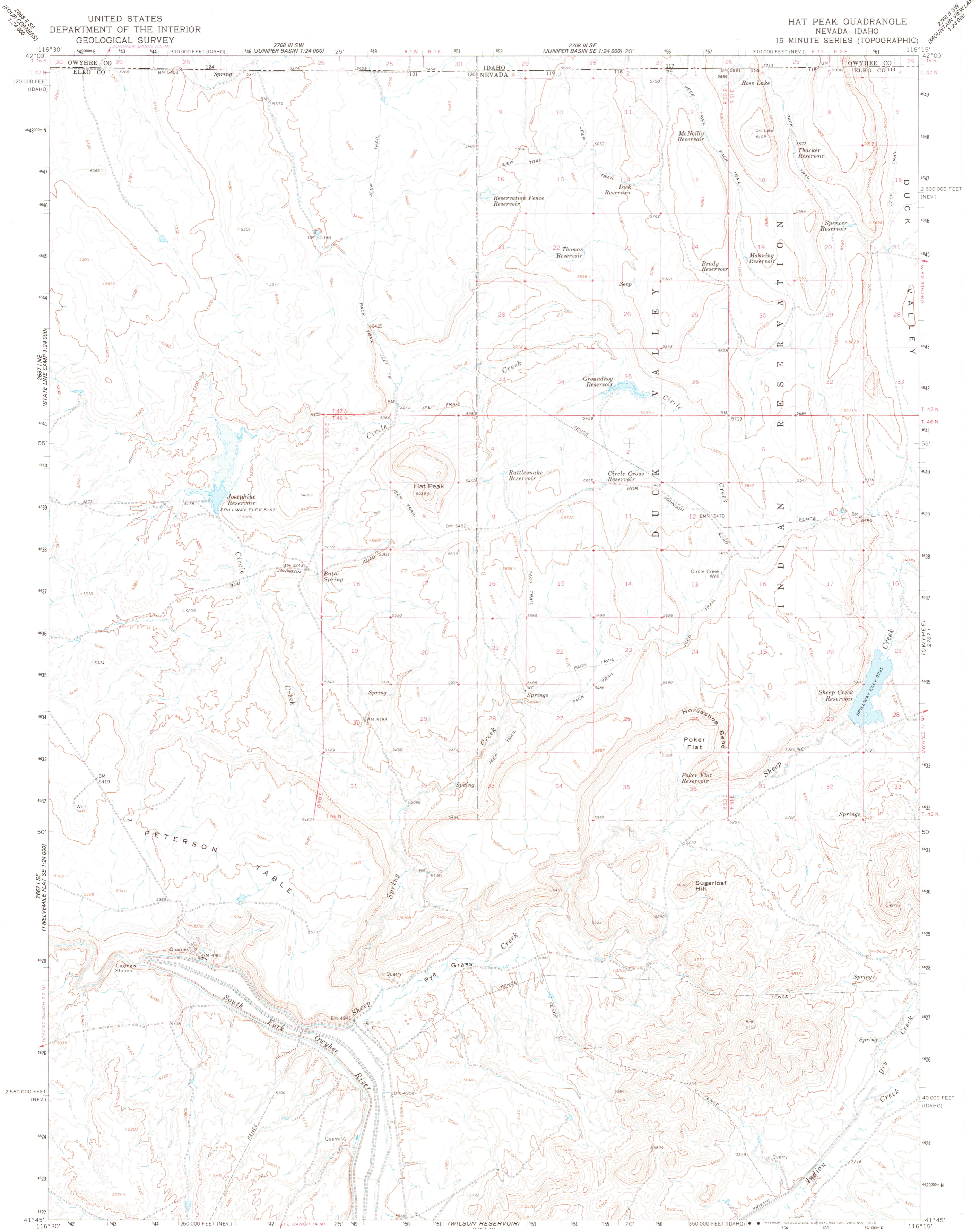
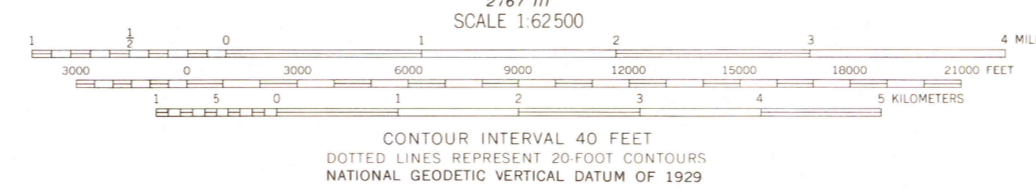


UNITED STATES
DEPARTMENT OF THE INTERIOR
GEOLOGICAL SURVEY

HAT PEAK QUADRANGLE
NEVADA-IDAHO
15 MINUTE SERIES (TOPOGRAPHIC)



Mapped, edited, and published by the Geological Survey
Control by USGS and USC&GS
Topography by photogrammetric methods from aerial photographs taken 1961. Field checked 1964
Polyconic projection. 1927 North American datum 10,000-foot grids based on Nevada coordinate system, east zone and Idaho coordinate system, west zone
1000-meter Universal Transverse Mercator grid ticks, zone 11, shown in blue
Where omitted, land lines have not been established or are not shown because of insufficient data
Areas covered by dashed light-blue pattern are subject to controlled inundation



ROAD CLASSIFICATION
Light duty ——— Unimproved dirt - - - - -



THIS MAP COMPLIES WITH NATIONAL MAP ACCURACY STANDARDS
FOR SALE BY U. S. GEOLOGICAL SURVEY, DENVER, COLORADO 80225, OR RESTON, VIRGINIA 22092
A FOLDER DESCRIBING TOPOGRAPHIC MAPS AND SYMBOLS IS AVAILABLE ON REQUEST

HAT PEAK, NEV.-IDAHO
N4145-W11515/15
1964
AMS 2767 IV--SERIES V796

USGS
Historical File
Topographic Division

FEB 21 1978
2300