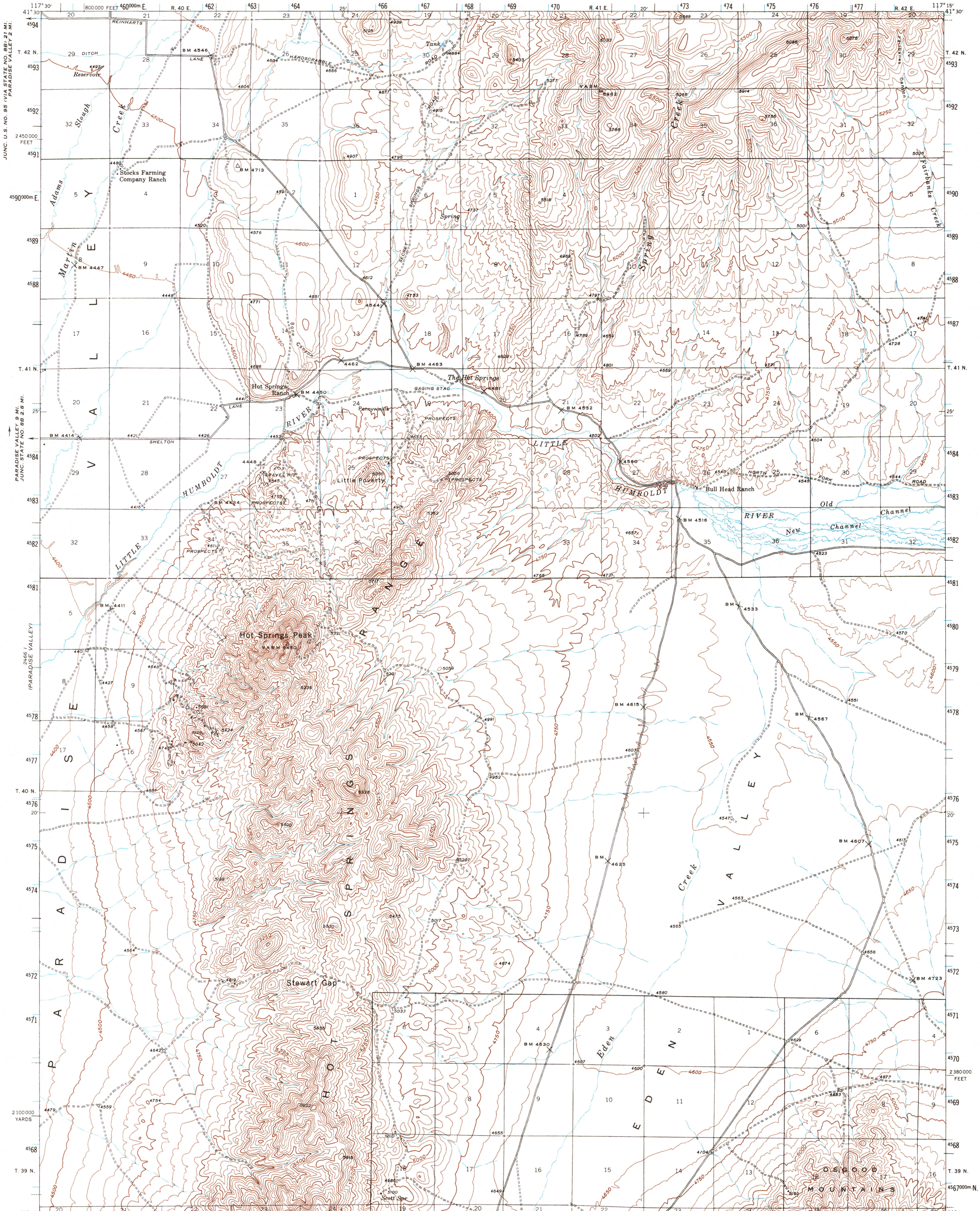


UNITED STATES
DEPARTMENT OF THE INTERIOR
GEOLOGICAL SURVEY

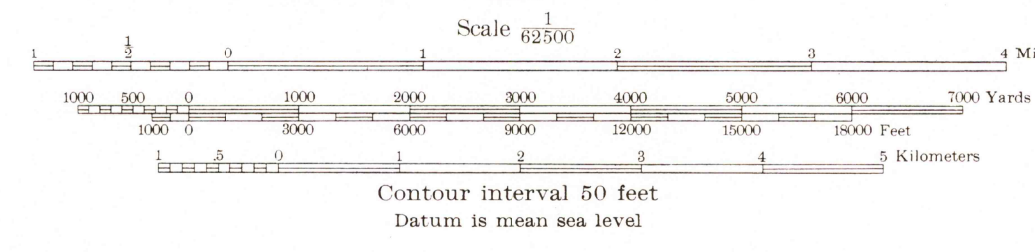
NEVADA
(HUMBOLDT COUNTY)
HOT SPRINGS PEAK QUADRANGLE
15-MINUTE SERIES



Maped by the Geological Survey
1945

ROAD CLASSIFICATION
Light-duty ——— Unimproved dirt - - - - -

UTM GRID AND 1945 MAGNETIC NORTH
DECLINATION AT CENTER OF SHEET



Certain land lines are omitted because of insufficient data. All recovered corners are shown.

Interior—GEOLOGICAL SURVEY, RESTON, VIRGINIA—1974 117° 15' 15" W, 39° 00' 00" N
POLYCONIC PROJECTION. 1927 NORTH AMERICAN DATUM
5000 YARD GRID BASED ON U. S. ZONE SYSTEM, G
10000 FOOT GRID BASED ON NEVADA (WEST) RECTANGULAR COORDINATE SYSTEM
1000-METER UNIVERSAL TRANSVERSE MERCATOR GRID TICS, ZONE 11, SHOWN IN BLUE

HOT SPRINGS PEAK, NEV.
N4115—W11715/15
1945
AMS 2566 IV—SERIES V796