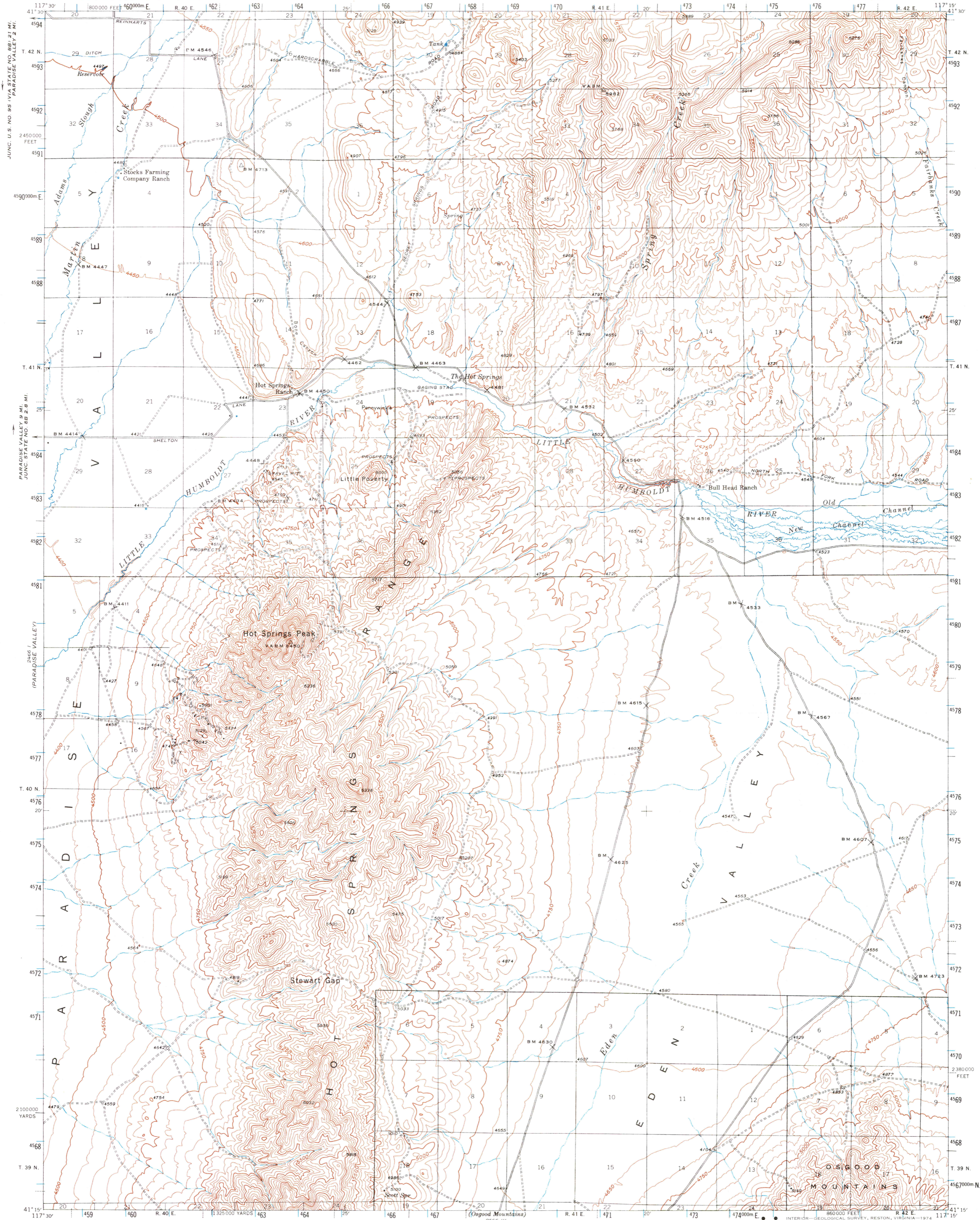


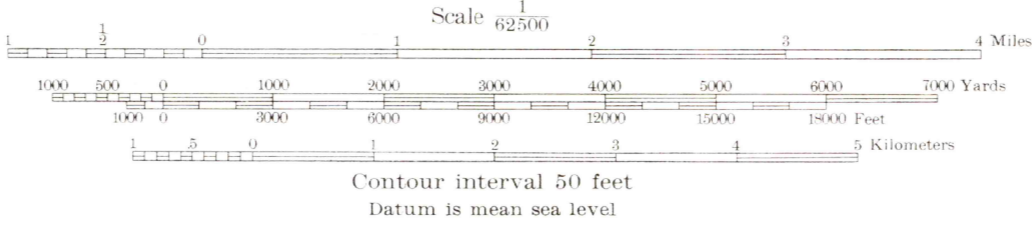
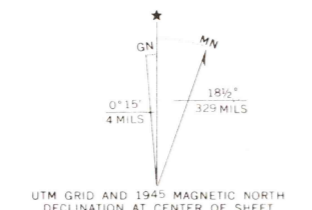
UNITED STATES
DEPARTMENT OF THE INTERIOR
GEOLOGICAL SURVEY

NEVADA
(HUMBOLDT COUNTY)
HOT SPRINGS PEAK QUADRANGLE
15-MINUTE SERIES



Maped by the Geological Survey
1945

ROAD CLASSIFICATION
Light-duty ————— Unimproved dirt —————



Certain land lines are omitted because of insufficient data. All recovered corners are shown.
INTERIOR—GEOLOGICAL SURVEY, RESTON, VIRGINIA—1974
Polyconic projection. 1927 North American datum
5000 yard grid based on U. S. zone system, G
10000 foot grid based on Nevada (West)
rectangular coordinate system
1000-meter Universal Transverse Mercator grid
ticks, zone 11, shown in blue

HOT SPRINGS PEAK, NEV.
N4115—W11715/15
1945
AMS 2566 IV—SERIES V796

FOR SALE BY U. S. GEOLOGICAL SURVEY, DENVER, COLORADO 80225, OR RESTON, VIRGINIA 22092
A FOLDER DESCRIBING TOPOGRAPHIC MAPS AND SYMBOLS IS AVAILABLE ON REQUEST

USGS
HISTORICAL FILE
TOPOGRAPHIC MAPS