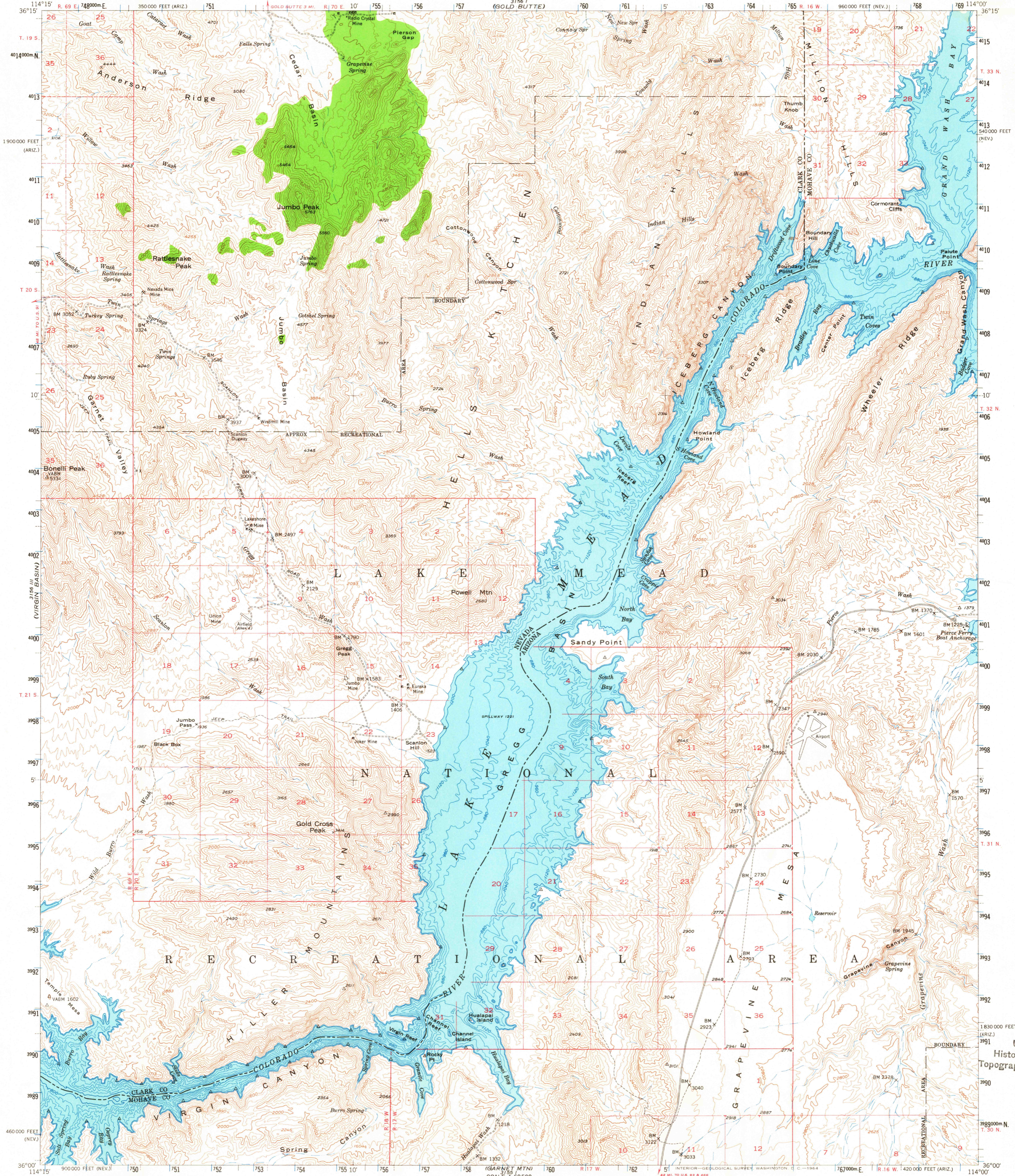


UNITED STATES
DEPARTMENT OF THE INTERIOR
GEOLOGICAL SURVEY

ICEBERG CANYON QUADRANGLE
NEVADA—ARIZONA
15 MINUTE SERIES (TOPOGRAPHIC)



Mapped, edited and published by the Geological Survey

Control by USGS and USC&GS

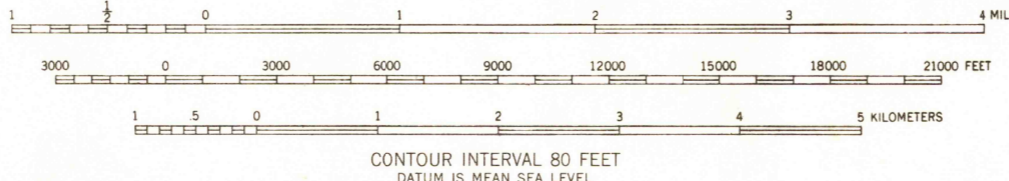
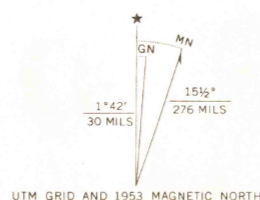
Topography from aerial photographs by multiplex methods
Aerial photographs taken 1950. Field check 1953

Underwater contours compiled from USDA maps
and later sedimentation studies

Polyconic projection. 1927 North American datum
10,000-foot grid based on Nevada coordinate system, east zone
and Arizona coordinate system, west zone

Dashed land lines indicate approximate locations

Unchecked elevations are shown in brown
1000-meter Universal Transverse Mercator grid ticks,
zone 11, shown in blue



ROAD CLASSIFICATION
1964
Light-duty ——— Unimproved dirt - - - - -

ICEBERG CANYON, NEV.—ARIZ.
N3600—W11400/15

1953

AMS 3156 II—SERIES V796

THIS MAP COMPLIES WITH NATIONAL MAP ACCURACY STANDARDS
FOR SALE BY U. S. GEOLOGICAL SURVEY, DENVER 25, COLORADO OR WASHINGTON 25, D. C.
A FOLDER DESCRIBING TOPOGRAPHIC MAPS AND SYMBOLS IS AVAILABLE ON REQUEST

JUL 23 1964

3180