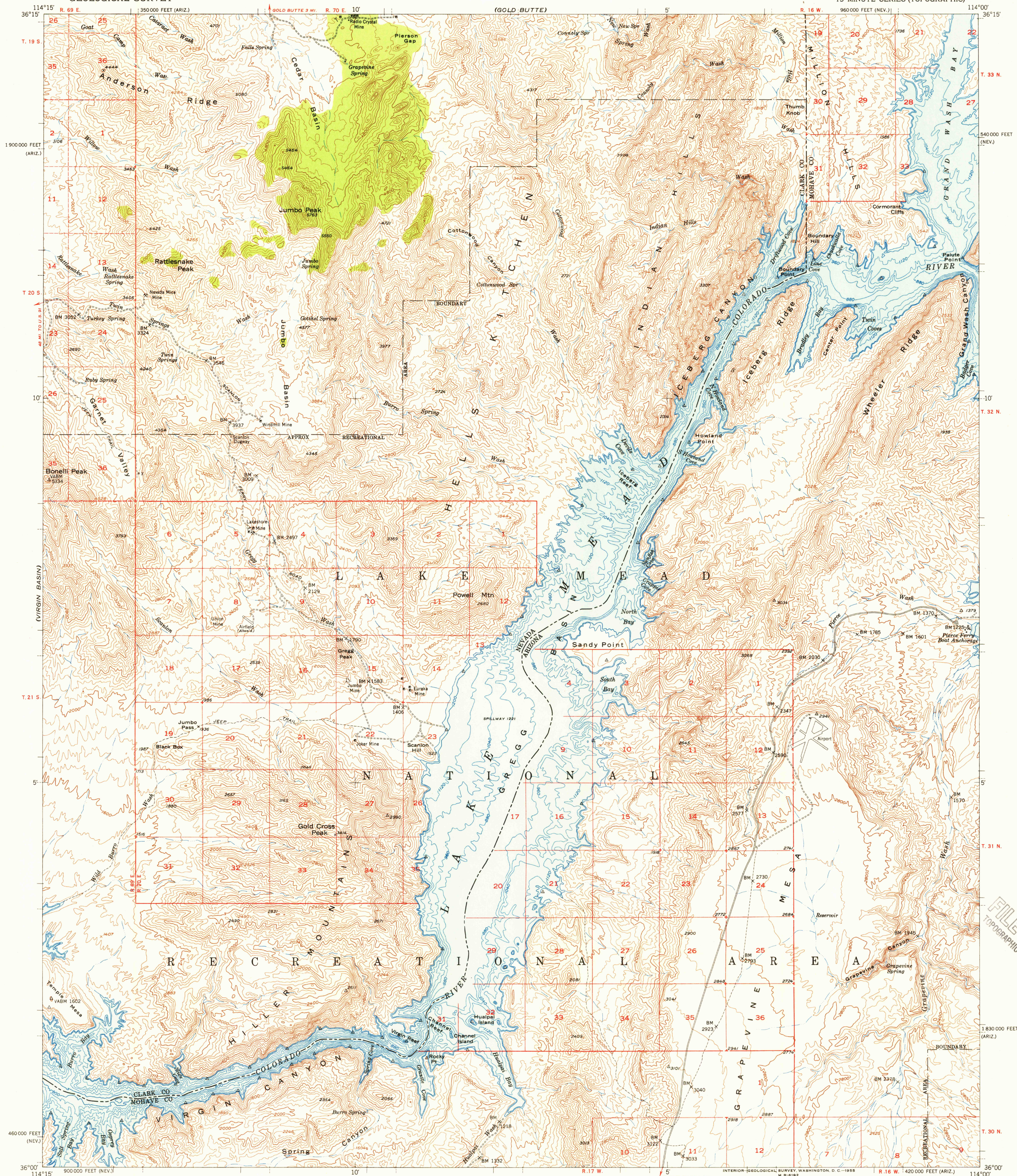


UNITED STATES
DEPARTMENT OF THE INTERIOR
GEOLOGICAL SURVEY

FILE COPY
TOPOGRAPHIC DIVISION

ICEBERG CANYON QUADRANGLE
NEVADA—ARIZONA
15 MINUTE SERIES (TOPOGRAPHIC)



Mapped, edited and published by the Geological Survey

Control by USGS and USC&GS

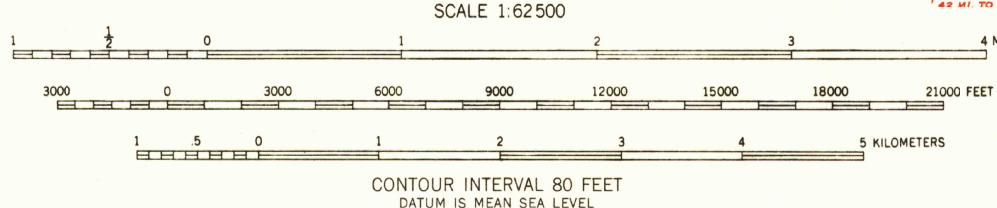
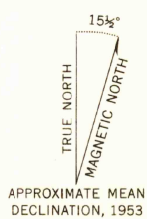
Topography from aerial photographs by multiplex methods
Aerial photographs taken 1950. Field check 1953

Underwater contours compiled from USDA maps
and later sedimentation studies

Polyconic projection. 1927 North American datum
10,000-foot grid based on Nevada coordinate system, east zone
and Arizona coordinate system, west zone

Dashed land lines indicate approximate locations

Unchecked elevations are shown in brown



CONTOUR INTERVAL 80 FEET
DATUM IS MEAN SEA LEVEL



ROAD CLASSIFICATION
Heavy-duty ——— **LANE IS LANE** Light-duty ———
Medium-duty ——— **LANE IS LANE** Unimproved dirt ——— **USGS**
U. S. Route ——— State Route ——— **Historical File**
Topographic Division

ICEBERG CANYON, NEV.—ARIZ.
N3600—W11400/15

1953

THIS MAP COMPLIES WITH NATIONAL MAP ACCURACY STANDARDS
FOR SALE BY U. S. GEOLOGICAL SURVEY, FEDERAL CENTER, DENVER, COLORADO OR WASHINGTON 25, D. C.
A FOLDER DESCRIBING TOPOGRAPHIC MAPS AND SYMBOLS IS AVAILABLE ON REQUEST

FILE COPY
U.S.G.S.
TOPOGRAPHIC DIVISION

APR 18 1955

3210