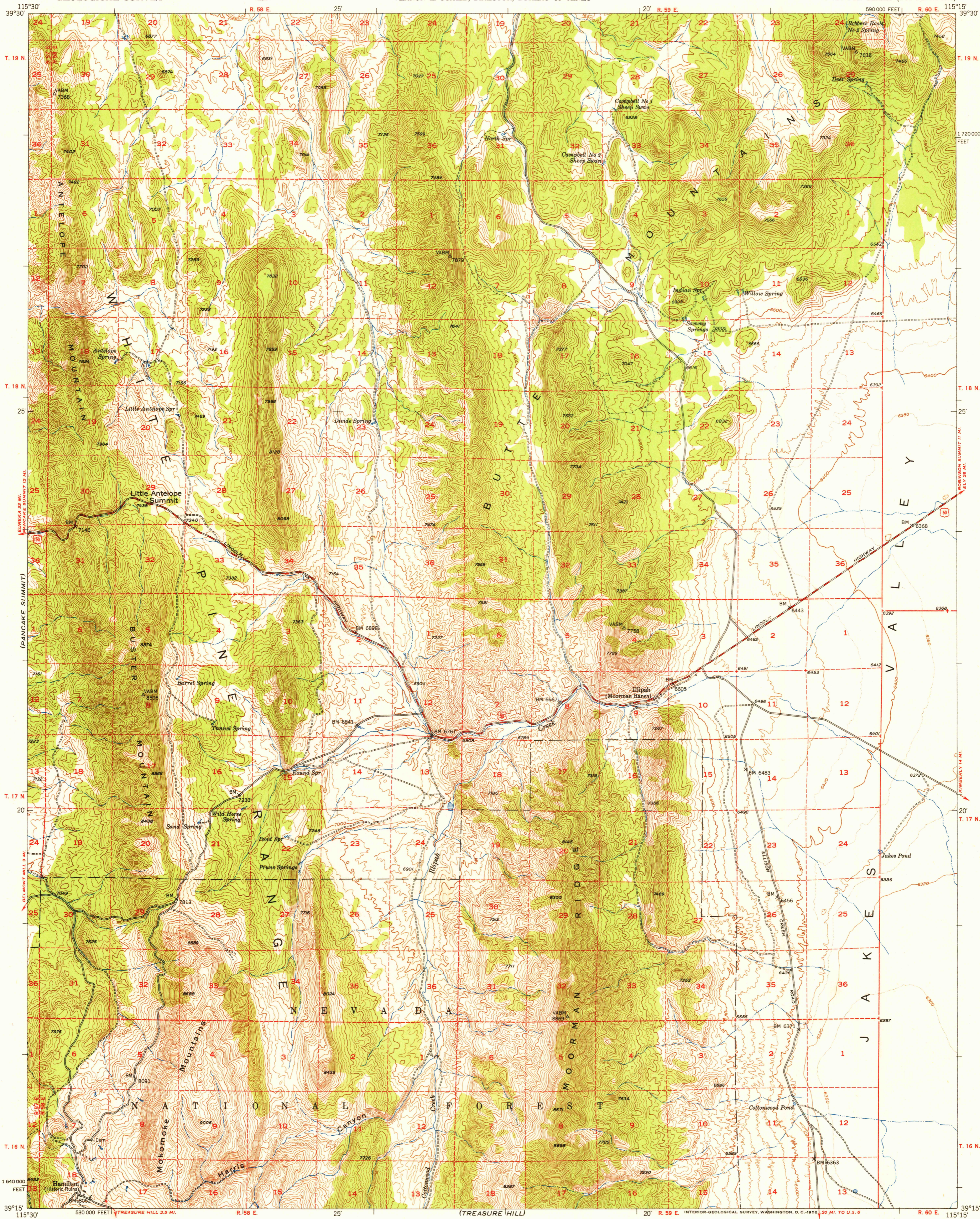


U.S.G.S. FILE COPY Inspection and Mining.

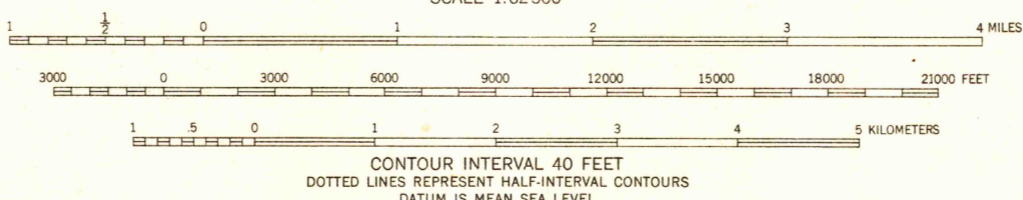
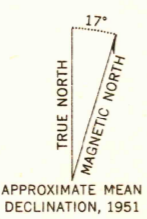
UNITED STATES DEPARTMENT OF THE INTERIOR GEOLOGICAL SURVEY

STATE OF NEVADA CHARLES H. RUSSELL, GOVERNOR VERNON E. SCHEID, DIRECTOR, BUREAU OF MINES

ILLIPAH QUADRANGLE NEVADA-WHITE PINE CO. 15 MINUTE SERIES (TOPOGRAPHIC)



Mapped, edited, and published by the Geological Survey  
Control by USGS and USC&GS  
Topography from aerial photographs by multiplex methods  
Aerial photographs taken 1948. Field check 1951  
Polyconic projection. 1927 North American datum  
10,000-foot grid based on Nevada coordinate system, east zone  
Dashed land lines indicate approximate locations



ROAD CLASSIFICATION  
Heavy-duty **4 LANE 16 LANE** Light-duty **2 LANE 16 LANE**  
Medium-duty **4 LANE 16 LANE** Unimproved dirt **-----**  
U. S. Route **○** State Route **○**

THIS MAP COMPLIES WITH NATIONAL MAP ACCURACY STANDARDS  
FOR SALE BY U. S. GEOLOGICAL SURVEY, FEDERAL CENTER, DENVER, COLORADO OR WASHINGTON 25, D. C.  
A FOLDER DESCRIBING TOPOGRAPHIC MAPS AND SYMBOLS IS AVAILABLE ON REQUEST

U.S.G.S. FILE COPY Inspection and Mining.

ILLIPAH, NEV.  
N3915-W11515/15  
1951

USGS Historical File Geographic Division