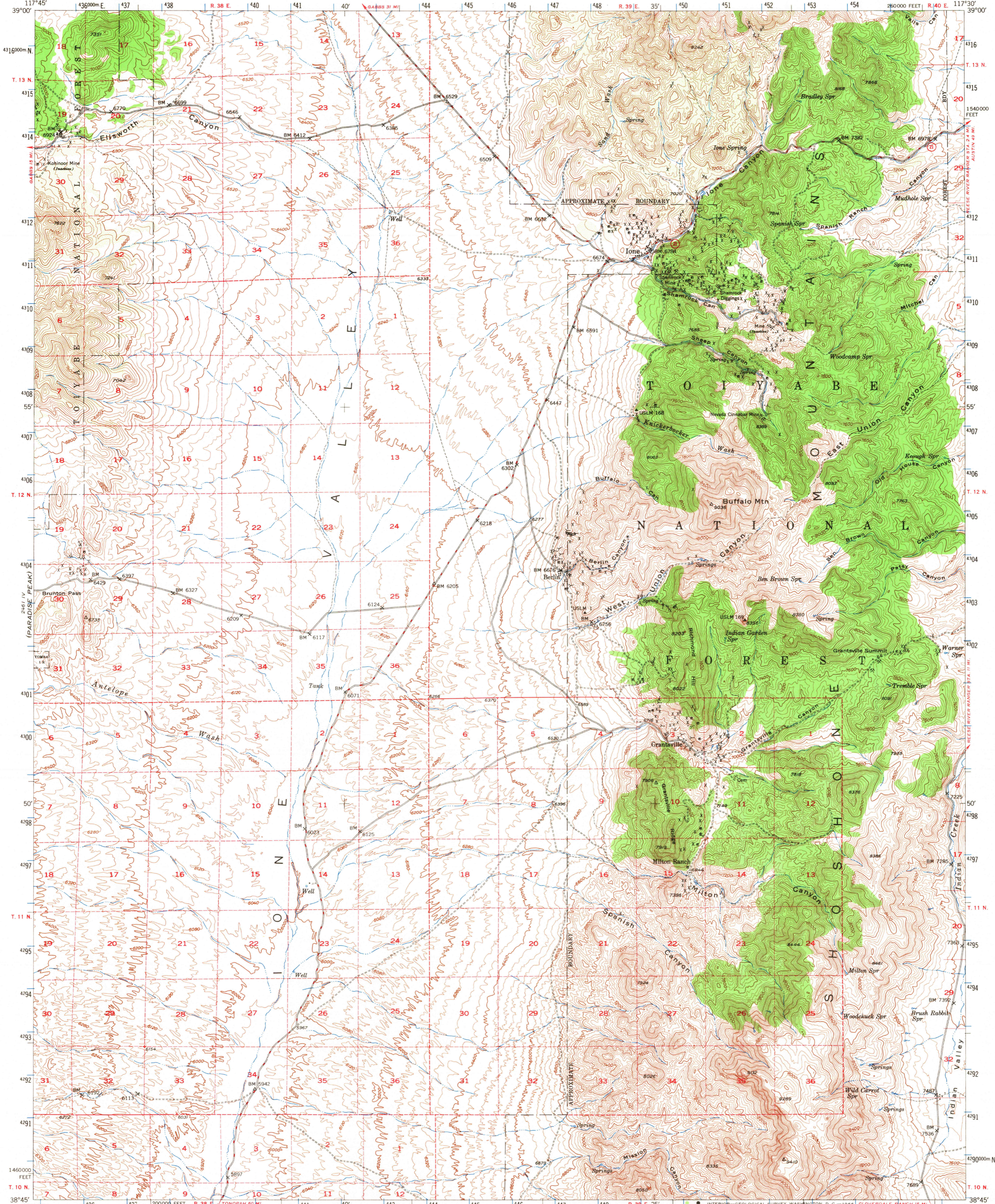
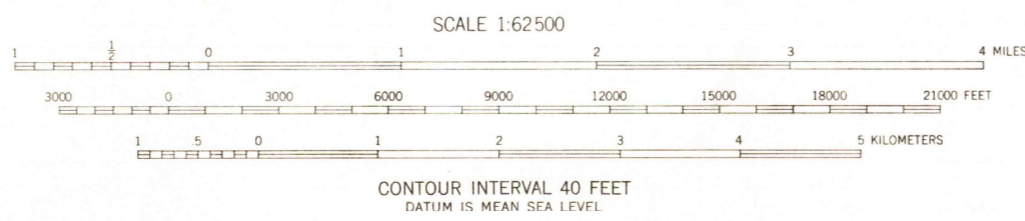
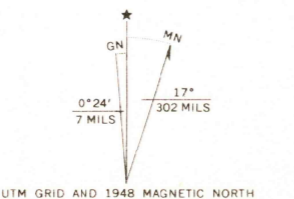


(SOUTH SHOSHONE PEAK)

2462 III
NORTH SHOSHONE PEAK



Mapped, edited, and published by the Geological Survey
Control by USGS and USC&GS
Topography from aerial photographs by multiplex methods
Aerial photographs taken 1946. Field check 1948
Polyconic projection. 1927 North American datum
10,000-foot grid based on Nevada coordinate system,
central zone
Dashed land lines indicate approximate location
1000-meter Universal Transverse Mercator grid ticks,
zone 11, shown in blue



ROAD CLASSIFICATION

| | |
|---|-------------------|
| HARD SURFACE ALL WEATHER ROADS | DRY WEATHER ROADS |
| Heavy-duty — 2 LANE 16 LANE | Improved dirt |
| Medium-duty — 4 LANE 16 LANE | Unimproved dirt |
| Loose-surface, graded, or narrow hard-surface | |
| U. S. Route | State Route |

U.S.G.S.
TOPOGRAPHIC DIVISION

IONE, NEVADA
N3845-W11730/15
1948
AMS 2461 I—SERIES V796

THIS MAP COMPLIES WITH NATIONAL MAP ACCURACY STANDARDS
FOR SALE BY U. S. GEOLOGICAL SURVEY, DENVER, COLORADO 80225 OR WASHINGTON, D. C. 20242
A FOLDER DESCRIBING TOPOGRAPHIC MAPS AND SYMBOLS IS AVAILABLE ON REQUEST

USGS
Historical File
Topographic Division

2050