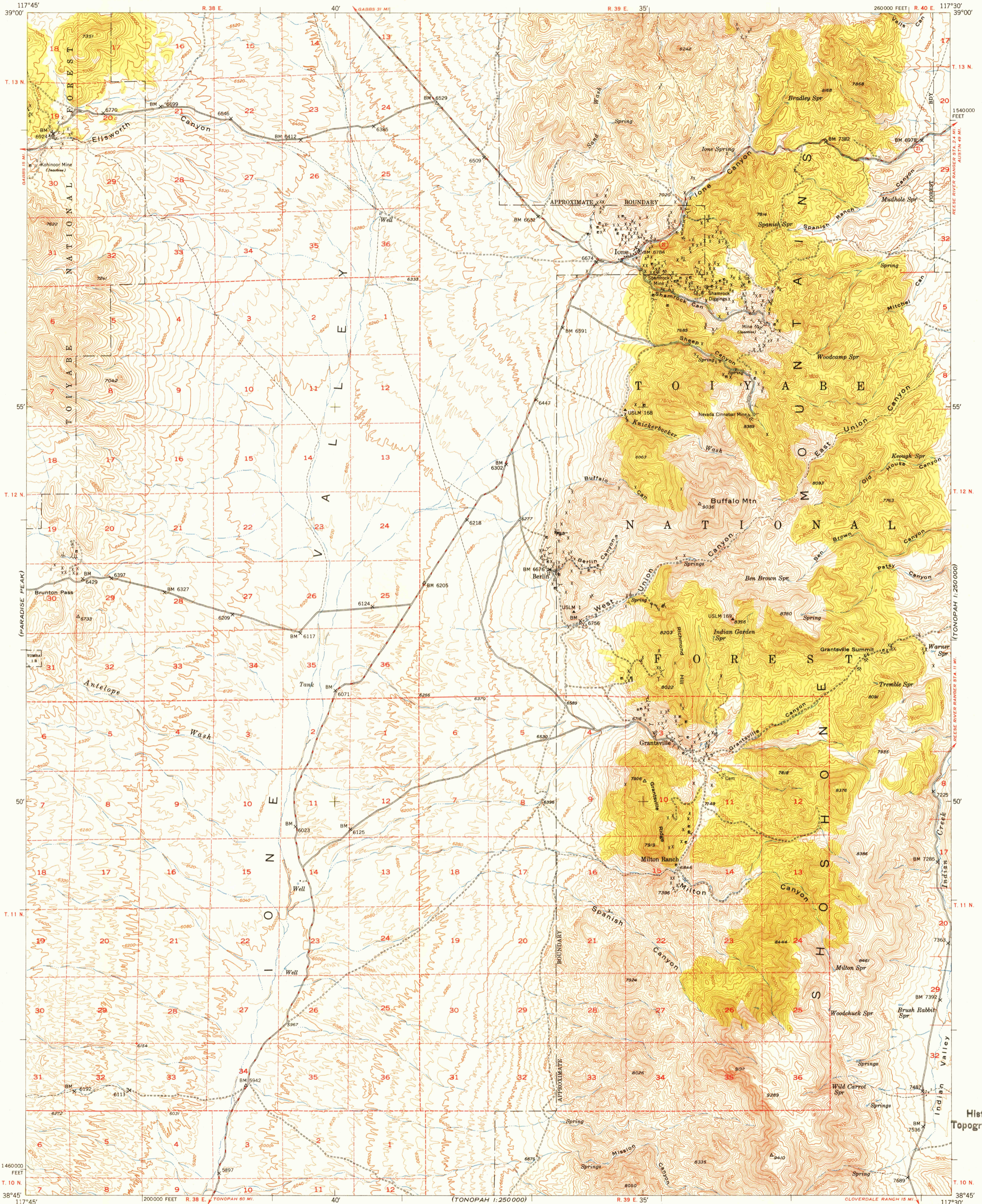
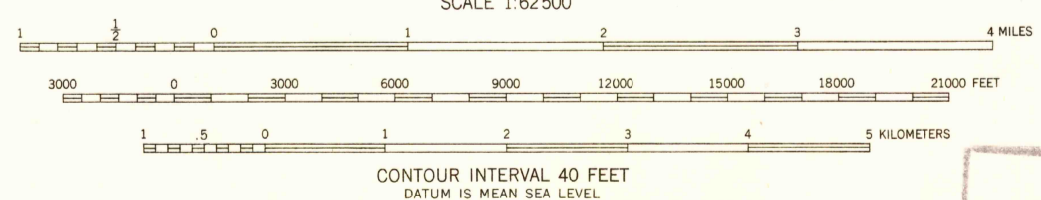
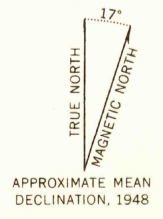


U. S. G. S.
FILE COPY
Inspection and Editing.



117°45' 200000 FEET R. 38 E. TONOPAH 80 MI. 40' (TONOPAH 1:250000)
Mapped, edited, and published by the Geological Survey
Control by USGS and USC&GS
Topography from aerial photographs by multiplex methods
Aerial photographs taken 1946. Field check 1948
Polyconic projection. 1927 North American datum
10,000-foot grid based on Nevada coordinate system,
central zone
Dashed land lines indicate approximate location



ROAD CLASSIFICATION

HARD SURFACE ALL WEATHER ROADS	DRY WEATHER ROADS
Heavy-duty 4 LANE 16 LANE	Improved dirt
Medium-duty 4 LANE 16 LANE	Unimproved dirt
Loose surface, graded, or narrow hard-surface	
U. S. Route	State Route

THIS MAP COMPLIES WITH NATIONAL MAP ACCURACY STANDARDS
FOR SALE BY U. S. GEOLOGICAL SURVEY, DENVER, COLORADO OR WASHINGTON 25, D. C.

U. S. G. S.
FILE COPY
Inspection and Editing.

IONE, NEVADA
N3845-W11730/15
EDITION OF 1950