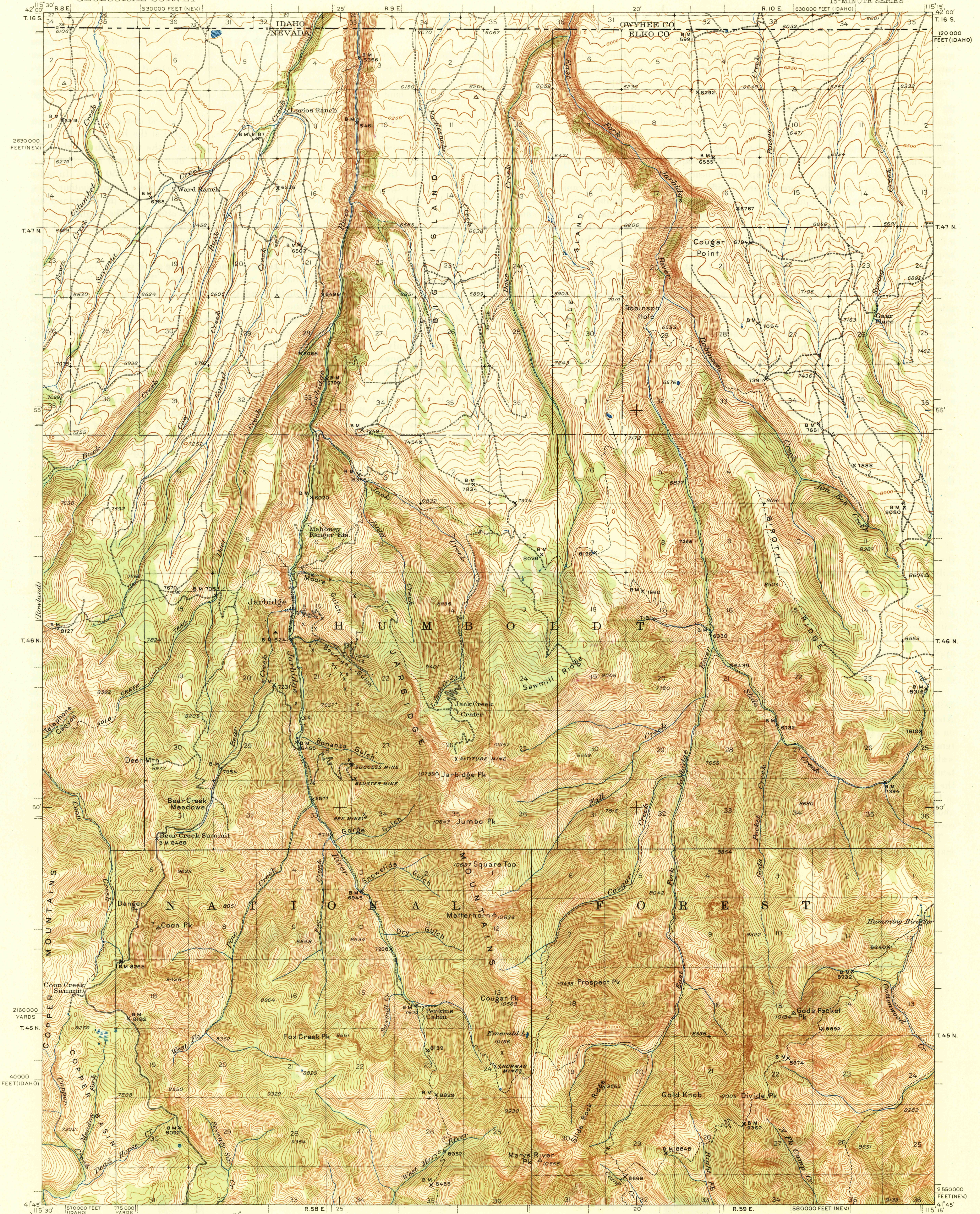


UNITED STATES
DEPARTMENT OF THE INTERIOR
GEOLOGICAL SURVEY

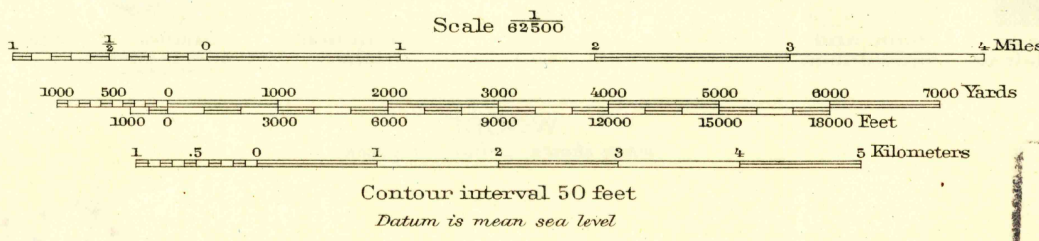
U. S. G. S.
FILE COPY
Inspection and Editing

NEVADA-IDAHO
JARBRIDGE QUADRANGLE
15-MINUTE SERIES



Map by the Geological Survey
1943

TRUE NORTH
MAGNETIC NORTH
APPROXIMATE MEAN
DECLINATION, 1943



USGS
Historical File
Topographic Division

JARBRIDGE, NEV-IDAHO
Edition of 1945

N4145-W11515/15

U. S. G. S.
FILE COPY
Inspection and Editing