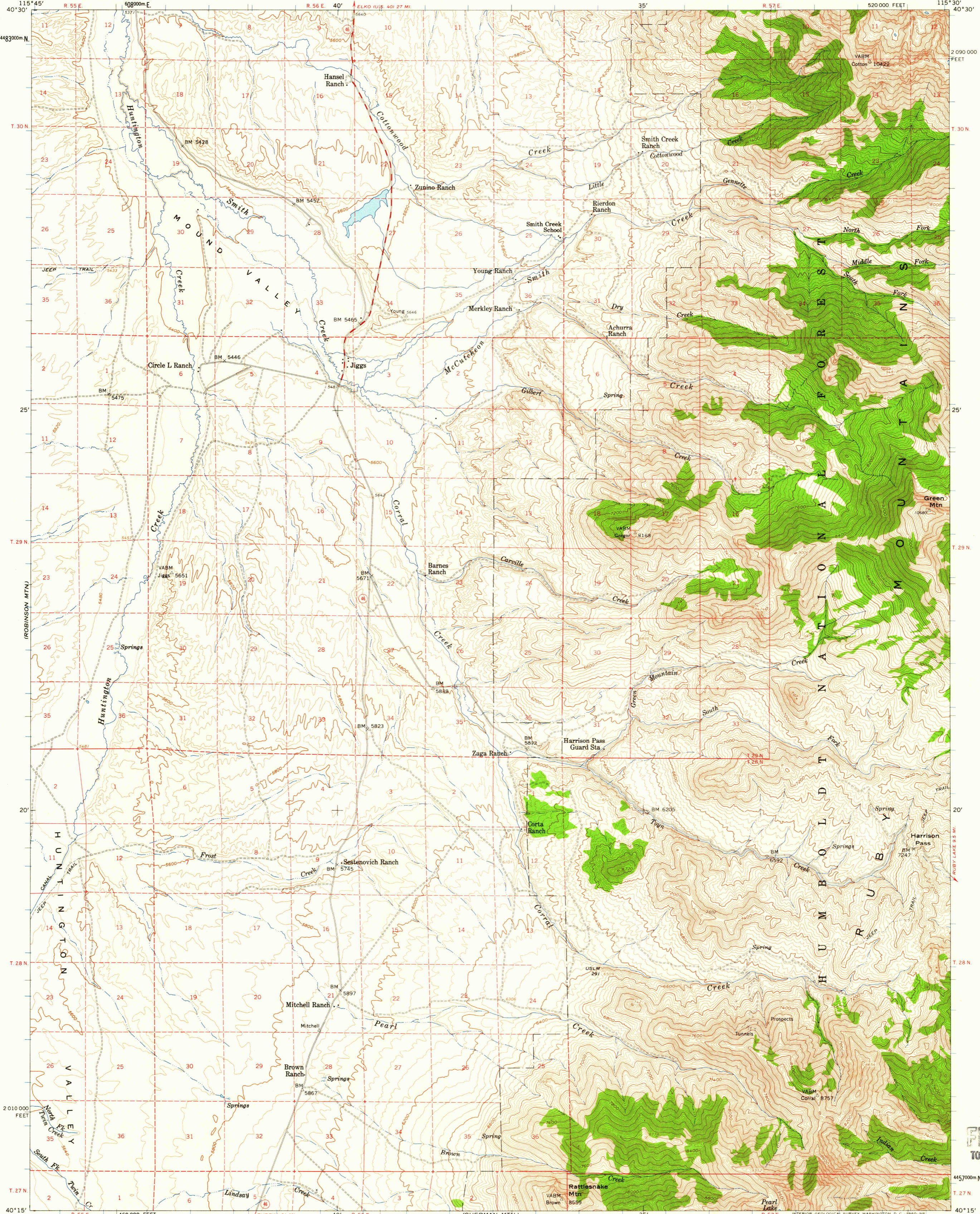


(DIXIE FLATS)

UNITED STATES
DEPARTMENT OF THE INTERIOR
GEOLOGICAL SURVEY

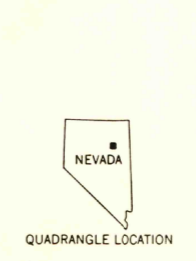
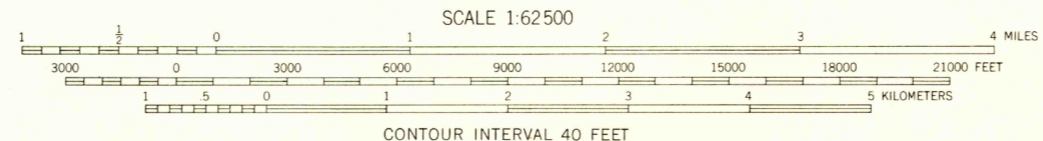
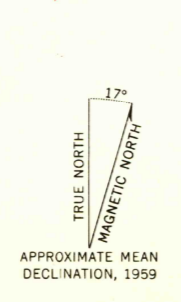
JIGGS QUADRANGLE
NEVADA—ELKO CO.
15 MINUTE SERIES (TOPOGRAPHIC)

SCALE 1:125,000



(RAILROAD PASS)

Mapped, edited, and published by the Geological Survey
Control by USGS and USC&GS
Topography from aerial photographs by photogrammetric methods
and by planimetric surveys 1959. Aerial photographs taken 1956
Polyconic projection. 1927 North American datum
10,000-foot grid based on Nevada coordinate system,
east zone
1000-meter Universal Transverse Mercator grid ticks,
zone 11, shown in blue
Dashed land lines indicate approximate locations
Land lines surveyed in T. 27 and 28 N.—R. 57 E.,
and part of T. 29 N.—R. 57 E.
Unchecked elevations are shown in brown



ROAD CLASSIFICATION
Medium-duty ——— Light-duty ———
Unimproved dirt - - - - -
Slate Route ○

U.S.G.S.
FILE 60
TOPOGRAPHIC DIVISION
USGS
Historical File
Topographic Division

THIS MAP COMPLIES WITH NATIONAL MAP ACCURACY STANDARDS
FOR SALE BY U.S. GEOLOGICAL SURVEY, DENVER 25, COLORADO OR WASHINGTON 25, D. C.
A FOLDER DESCRIBING TOPOGRAPHIC MAPS AND SYMBOLS IS AVAILABLE ON REQUEST

JIGGS, NEV.
N4015—W11530/15

1959

NOV 25 1950

2000