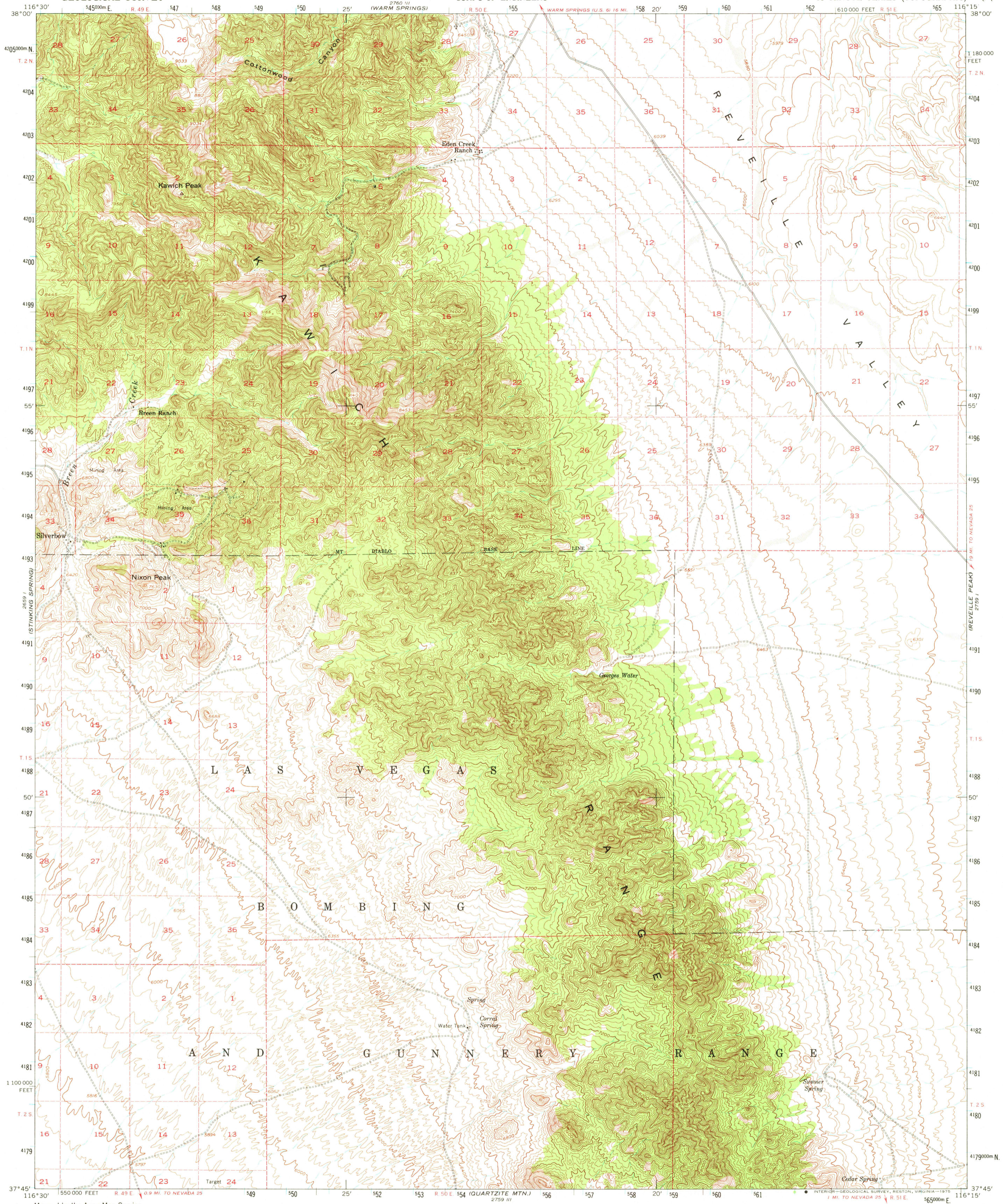


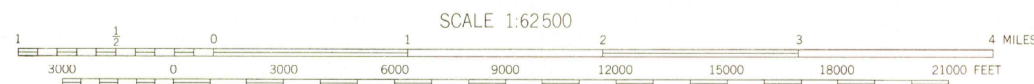
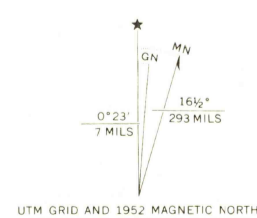
2759 IV  
REVISED  
1952



Mapped by the Army Map Service  
Published for civil use by the Geological Survey  
Control by USC&GS and USCE

Topography from aerial photographs by photogrammetric methods  
Aerial photographs taken 1952. Field check 1952  
Polyconic projection. 1927 North American datum  
10,000-foot grid based on Nevada coordinate system, central zone  
1000 metre Universal Transverse Mercator grid ticks,  
zone 11, shown in blue

Dashed land lines indicate approximate locations  
Unchecked elevations are shown in brown



CONTOUR INTERVAL 40 FEET  
NATIONAL GEODETIC VERTICAL DATUM OF 1929



ROAD CLASSIFICATION  
Light-duty ——— Unimproved dirt - - - - -

KAWICH PEAK, NEV.  
N3745—W11615/15

1952

AMS 2759 IV—SERIES V796

FOR SALE BY U.S. GEOLOGICAL SURVEY, DENVER, COLORADO 80225, OR RESTON, VIRGINIA 22092  
A FOLDER DESCRIBING TOPOGRAPHIC MAPS AND SYMBOLS IS AVAILABLE ON REQUEST

USGS  
HISTORICAL FILE  
TOPOGRAPHIC DIVISION

REMOVED FROM  
USGS AND HISTORICAL MAP ARCHIVES  
2525  
SEP 8 1976