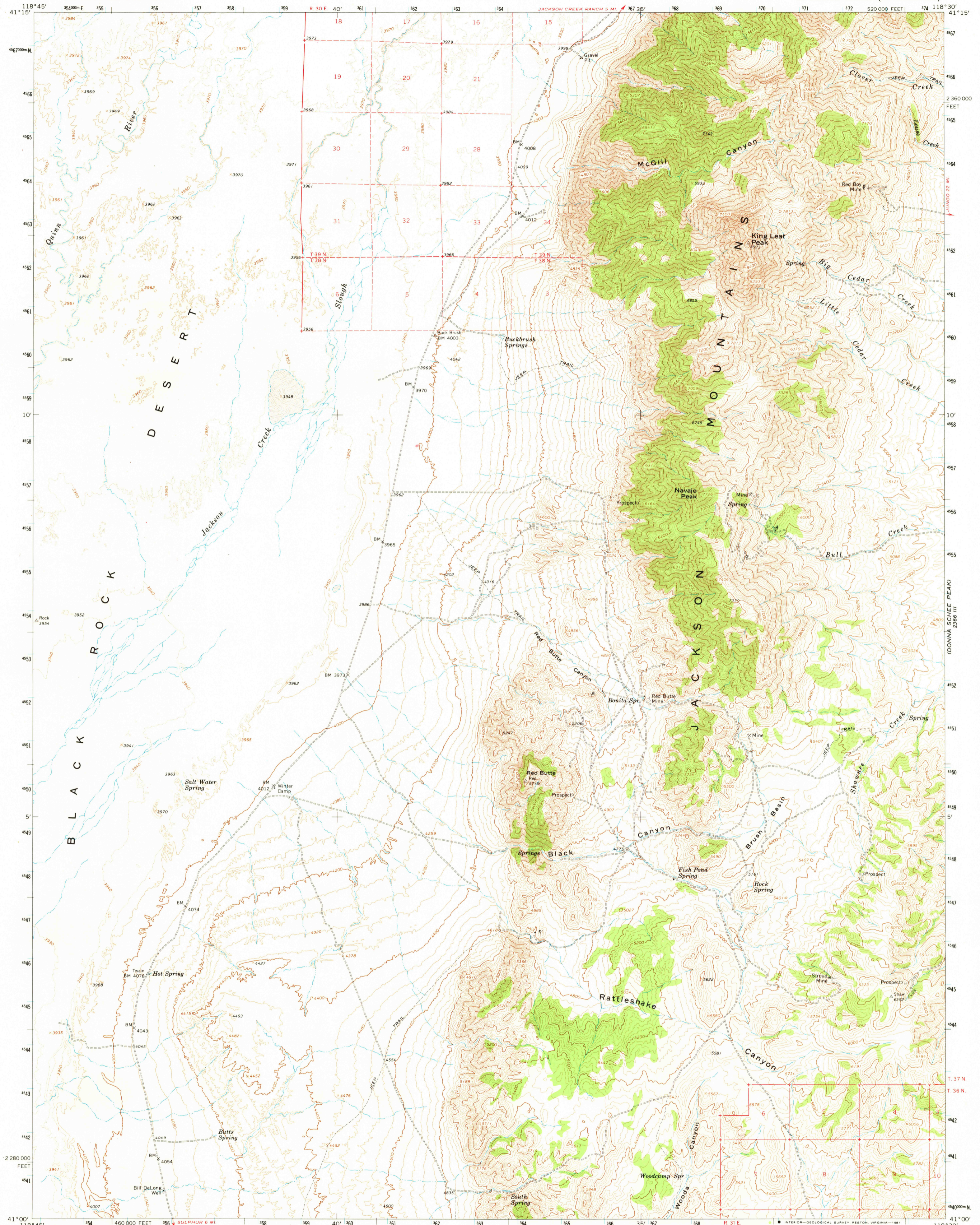
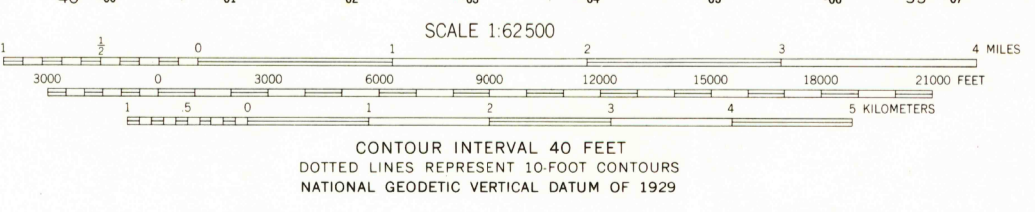
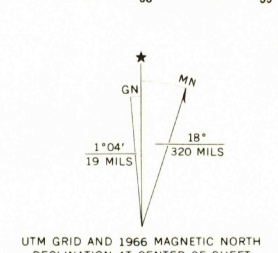


2886 IV  
BOTTLE CREEK



Mapped, edited, and published by the Geological Survey  
Control by USGS and USC&GS  
Topography by photogrammetric methods from aerial  
photographs taken 1961 and 1965. Field checked 1966  
Polyconic projection. 1927 North American datum  
10,000-foot grid based on Nevada coordinate system, west zone  
1000-meter Universal Transverse Mercator grid ticks,  
zone 11, shown in blue  
To place on the predicted North American Datum 1983  
move the projection lines 15 meters north and  
63 meters east  
Where omitted, land lines have not been established  
or are not shown because of insufficient data



THIS MAP COMPLIES WITH NATIONAL MAP ACCURACY STANDARDS  
FOR SALE BY U. S. GEOLOGICAL SURVEY, DENVER, COLORADO 80225, OR RESTON, VIRGINIA 22092  
A FOLDER DESCRIBING TOPOGRAPHIC MAPS AND SYMBOLS IS AVAILABLE ON REQUEST

ROAD CLASSIFICATION  
Unimproved dirt -----  
KING LEAR PEAK, NEV.  
N4100—W11830/15  
1966  
DMA 2266 II—SERIES V796

JUL 7 1982  
RETURN TO:  
USGS AND HISTORICAL MAP ARCHIVES  
E 700