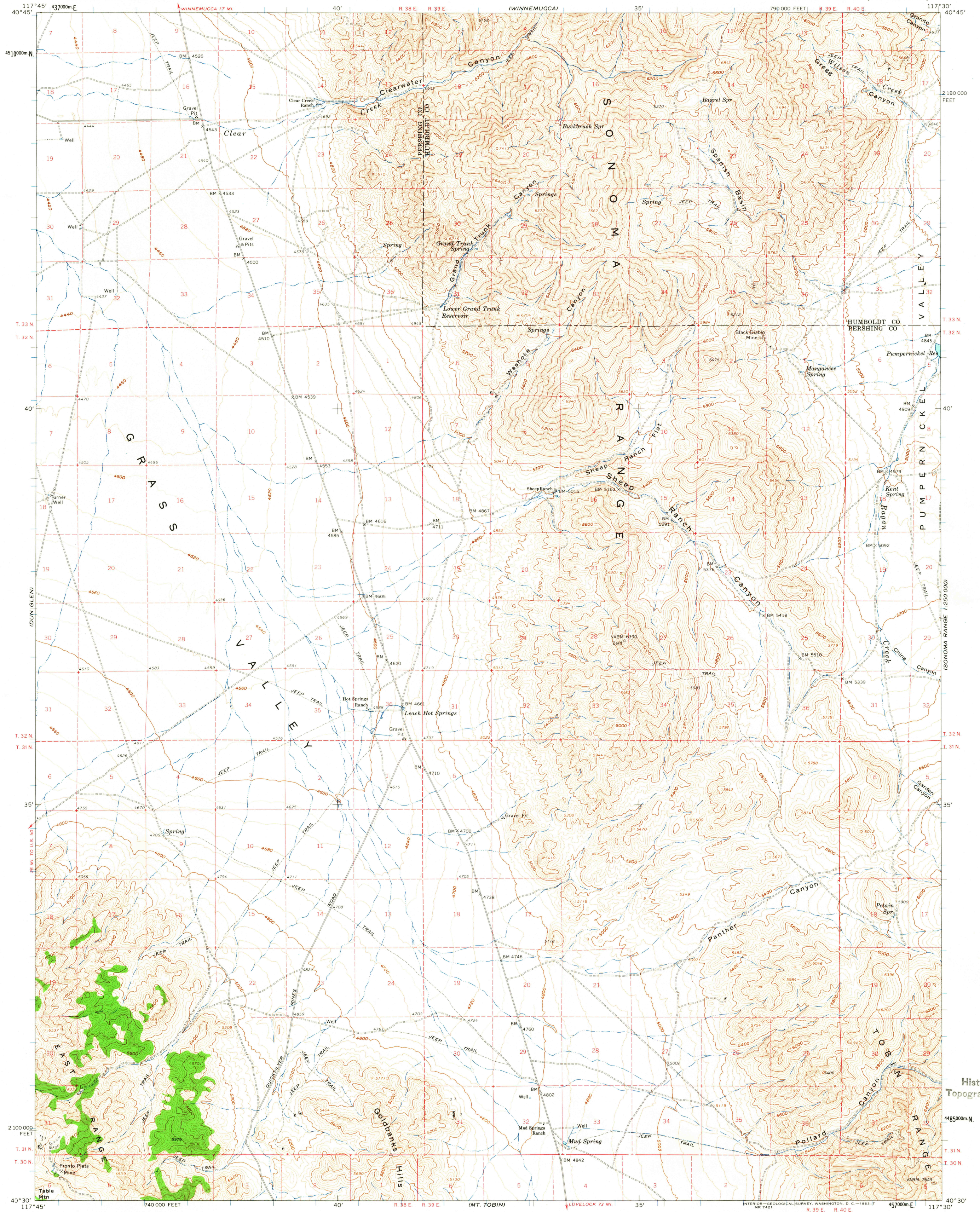
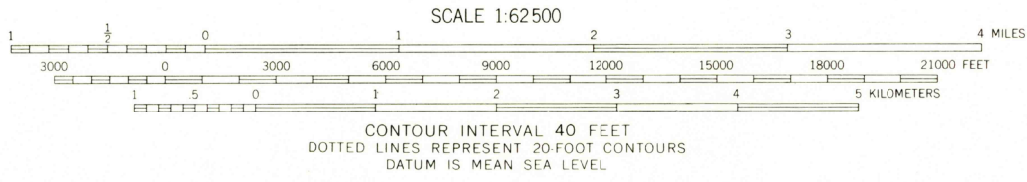
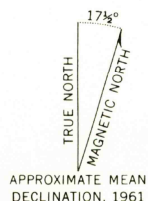


ISONOMA RANGE
1:250 000



Mapped, edited, and published by the Geological Survey
Control by USGS and USC&GS
Topography by photogrammetric methods from aerial photographs taken 1957 and planetable surveys 1961
Polyconic projection. 1927 North American datum
10,000-foot grid based on Nevada coordinate system, west zone
1000-meter Universal Transverse Mercator grid ticks, zone 11, shown in blue
Where omitted, land lines have not been established



CONTOUR INTERVAL 40 FEET
DOTTED LINES REPRESENT 20 FOOT CONTOURS
DATUM IS MEAN SEA LEVEL

ROAD CLASSIFICATION
Light-duty Unimproved dirt



U.S.G.S.
FILE COPY
LEACH HOT SPRINGS, NEV.
N4030-W11730/15
TOPOGRAPHIC DIVISION
1961

THIS MAP COMPLIES WITH NATIONAL MAP ACCURACY STANDARDS
FOR SALE BY U. S. GEOLOGICAL SURVEY, DENVER 25, COLORADO OR WASHINGTON 25, D. C.
A FOLDER DESCRIBING TOPOGRAPHIC MAPS AND SYMBOLS IS AVAILABLE ON REQUEST

USGS
Historical File
Topographic Division

AUG 14 1963

2235