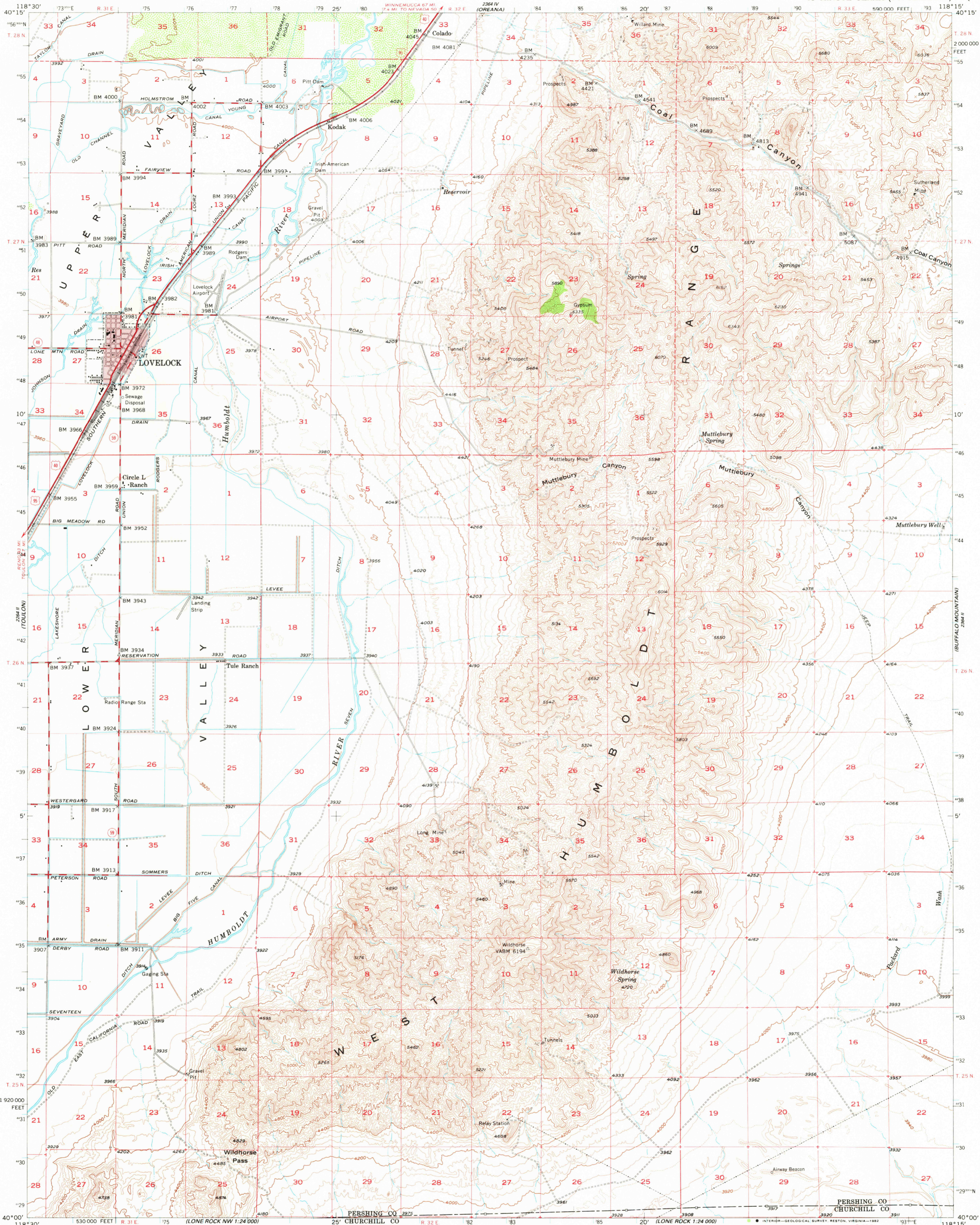
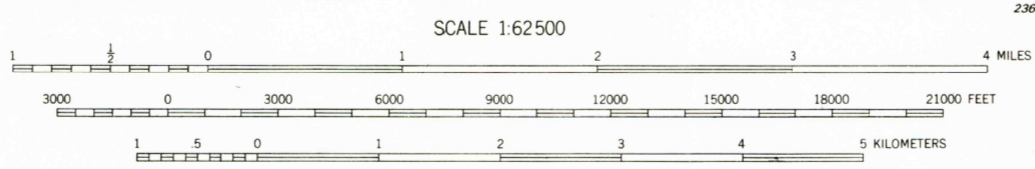
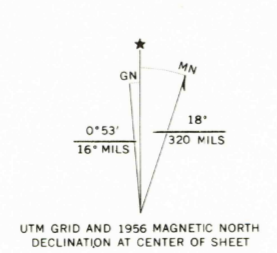


UNITED STATES
DEPARTMENT OF THE INTERIOR
GEOLOGICAL SURVEY

LOVELOCK QUADRANGLE
NEVADA
15 MINUTE SERIES (TOPOGRAPHIC)



Mapped, edited, and published by the Geological Survey
Control by USGS and USC&GS
Topography from aerial photographs by photogrammetric methods
and by planetable surveys 1956. Aerial photographs taken 1954
Polyconic projection. 1927 North American datum
10,000-foot grid based on Nevada coordinate system,
west zone
1000-meter Universal Transverse Mercator grid ticks,
zone 11, shown in blue
To place on the predicted North American Datum 1982
move the projection lines 14 meters north and
83 meters east
Red tint indicates areas in which only
landmark buildings are shown
Dashed land lines indicate approximate locations



CONTOUR INTERVAL 40 FEET
DASHED LINES REPRESENT 20-FOOT CONTOURS
NATIONAL GEODETIC VERTICAL DATUM OF 1929

THIS MAP COMPLIES WITH NATIONAL MAP ACCURACY STANDARDS
FOR SALE BY U.S. GEOLOGICAL SURVEY, DENVER, COLORADO 80225, OR RESTON, VIRGINIA 22092
A FOLDER DESCRIBING TOPOGRAPHIC MAPS AND SYMBOLS IS AVAILABLE ON REQUEST



ROAD CLASSIFICATION
Heavy-duty ——— Light-duty ———
Medium-duty ——— Unimproved dirt - - - - -
U.S. Route □ State Route ○

LOVELOCK, NEV.
N4000-W11815/15
1956
DMA 2364 III-SERIES V796

RETURN TO:
USGS AND HISTORICAL MAP ARCHIVES

MAY 2 1963
310