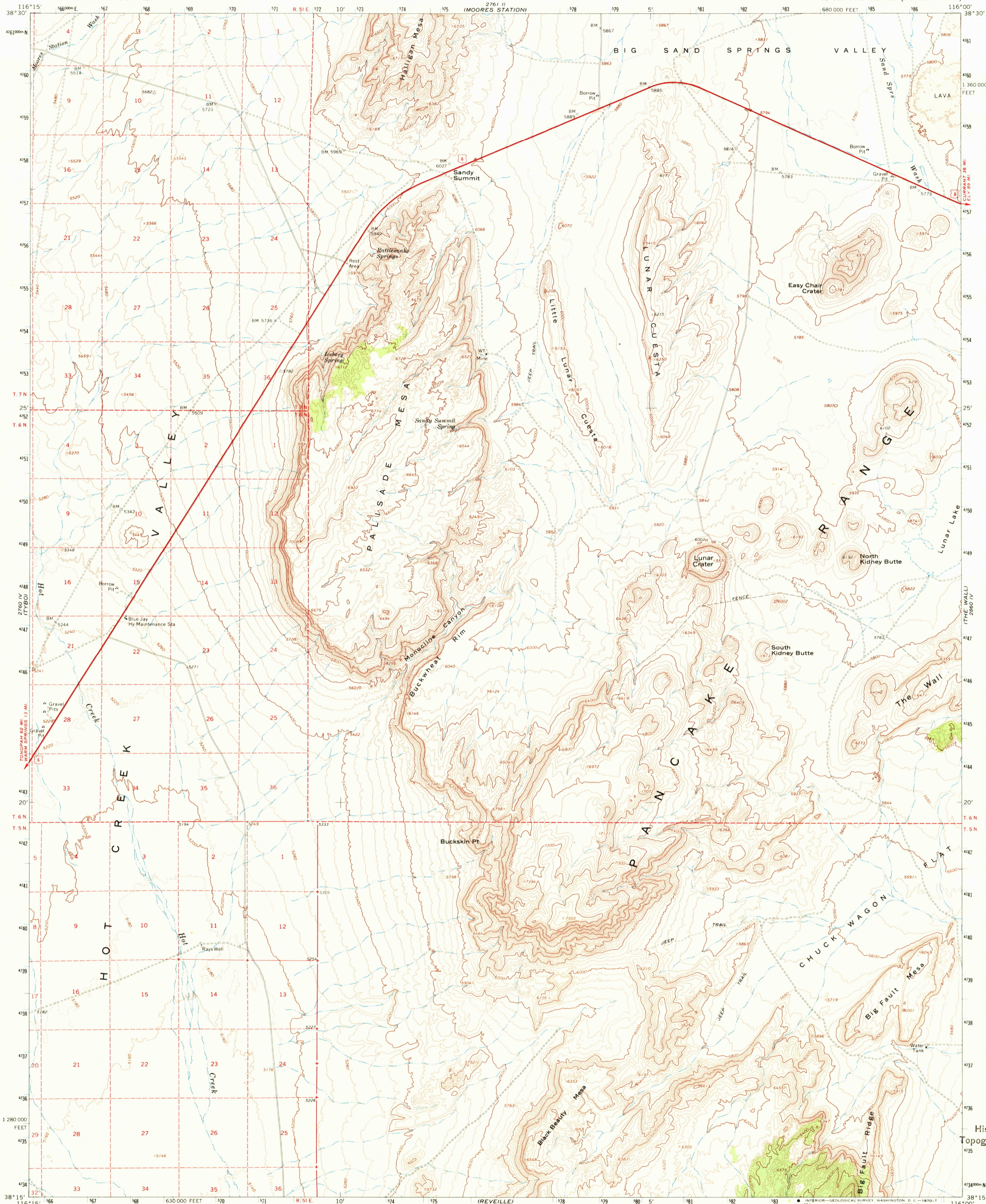


UNITED STATES  
DEPARTMENT OF THE INTERIOR  
GEOLOGICAL SURVEY

LUNAR CRATER QUADRANGLE  
NEVADA—NYE CO.  
15 MINUTE SERIES (TOPOGRAPHIC)



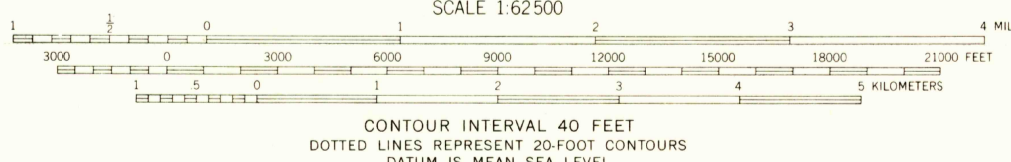
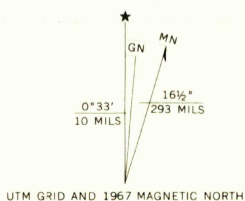
Mapped by the Atomic Energy Commission and the Geological Survey  
Edited and published by the Geological Survey

Control by USGS, USC&GS, and Atomic Energy Commission

Topography by photogrammetric methods from aerial photographs taken 1967. Field checked 1967

Polyconic projection. 1927 North American datum  
10,000-foot grid based on Nevada coordinate system, central zone  
1000-meter Universal Transverse Mercator grid ticks, zone 11, shown in blue

Where omitted, land lines have not been established



ROAD CLASSIFICATION

Primary highway, all weather, hard surface	Light-duty road, all weather, improved surface
Unimproved road, fair or dry weather	U. S. Route

U.S.G.S.  
FILE COPY  
TOPOGRAPHIC DIVISION

THIS MAP COMPLIES WITH NATIONAL MAP ACCURACY STANDARDS  
FOR SALE BY U. S. GEOLOGICAL SURVEY, DENVER, COLORADO 80225, OR WASHINGTON, D. C. 20242  
A FOLDER DESCRIBING TOPOGRAPHIC MAPS AND SYMBOLS IS AVAILABLE ON REQUEST

LUNAR CRATER, NEV.  
N3815—W11600/15

JUN 19 1970

1967  
AMS 2760 I—SERIES V796

USGS  
Historical File  
Topographic Division

2700