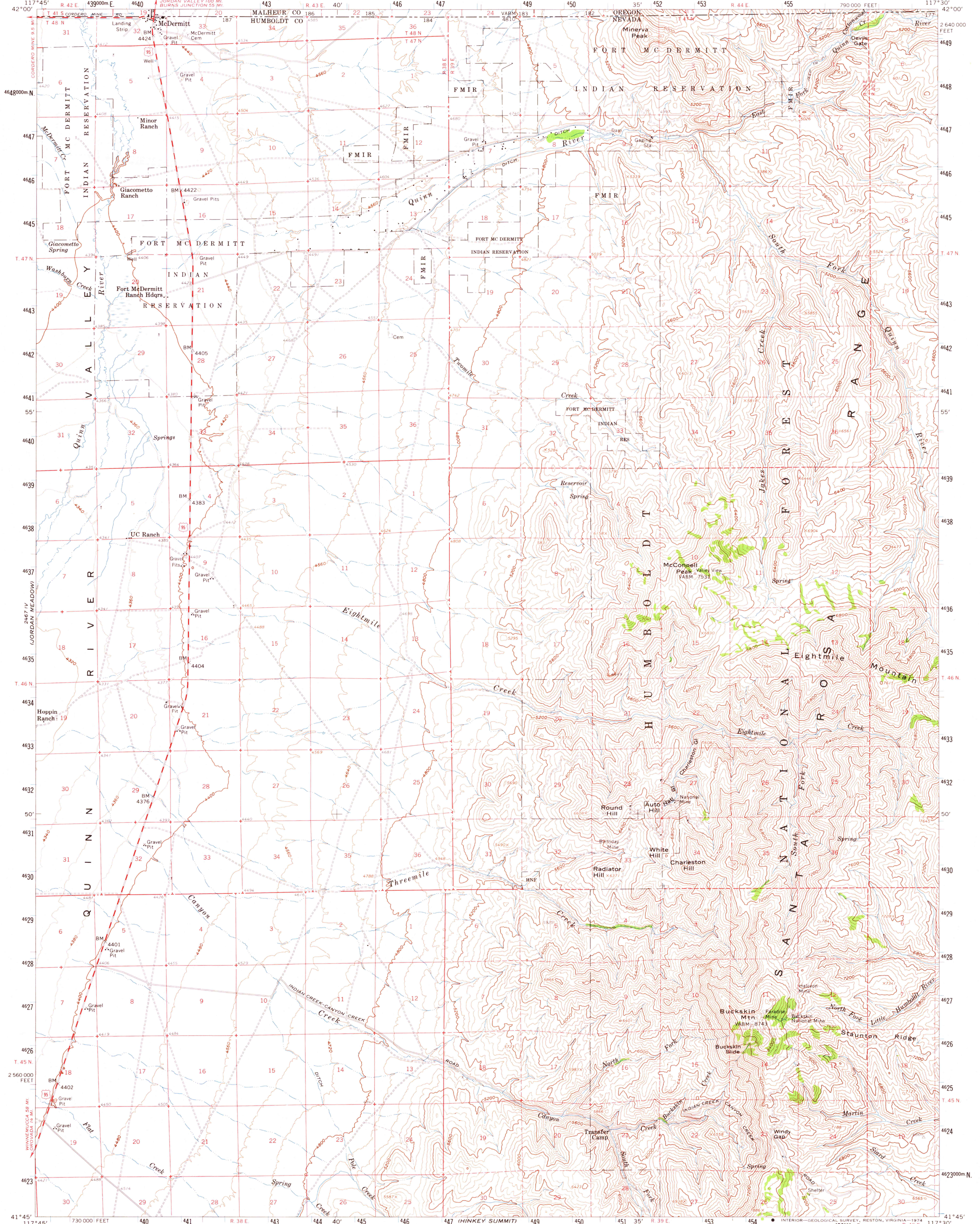
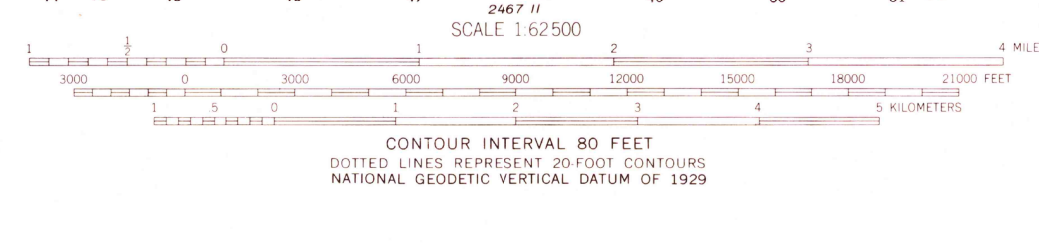


UNITED STATES
DEPARTMENT OF THE INTERIOR
GEOLOGICAL SURVEY

MC DERMITT QUADRANGLE
NEVADA—OREGON
15 MINUTE SERIES (TOPOGRAPHIC)



Maped, edited, and published by the Geological Survey
Control by USGS and USC&GS
Topography from aerial photographs by photogrammetric methods
and by plane-table surveys 1959. Aerial photographs taken 1957
Polyconic projection. 1927 North American datum
10,000-foot grid based on Nevada coordinate system, west zone
1000-meter Universal Transverse Mercator grid ticks,
zone 11, shown in blue
Dashed land lines indicate approximate locations



ROAD CLASSIFICATION
Medium-duty ——— Light-duty ———
Unimproved dirt
U.S. Route □