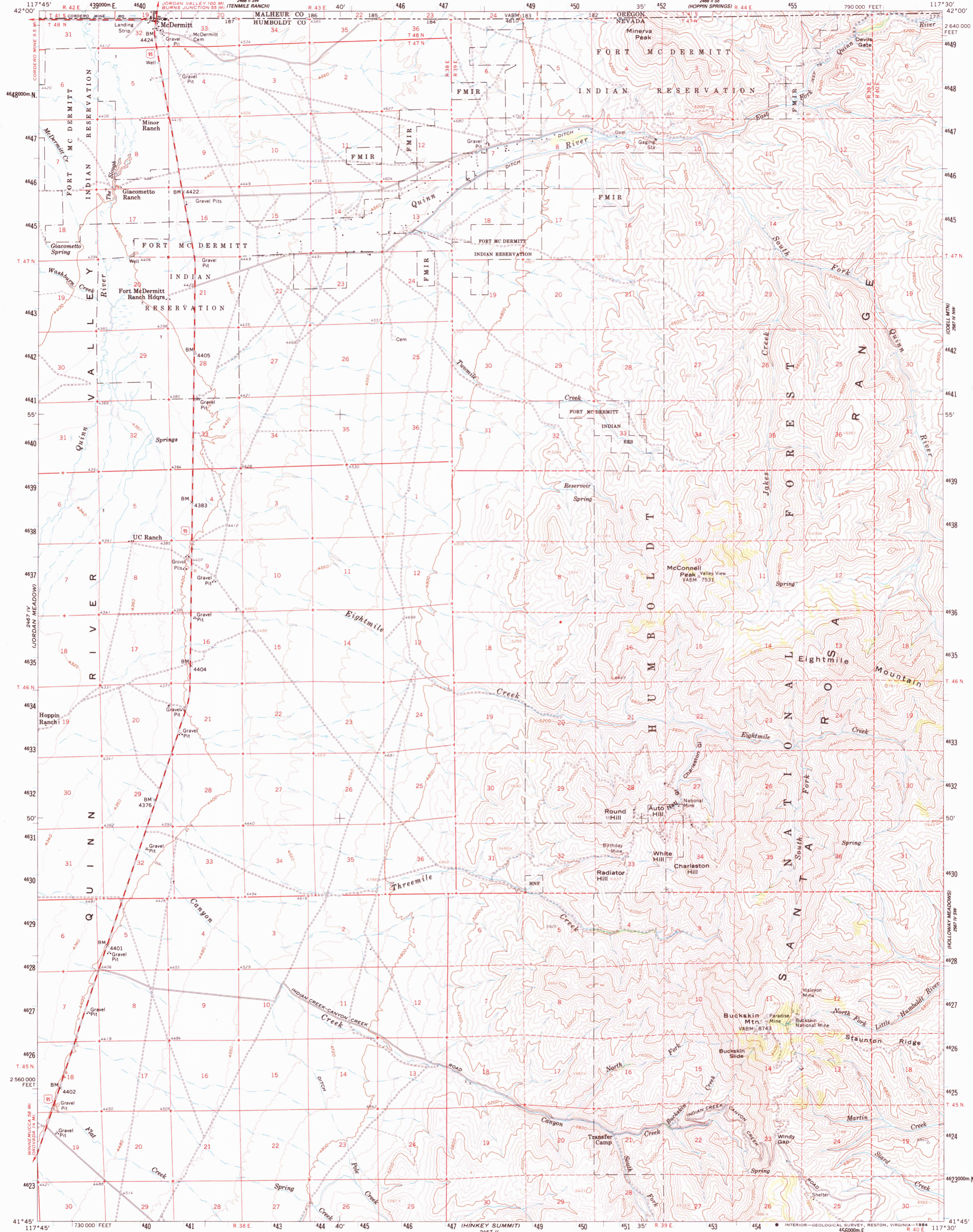
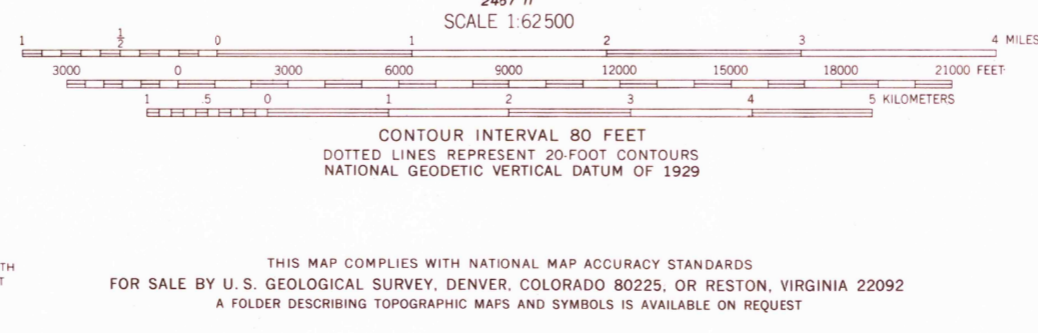


UNITED STATES
DEPARTMENT OF THE INTERIOR
GEOLOGICAL SURVEY

MC DERMITT QUADRANGLE
NEVADA—OREGON
15 MINUTE SERIES (TOPOGRAPHIC)



Mapped, edited, and published by the Geological Survey
Control by USGS and USC&GS
Topography from aerial photographs by photogrammetric methods
and by planetable surveys 1959. Aerial photographs taken 1957
Polyconic projection. 1927 North American datum
10,000-foot grid based on Nevada coordinate system, west zone
1000-meter Universal Transverse Mercator grid ticks,
zone 11, shown in blue
To place on the predicted North American Datum 1983
move the projection lines 15 meters north and
81 meters east
Dashed landlines indicate approximate locations
There may be private inholdings within the boundaries of
the National or State reservations shown on this map



ROAD CLASSIFICATION
Medium-duty ——— Light-duty ———
Unimproved dirt - - - - -
U.S. Route

NEVADA
QUADRANGLE LOCATION

MC DERMITT, NEV.—OREG.
N4145—W11730/15
1959
DMA 2467 I—SERIES V796

RETURN TO:
USGS MAP HISTORICAL MAP ARCHIVES