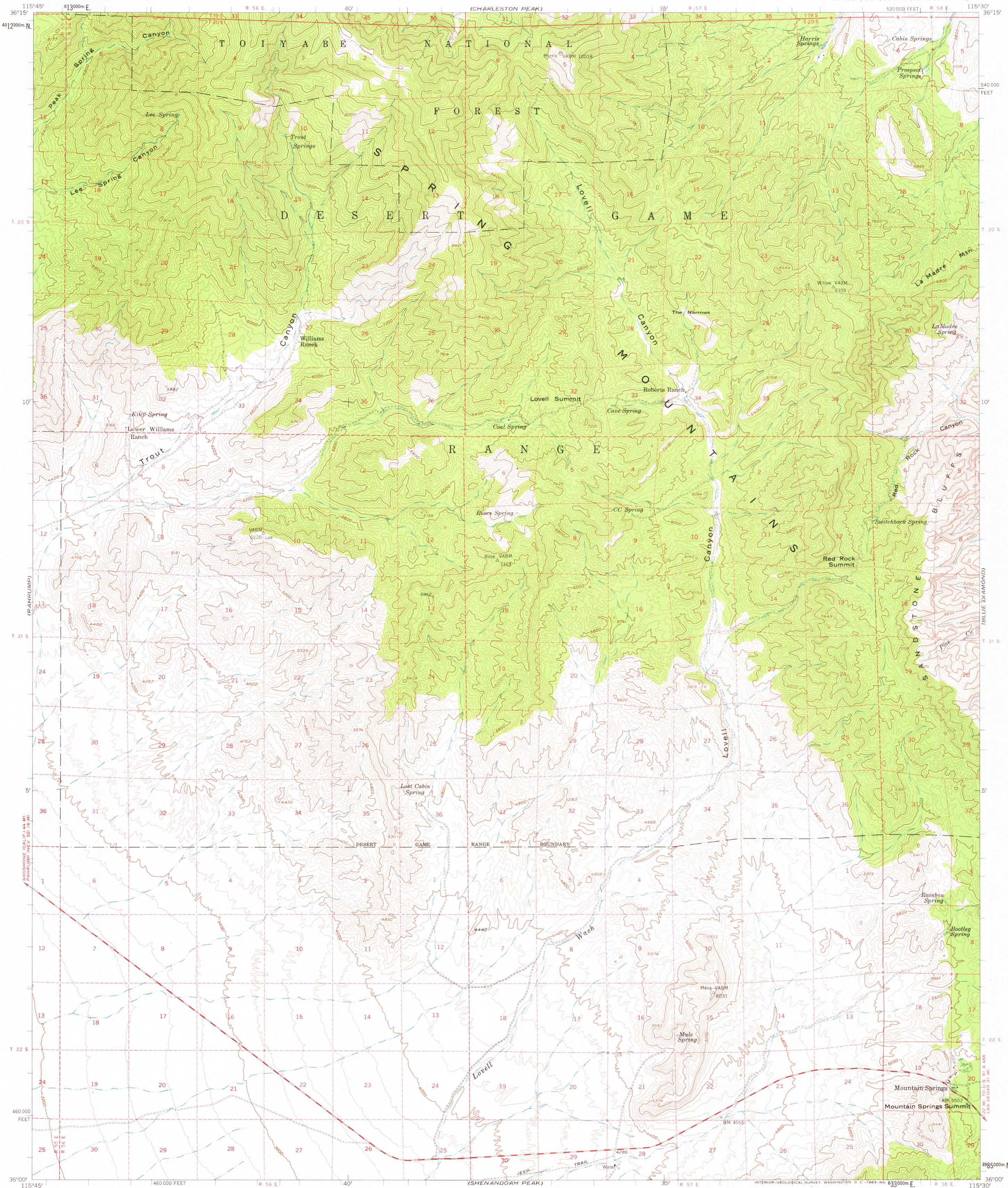


(MT. STERLING)

(CORN CREEK SPRINGS)

UNITED STATES  
DEPARTMENT OF THE INTERIOR  
GEOLOGICAL SURVEY

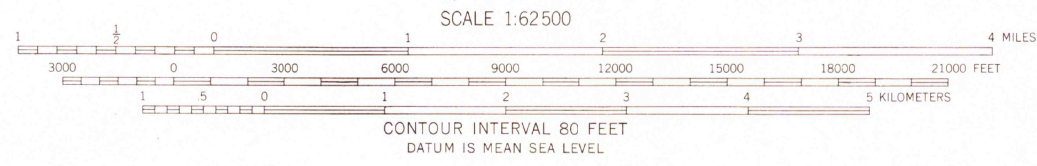
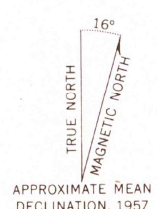
MOUNTAIN SPRINGS QUADRANGLE  
NEVADA—CLARK CO.  
15 MINUTE SERIES (TOPOGRAPHIC)



(HORSE THIEF SPRINGS)

(GOOD SPRINGS)

Mapped, edited, and published by the Geological Survey  
Control by USGS and USC&GS  
Topography from aerial photographs by multiplex methods  
Aerial photographs taken 1952 and 1953. Advance field check 1957  
Polyconic projection. 1927 North American datum  
10,000-foot grid based on Nevada coordinate system, east zone  
1000-meter Universal Transverse Mercator grid ticks,  
zone 11, shown in blue  
Dashed land lines indicate approximate locations  
Unchecked elevations are shown in brown



ROAD CLASSIFICATION  
Medium-duty ——— Light-duty ———  
Unimproved dirt - - - - -

USGS  
Historical File  
Topographic Division

NEVADA  
QUADRANGLE LOCATION

MOUNTAIN SPRINGS, NEV.  
N3600—W11530/15

THIS MAP COMPLIES WITH NATIONAL MAP ACCURACY STANDARDS  
FOR SALE BY U. S. GEOLOGICAL SURVEY, DENVER 25, COLORADO OR WASHINGTON 25, D. C.  
A FOLDER DESCRIBING TOPOGRAPHIC MAPS AND SYMBOLS IS AVAILABLE ON REQUEST

1957

OCT - 2 1980

1600