

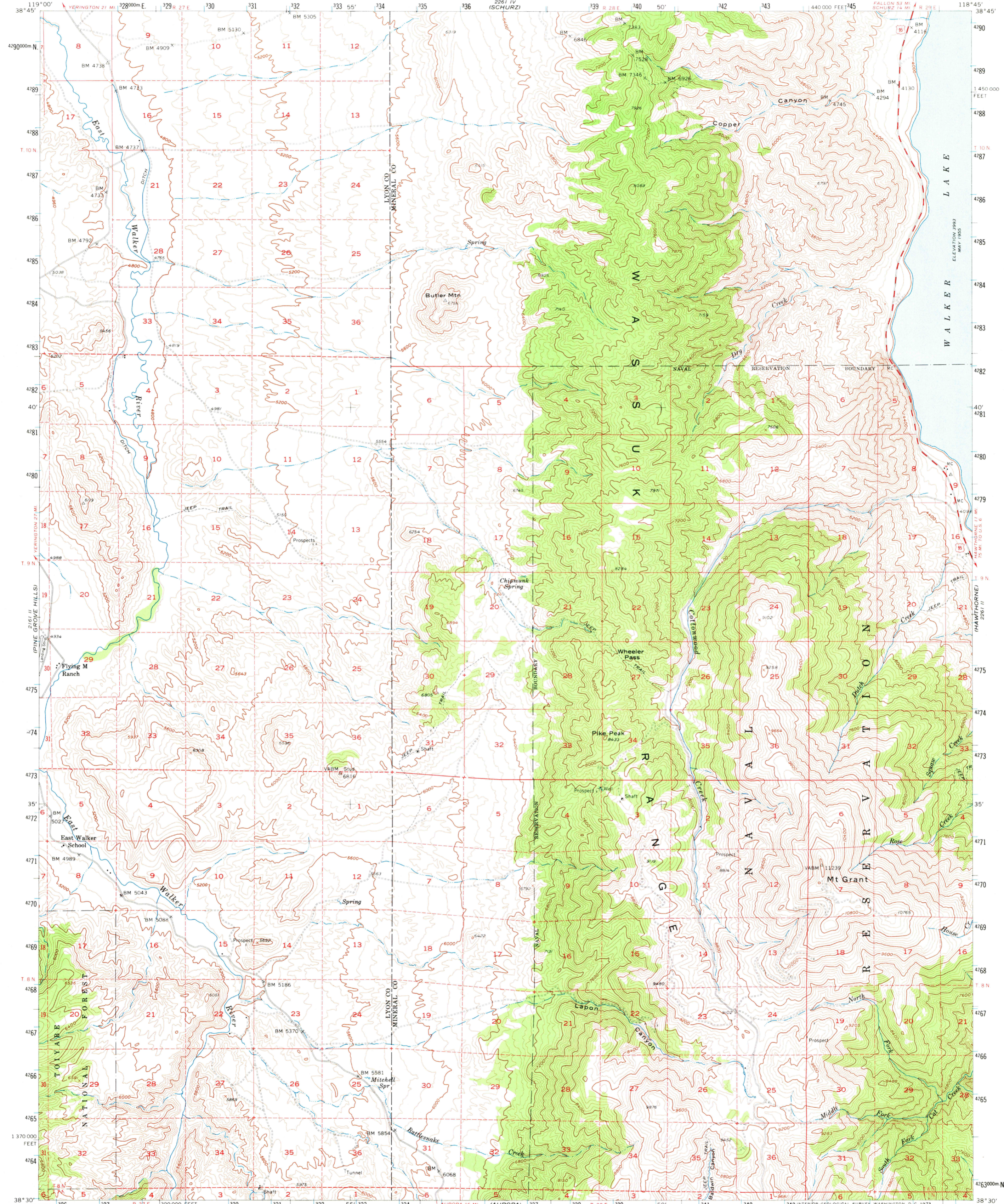
VERMILION
BRIDGEPORT

UNITED STATES
DEPARTMENT OF THE INTERIOR
GEOLOGICAL SURVEY

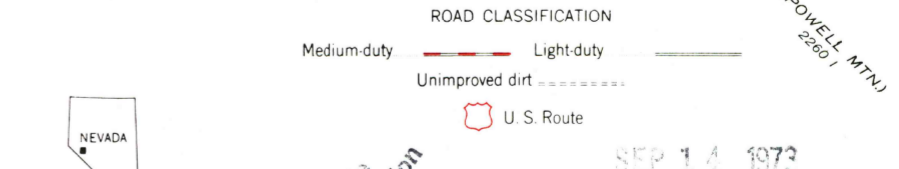
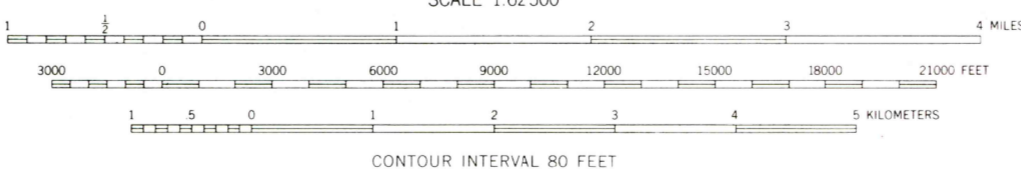
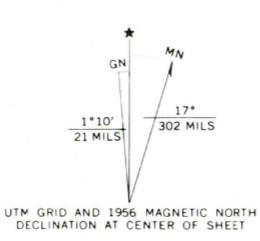
UNITED STATES
DEPARTMENT OF THE ARMY
CORPS OF ENGINEERS
2261 IV
(SCHURZ)

MT. GRANT QUADRANGLE
NEVADA
15 MINUTE SERIES (TOPOGRAPHIC)

GILLIS CANYON
ELEVATION 1985
MAY 1955



Mapped, edited, and published by the Geological Survey
Control by USGS and USC&GS
Topography from aerial photographs by multiplex methods
Aerial photographs taken 1954. Field check 1956
Polyconic projection. 1927 North American datum
10,000-foot grid based on Nevada coordinate system, west zone
1000-meter Universal Transverse Mercator grid ticks,
zone 11, shown in blue
Dashed land lines indicate approximate locations
Unchecked elevations are shown in brown



THIS MAP COMPLIES WITH NATIONAL MAP ACCURACY STANDARDS
FOR SALE BY U. S. GEOLOGICAL SURVEY, DENVER, COLORADO 80225 OR WASHINGTON, D. C. 20242
A FOLDER DESCRIBING TOPOGRAPHIC MAPS AND SYMBOLS IS AVAILABLE ON REQUEST

SEP 14 1972
MT. GRANT, NEV.
N3830-W11845/15
1956
AMS 2261 III-SERIES V796

3690