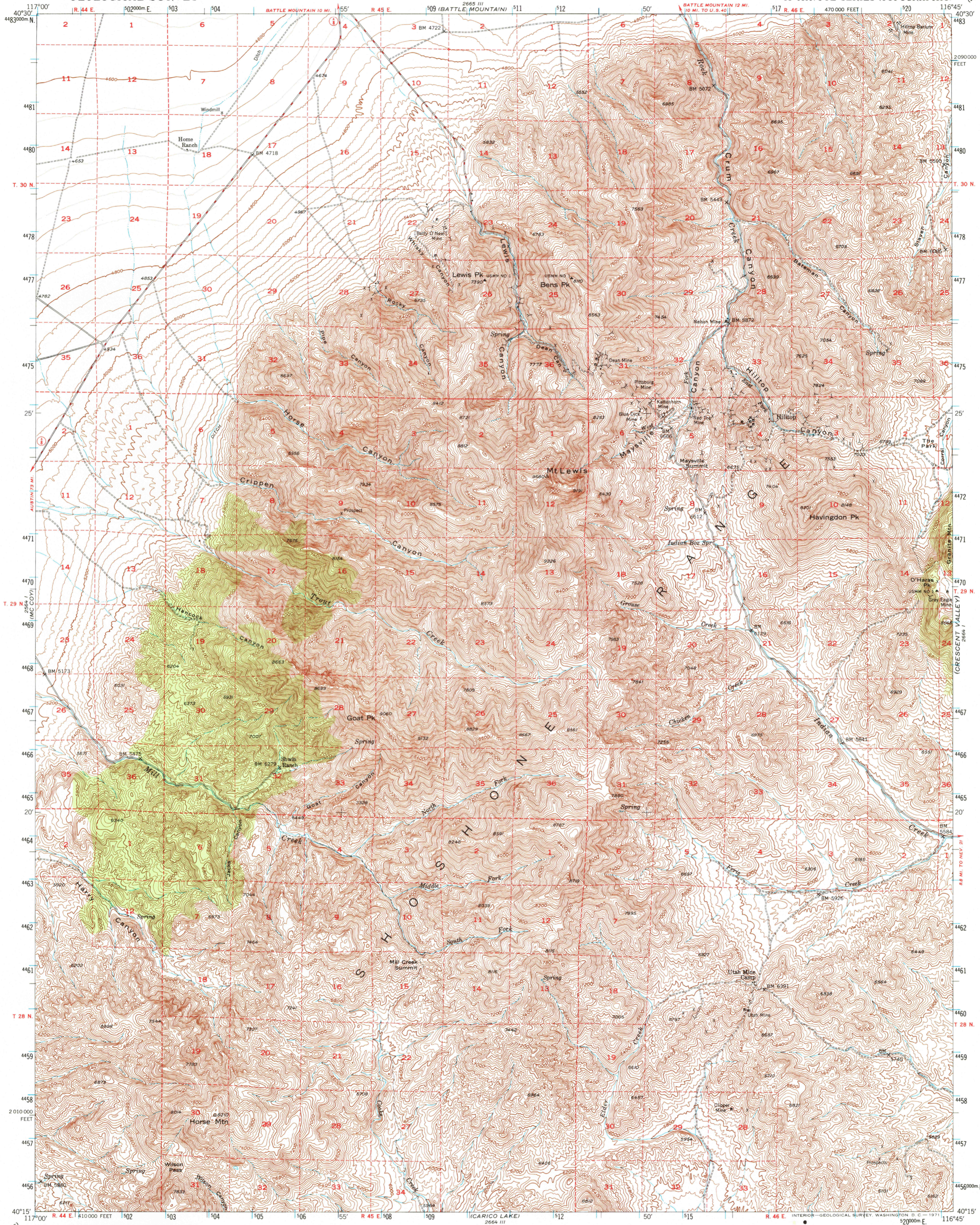


UNITED STATES  
DEPARTMENT OF THE INTERIOR  
GEOLOGICAL SURVEY

MT. LEWIS QUADRANGLE  
NEVADA-LANDER CO.  
15 MINUTE SERIES (TOPOGRAPHIC)

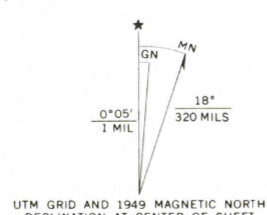


Mapped, edited, and published by the Geological Survey  
Control by USGS

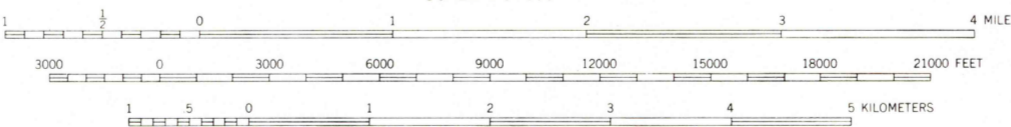
Topography from aerial photographs by multiplex methods,  
and by plane-table surveys 1949  
Aerial photographs taken 1946

Polyconic projection. 1927 North American datum  
10,000-foot grid based on Nevada coordinate system,  
central zone

Dashed land lines indicate approximate location  
Most of the mines on this map are inactive  
1000-meter Universal Transverse Mercator grid ticks,  
zone 11, shown in blue



UTM GRID AND 1949 MAGNETIC NORTH  
DECLINATION AT CENTER OF SHEET



SCALE 1:62 500

CONTOUR INTERVAL 40 FEET  
DATUM IS MEAN SEA LEVEL

ROAD CLASSIFICATION

HARD SURFACE ALL WEATHER ROADS DRY WEATHER ROADS  
Heavy-duty Improved dirt  
Medium-duty Unimproved dirt  
Loose-surface, graded, or narrow hard-surface

U. S. Route State Route

MT. LEWIS, NEV.  
N4015-W11645/15

1949

AMS 2664 IV-SERIES V796

THIS MAP COMPLIES WITH NATIONAL MAP ACCURACY STANDARDS  
FOR SALE BY U. S. GEOLOGICAL SURVEY, DENVER, COLORADO 80225 OR WASHINGTON, D. C. 20242  
A FOLDER DESCRIBING TOPOGRAPHIC MAPS AND SYMBOLS IS AVAILABLE ON REQUEST