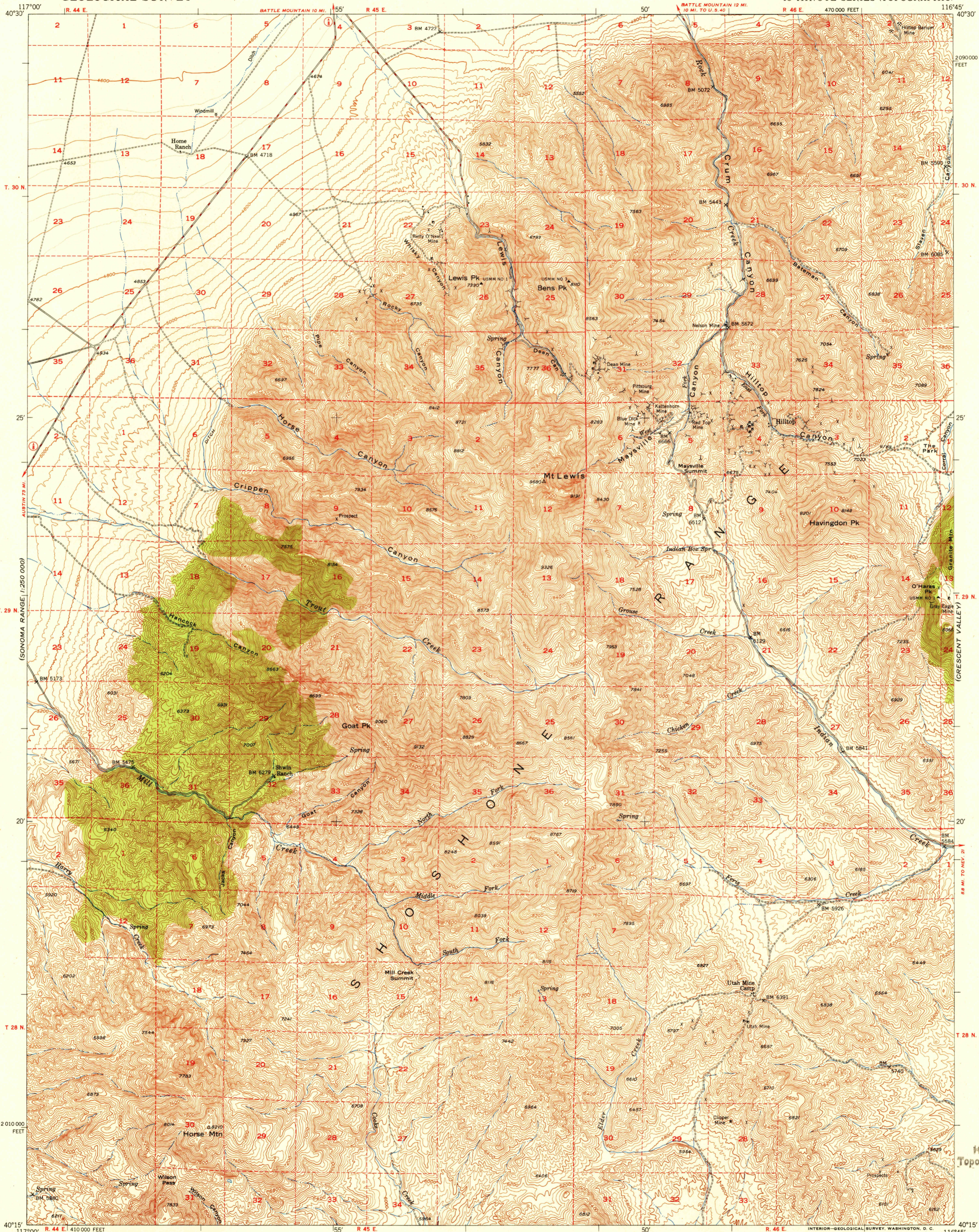


(ANTLER PEAK)

UNITED STATES DEPARTMENT OF THE INTERIOR GEOLOGICAL SURVEY

U.S.G.S. FILE COPY Inspection and Printing

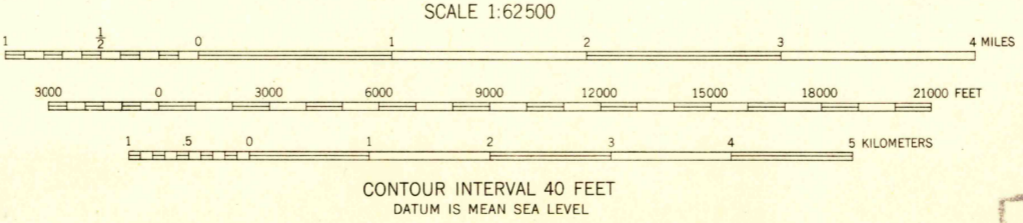
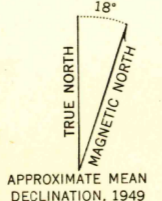
MT LEWIS QUADRANGLE NEVADA-LANDER CO. 15 MINUTE SERIES (TOPOGRAPHIC)



USGS Historical File Topographic Division

(SONOMA RANGE) 1:250,000

Mapped, edited, and published by the Geological Survey Control by USGS Topography from aerial photographs by multiplex methods, and by plane-table surveys 1949 Aerial photographs taken 1946 Polycyclic projection, 1927 North American datum 10,000-foot grid based on Nevada coordinate system, central zone Dashed land lines indicate approximate location Most of the mines on this map are inactive



ROAD CLASSIFICATION table with columns for road types and symbols.

HARD-SURFACE ALL WEATHER ROADS	DRY WEATHER ROADS
Heavy-duty LANE LANE	Improved dirt
Medium-duty LANE LANE	Unimproved dirt
Loose-surface, graded, or narrow hard-surface	
U. S. Route	State Route

U.S.G.S. FILE COPY Inspection and Printing

MT LEWIS, NEV. N4015-W11645/15 EDITION OF 1950

THIS MAP COMPLIES WITH NATIONAL MAP ACCURACY STANDARDS FOR SALE BY U. S. GEOLOGICAL SURVEY, FEDERAL CENTER, DENVER, COLORADO OR WASHINGTON 25, D. C. A FOLDER DESCRIBING TOPOGRAPHIC MAPS AND SYMBOLS IS AVAILABLE ON REQUEST

NOV 24 1950 2180