

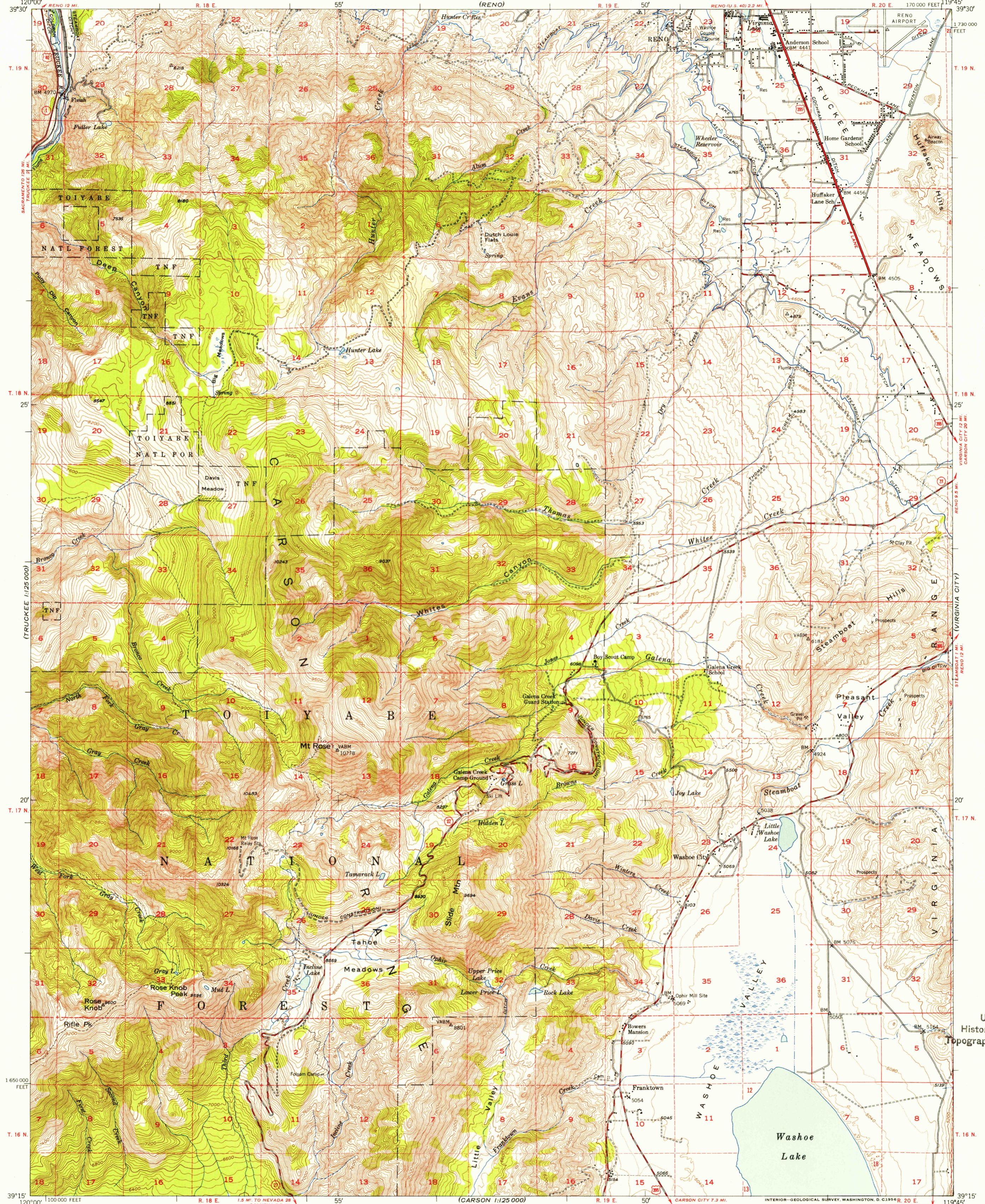
(SIERRAVILLE 1:25,000)

U.S.G.S.  
FILE COPY  
TOPOGRAPHIC DIVISION

MT. ROSE QUADRANGLE  
NEVADA-WASHOE CO.  
15 MINUTE SERIES (TOPOGRAPHIC)

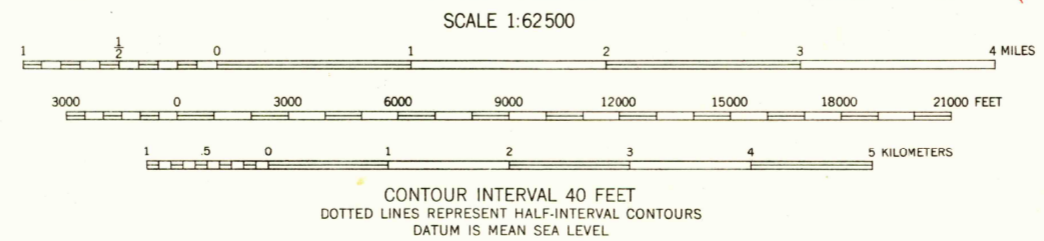
(RENO 1:25,000)

UNITED STATES  
DEPARTMENT OF THE INTERIOR  
GEOLOGICAL SURVEY



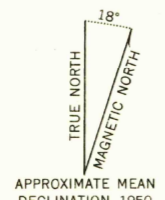
USGS  
Historical File  
Topographic Division

Mapped, edited, and published by the Geological Survey  
Control by USGS and USC&GS  
Topography from aerial photographs by multiplex methods  
Aerial photographs taken 1948. Field check 1950  
Polyconic projection. 1927 North American datum  
10,000-foot grid based on Nevada coordinate system,  
west zone  
Dashed land lines indicate approximate location  
Unchecked elevations are shown in brown



ROAD CLASSIFICATION

Heavy-duty	4 LANE 6 LANE	Light-duty	2 LANE 4 LANE
Medium-duty	4 LANE 6 LANE	Unimproved dirt	-----
U. S. Route	○	State Route	○



THIS MAP COMPLIES WITH NATIONAL MAP ACCURACY STANDARDS  
FOR SALE BY U. S. GEOLOGICAL SURVEY, FEDERAL CENTER, DENVER, COLORADO OR WASHINGTON 25, D. C.  
A FOLDER DESCRIBING TOPOGRAPHIC MAPS AND SYMBOLS IS AVAILABLE ON REQUEST

U.S.G.S.  
FILE COPY  
TOPOGRAPHIC DIVISION

MT. ROSE, NEV.  
N3915-W11945/15  
1950

MAR 20 1956

6280