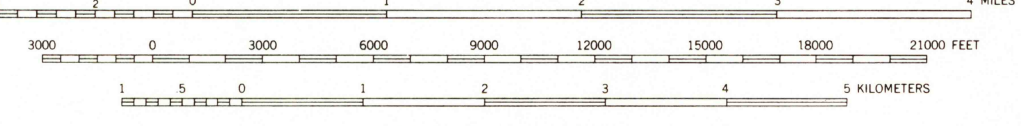
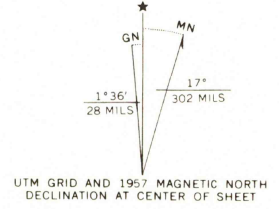


Mapped, edited, and published by the Geological Survey
Control by USGS and USC&GS
Topography from aerial photographs by multiplex methods and
by plane-table surveys 1957. Aerial photographs taken 1954.
Polyconic projection. 1927 North American datum.
10,000-foot grids based on Nevada coordinate system, west zone
and California coordinate system, zone 2.
1000-meter Universal Transverse Mercator grid ticks,
zone 11, shown in blue.
Dashed land lines indicate approximate locations.
Unchecked elevations are shown in brown.



CONTOUR INTERVAL 40 FEET
DATUM IS MEAN SEA LEVEL

THIS MAP COMPLIES WITH NATIONAL MAP ACCURACY STANDARDS
FOR SALE BY U. S. GEOLOGICAL SURVEY, DENVER, COLORADO 80225 OR WASHINGTON, D. C. 20242
A FOLDER DESCRIBING TOPOGRAPHIC MAPS AND SYMBOLS IS AVAILABLE ON REQUEST



ROAD CLASSIFICATION
Heavy-duty ——— Light-duty ———
Unimproved dirt - - - - -
U. S. Route ———

MT. SIEGEL, NEV.—CALIF.
N3845—W11930/15

1957
AMS 2061 I—SERIES V796