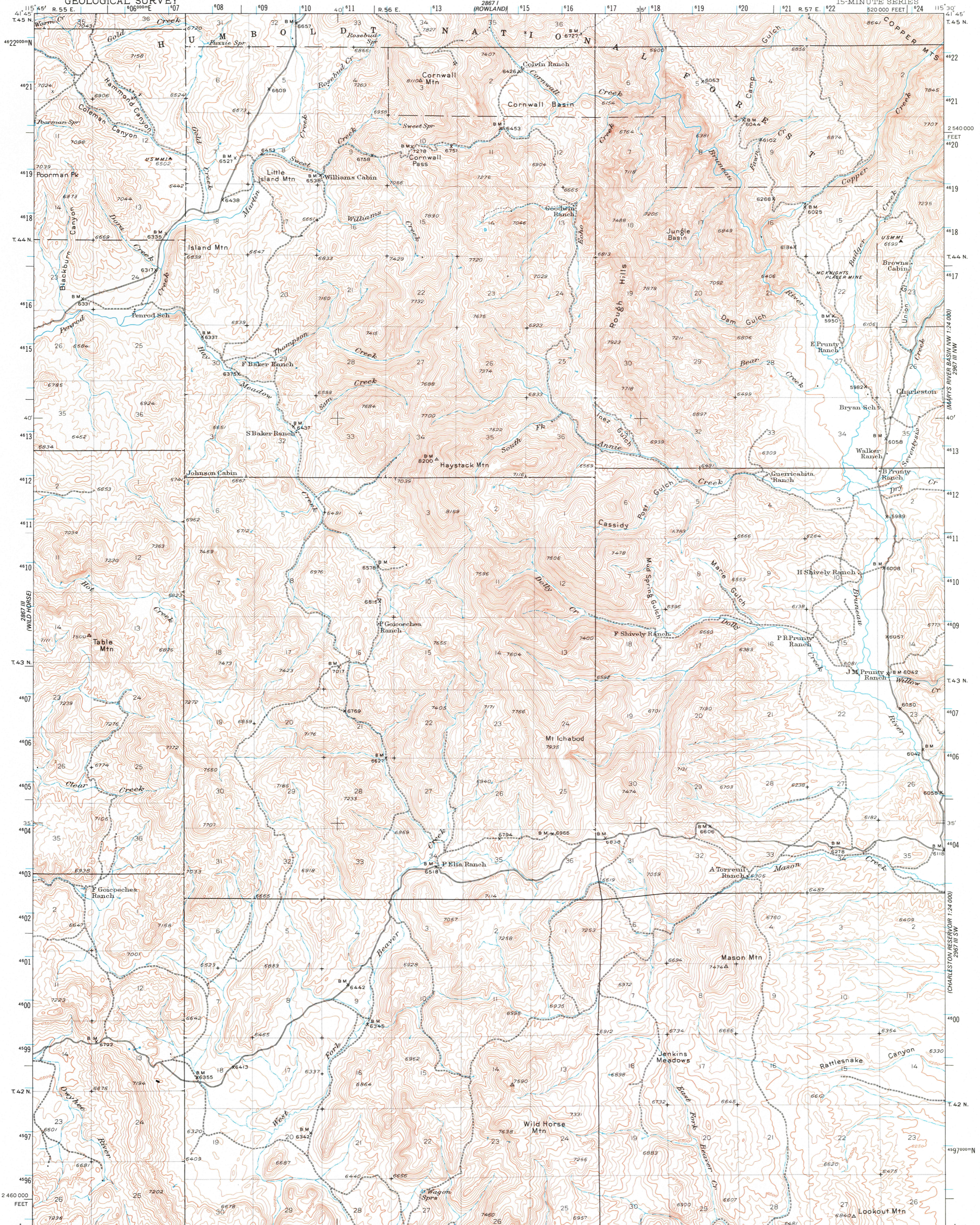


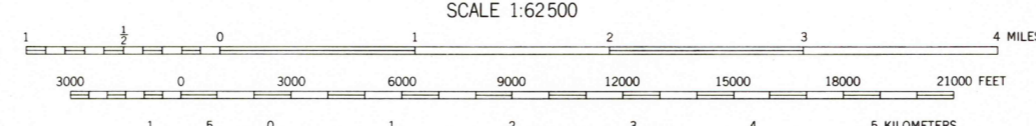
UNITED STATES
DEPARTMENT OF THE INTERIOR
GEOLOGICAL SURVEY

NEVADA
(ELKO COUNTY)
MT. VELMA QUADRANGLE
15-MINUTE SERIES
520 000 FEET



Topography by R.R. Monbeck, G.A. Fischer, F.H. Woody,
L.A. Stewart, G.B. Weston, N.I. Campbell, and F.V. Schneider
Surveyed in 1934 and 1935

ROAD CLASSIFICATION
Light-duty ————
Unimproved dirt - - - - -



CONTOUR INTERVAL 50 FEET
NATIONAL GEODETIC VERTICAL DATUM OF 1929

FOR SALE BY U.S. GEOLOGICAL SURVEY, DENVER, COLORADO 80225, OR RESTON, VIRGINIA 22092
A FOLDER DESCRIBING TOPOGRAPHIC MAPS AND SYMBOLS IS AVAILABLE ON REQUEST

Polycomic projection. 1927 North American datum
10,000-foot grid based on Nevada (East)
rectangular coordinate system
1000-meter Universal Transverse Mercator grid ticks,
zone 11, shown in blue



MT. VELMA, NEV.
N4130-W11530/15
1935

USGS
Historical File
Topographic Division

AMS 2867 II-SERIES V796

DEC 21 1977

2700