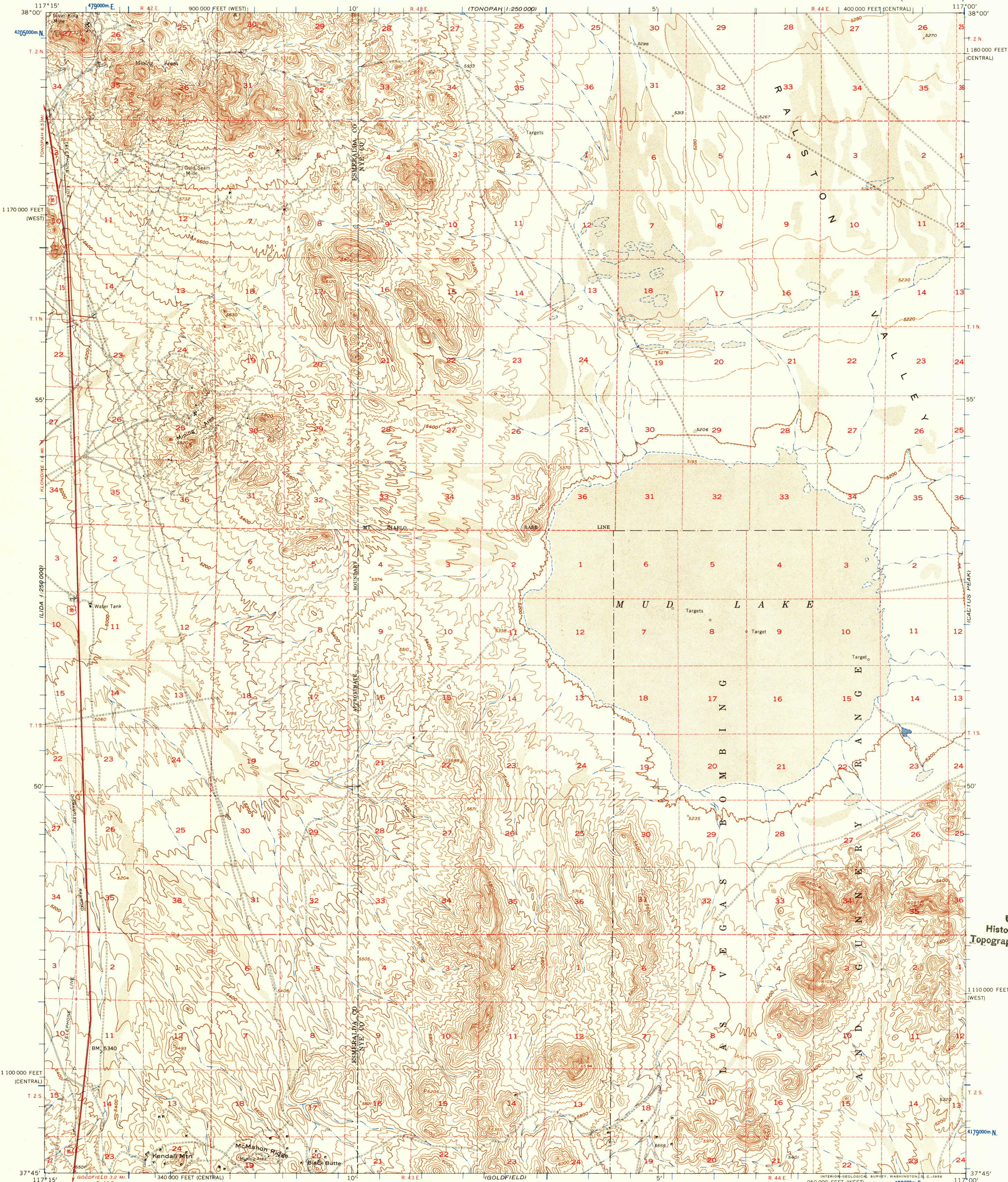


(TONOPAH)
1:250,000

UNITED STATES
DEPARTMENT OF THE INTERIOR
GEOLOGICAL SURVEY

UNITED STATES
DEPARTMENT OF THE ARMY
CORPS OF ENGINEERS

MUD LAKE QUADRANGLE
NEVADA
15 MINUTE SERIES (TOPOGRAPHIC)



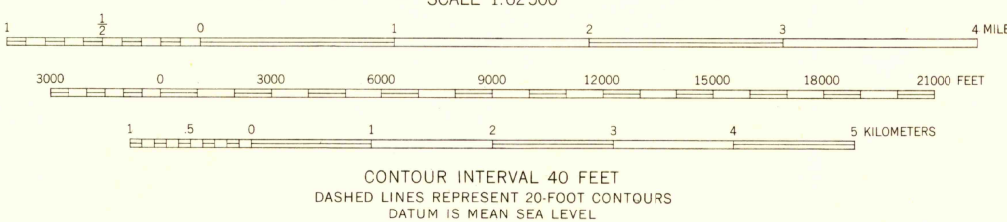
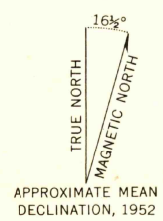
Mapped by the Army Map Service
Published for civil use by the Geological Survey
Control by USC&GS and USCE

Topography from aerial photographs by photogrammetric methods
Aerial photographs taken 1952. Field check 1952

Polyconic projection. 1927 North American datum
10,000-foot grid based on Nevada coordinate system,
central and west zones

1000-meter Universal Transverse Mercator grid ticks,
zone 11, shown in blue

Dashed land lines indicate approximate locations
Unchecked elevations are shown in brown



ROAD CLASSIFICATION

Heavy-duty ——— Light-duty ———
Unimproved dirt - - - - - U.S. Route

U.S.G.S.
FILE COPY
TOPOGRAPHIC DIVISION

MUD LAKE, NEV.
N3745—W11700/15
1952

FOR SALE BY U. S. GEOLOGICAL SURVEY, DENVER 2, COLORADO OR WASHINGTON 25, D. C.
A FOLDER DESCRIBING TOPOGRAPHIC MAPS AND SYMBOLS IS AVAILABLE ON REQUEST

USGS
Historical File
Topographic Division

MAY - 7 1958
1950