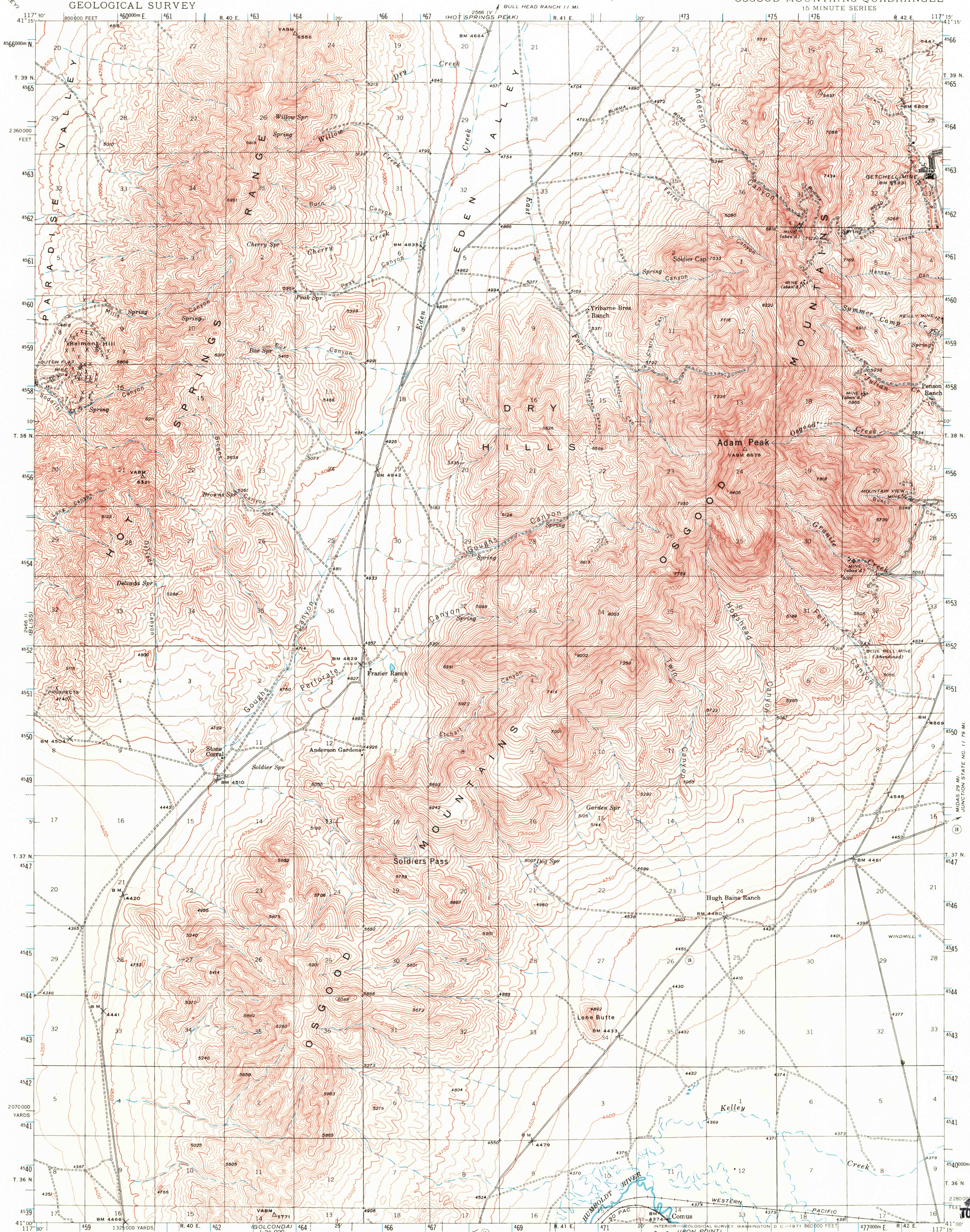


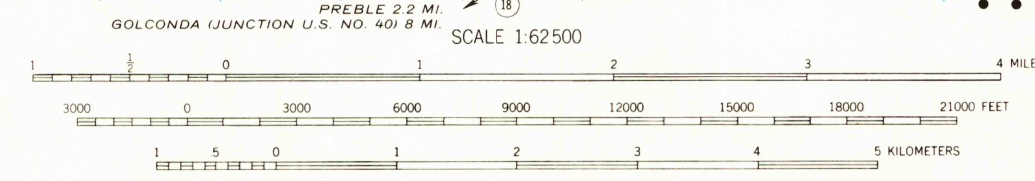
UNITED STATES
DEPARTMENT OF THE INTERIOR
GEOLOGICAL SURVEY

NEVADA
(HUMBOLDT COUNTY)
OSGOD MOUNTAINS QUADRANGLE
15 MINUTE SERIES



Mapped by the Geological Survey
1945

ROAD CLASSIFICATION
Light-duty ——— Unimproved dirt - - - - -
○ State Route



Contour interval 50 feet
Datum is mean sea level

OSGOD MOUNTAINS, NEV.

N4100—W11715/15

1945

AMS 2566 III—SERIES V796

FOR SALE BY U. S. GEOLOGICAL SURVEY, DENVER, COLORADO 80225 OR WASHINGTON, D. C. 20242
A FOLDER DESCRIBING TOPOGRAPHIC MAPS AND SYMBOLS IS AVAILABLE ON REQUEST

USGS
HISTORICAL FILE
TOPOGRAPHIC DIVISION

DEC 1 1971