

Topography by R. C. Seitz and F. H. Purdy  
Surveyed in 1938-1939

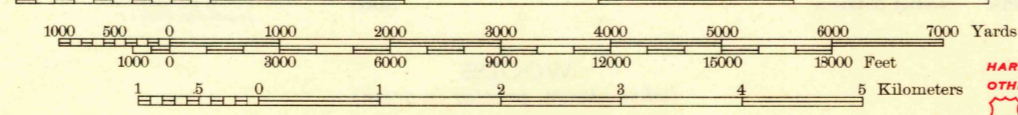
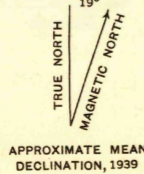
WHITE ROCK 4 MI.  
ELKO (JUNC. U. S. ROUTE NO. 40) 87 MI.

Scale 1/62500

Land lines omitted in T. 45 N., R. 51 E.  
as topography and land plats cannot be  
reconciled.

Polycyclic projection. 1927 North American datum  
5000 yard grid based on U. S. zone system, F  
10000 foot grid based on Nevada (East)  
rectangular coordinate system

USGS Library  
Reston, VA.  
Topo Archive



Contour interval 50 feet  
Datum is mean sea level

ROUTES USUALLY TRAVELED  
HARD IMPERVIOUS SURFACES  
OTHER SURFACE IMPROVEMENTS  
U. S. ROUTE 1942 STATE ROUTE

OWYHEE, NEV.-IDAHO  
N4145-W11600/15  
Edition of 1942

Reel College Libraries  
1101 Wisconsin St.