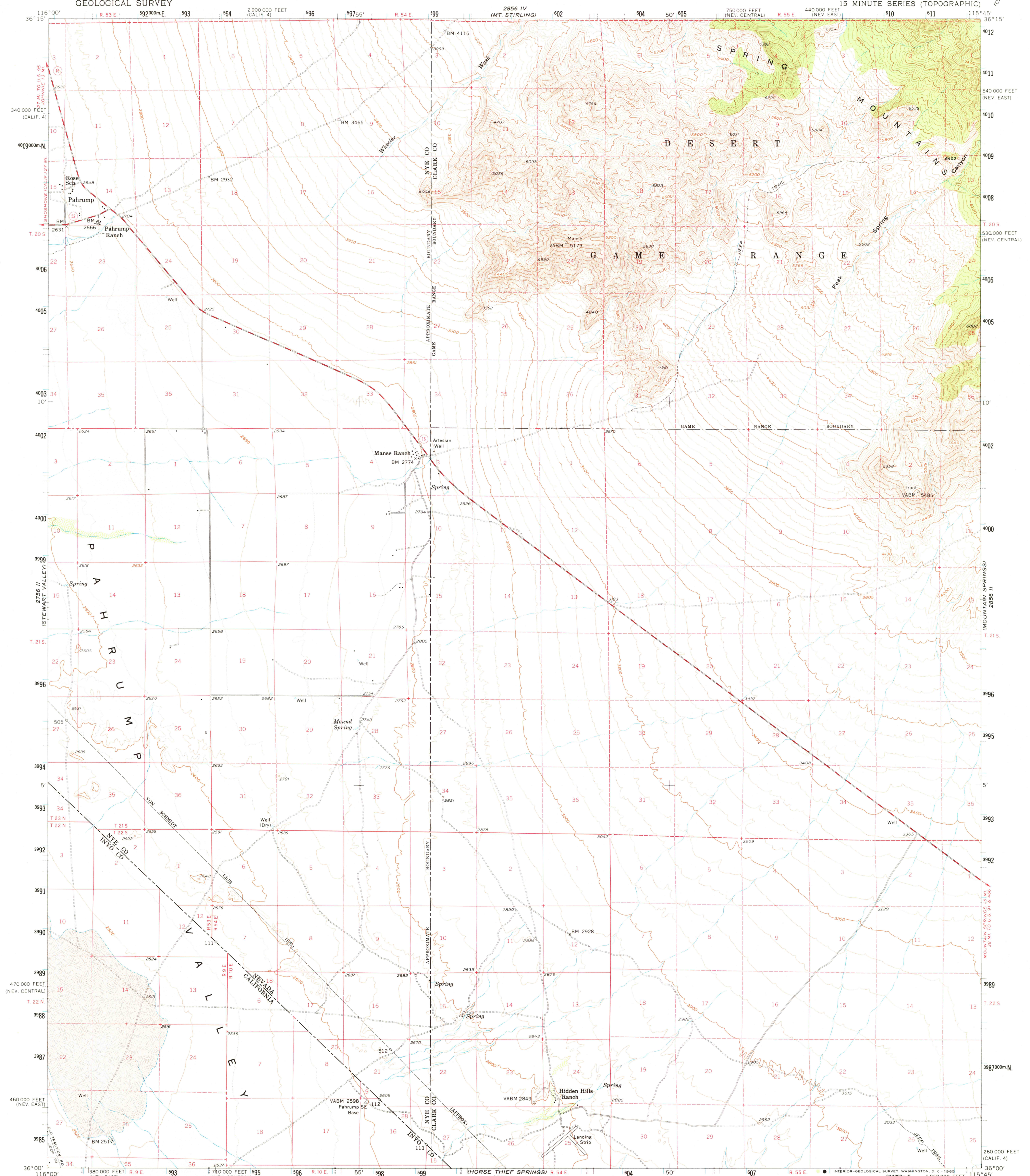
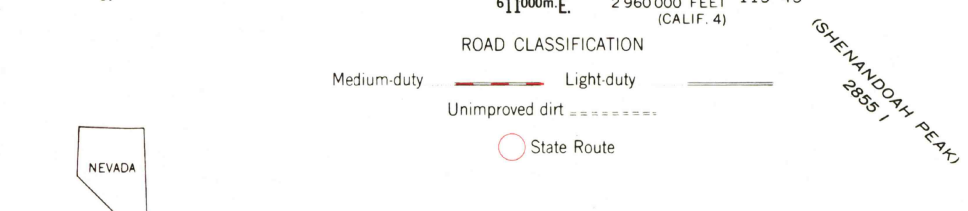
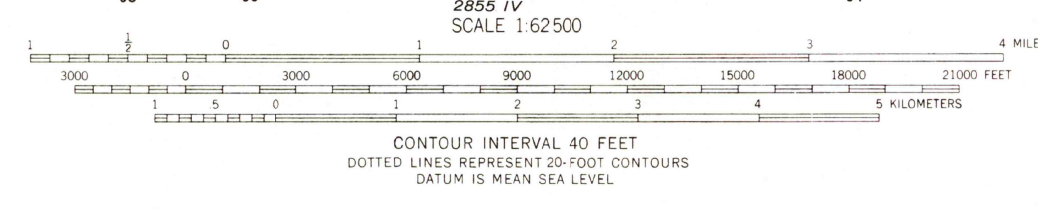
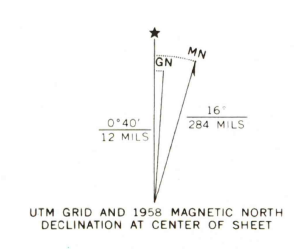


2856 I  
(CHARLESTON PEAK)

2856 I  
(SHENANDOAH PEAK)



Mapped, edited, and published by the Geological Survey  
Control by USGS and USC&GS  
Topography from aerial photographs by Kelsh plotter and by  
planetable surveys 1958. Aerial photographs taken 1952-1953  
Polyconic projection. 1927 North American datum  
10,000-foot grids based on Nevada coordinate system, east and  
central zones and California coordinate system, zone 4  
1000-meter Universal Transverse Mercator grid ticks,  
zone 11, shown in blue  
Dashed land lines indicate approximate locations  
Unchecked elevations are shown in brown



THIS MAP COMPLIES WITH NATIONAL MAP ACCURACY STANDARDS  
FOR SALE BY U. S. GEOLOGICAL SURVEY, DENVER 25, COLORADO OR WASHINGTON 25, D. C.  
A FOLDER DESCRIBING TOPOGRAPHIC MAPS AND SYMBOLS IS AVAILABLE ON REQUEST

PAHRUMP, NEV.-CALIF.  
N3600-W11545/15  
1958  
AMS 2856 III-SERIES V796