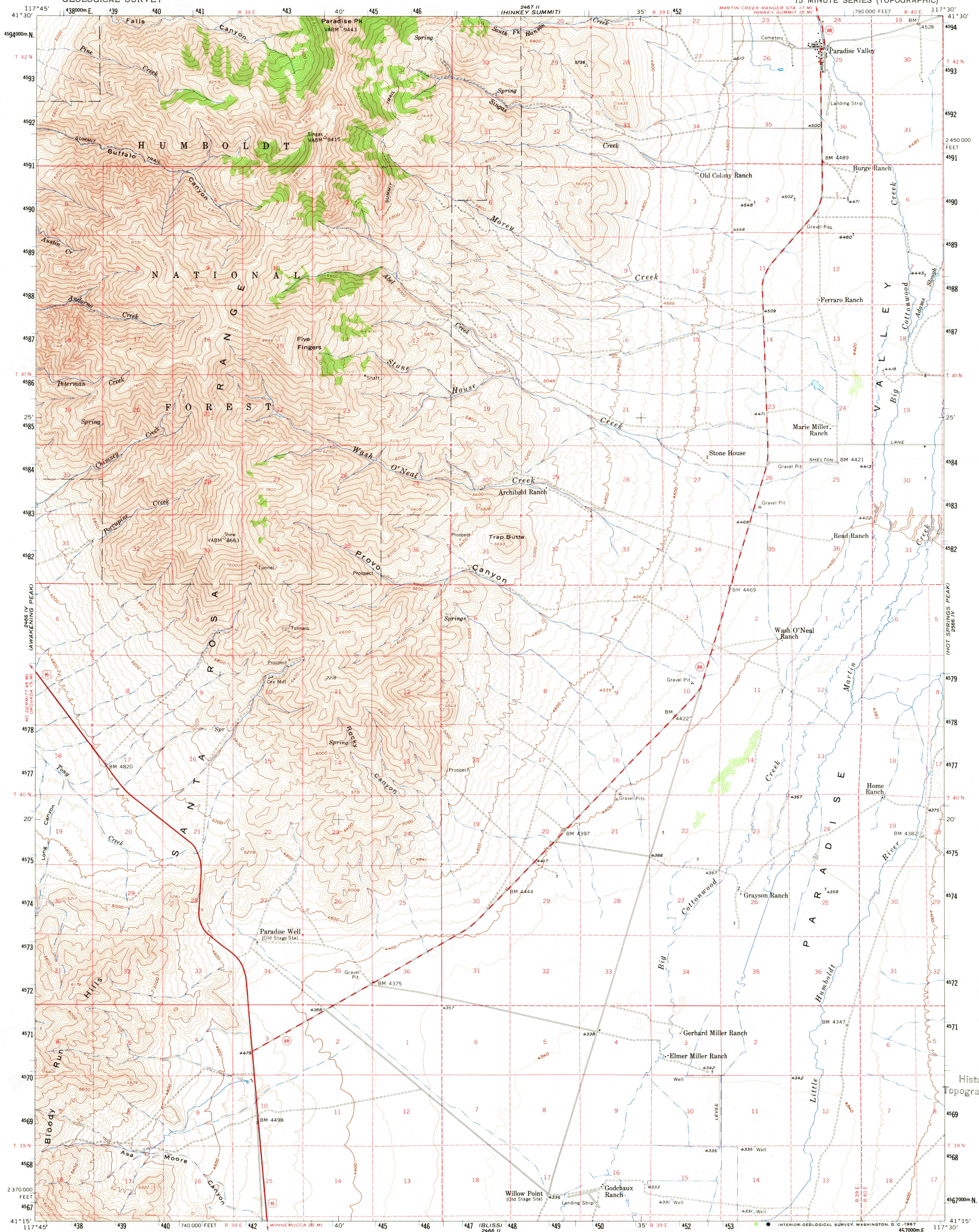


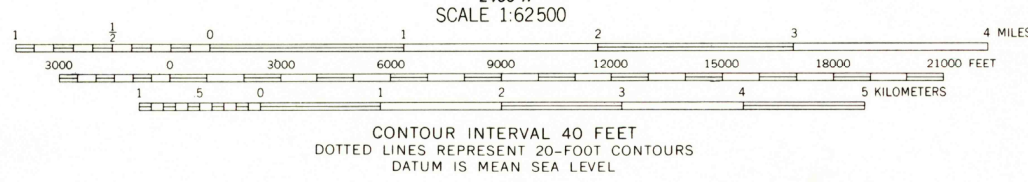
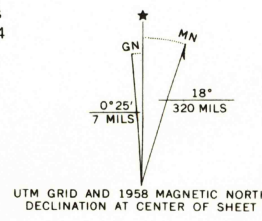
2466 IV  
(HUMBOLDT)

UNITED STATES  
DEPARTMENT OF THE INTERIOR  
GEOLOGICAL SURVEY

PARADISE VALLEY QUADRANGLE  
NEVADA—HUMBOLDT CO.  
15 MINUTE SERIES (TOPOGRAPHIC)



Mapped, edited, and published by the Geological Survey  
Control by USGS and USC&GS  
Topography from aerial photographs by photogrammetric methods  
and by planetable surveys 1958. Aerial photographs taken 1954  
Polyconic projection. 1927 North American datum  
10,000-foot grid based on Nevada coordinate system, west zone  
1000-meter Universal Transverse Mercator grid ticks,  
zone 11, shown in blue  
Land lines unsurveyed in T. 42 N.—R. 38 E.  
Dashed land lines indicate approximate locations  
Unchecked elevations are shown in brown



ROAD CLASSIFICATION  
Heavy-duty ——— Light-duty ———  
Medium-duty ——— Unimproved dirt ———  
U. S. Route ——— State Route ———

PARADISE VALLEY, NEV.  
N4115—W11730/15

USGS Library  
Reston, VA.  
Topo Archive

1958  
AMS 2466 I—SERIES V796

U.S.G.S.  
FILE COPY  
TOPOGRAPHIC DIVISION

JUL 21 1967