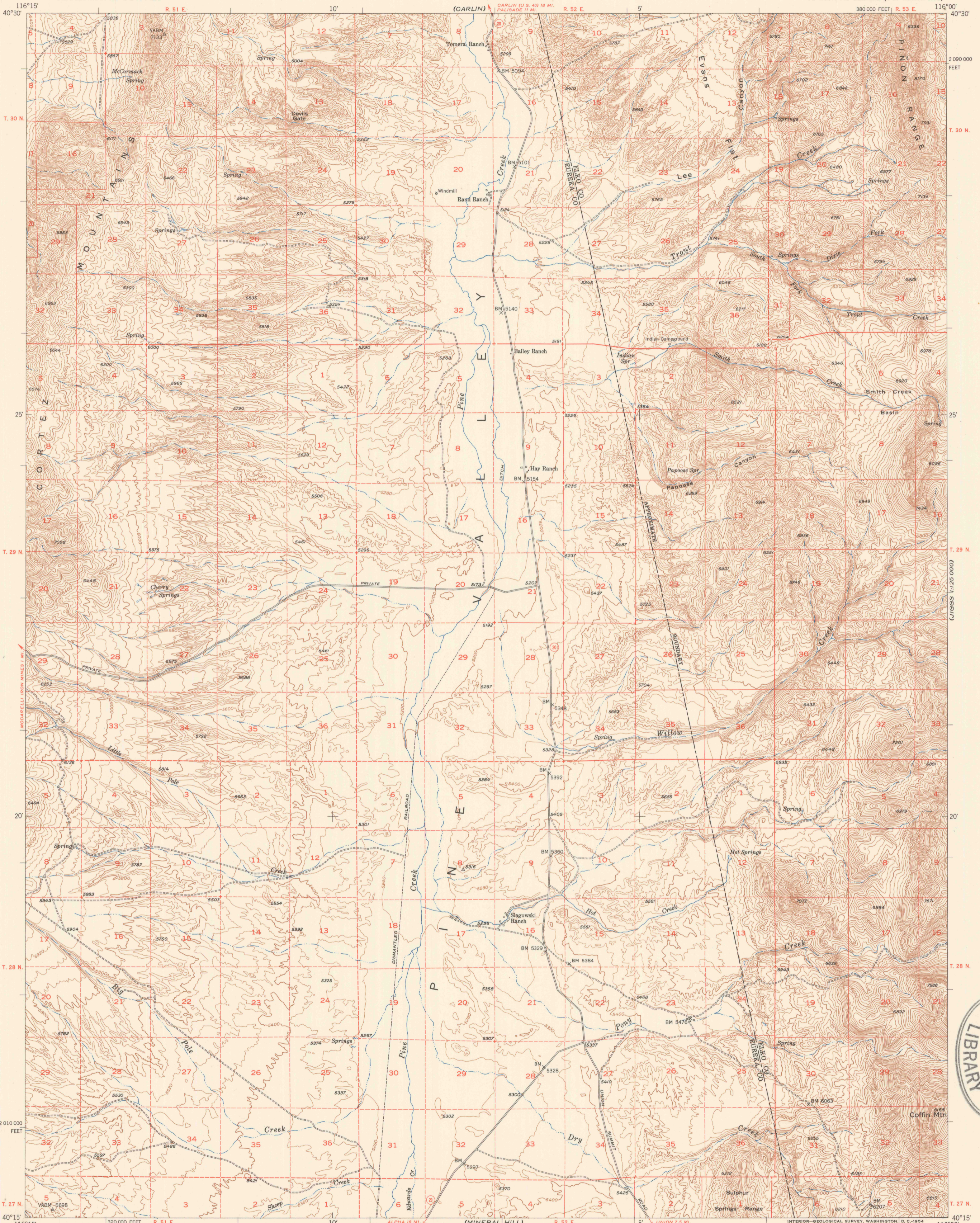
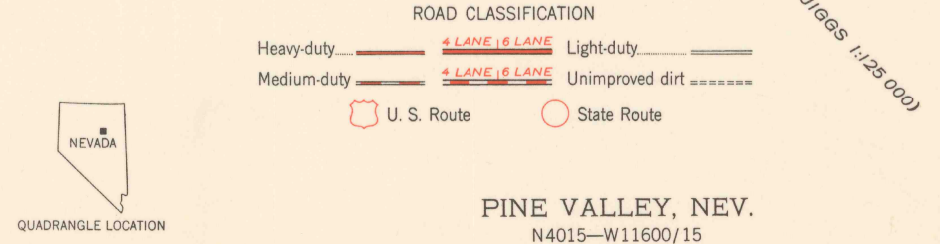
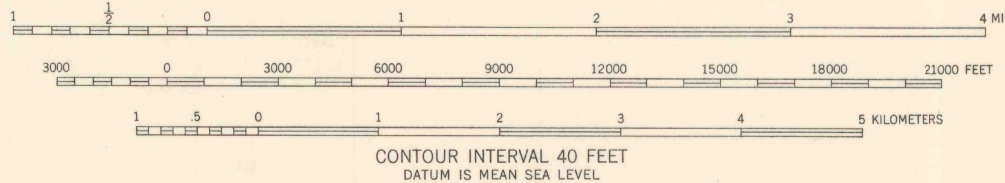
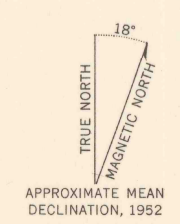


(OXIE FLATS)



U. S. GEOLOGICAL SURVEY  
WASHINGTON  
DEC - 1 1953  
LIBRARY

Mapped, edited, and published by the Geological Survey  
Control by USGS and USC&GS  
Topography from aerial photographs by multiplex methods  
Aerial photographs taken 1950. Field check 1952  
Polyconic projection. 1927 North American datum  
10,000-foot grid based on Nevada coordinate system, east zone  
Dashed land lines indicate approximate locations



THIS MAP COMPLIES WITH NATIONAL MAP ACCURACY STANDARDS  
FOR SALE BY U. S. GEOLOGICAL SURVEY, FEDERAL CENTER, DENVER, COLORADO OR WASHINGTON 25, D. C.  
A FOLDER DESCRIBING TOPOGRAPHIC MAPS AND SYMBOLS IS AVAILABLE ON REQUEST

PINE VALLEY, NEV.  
N4015-W11600/15

1952

(JUGGS 1:25,000)