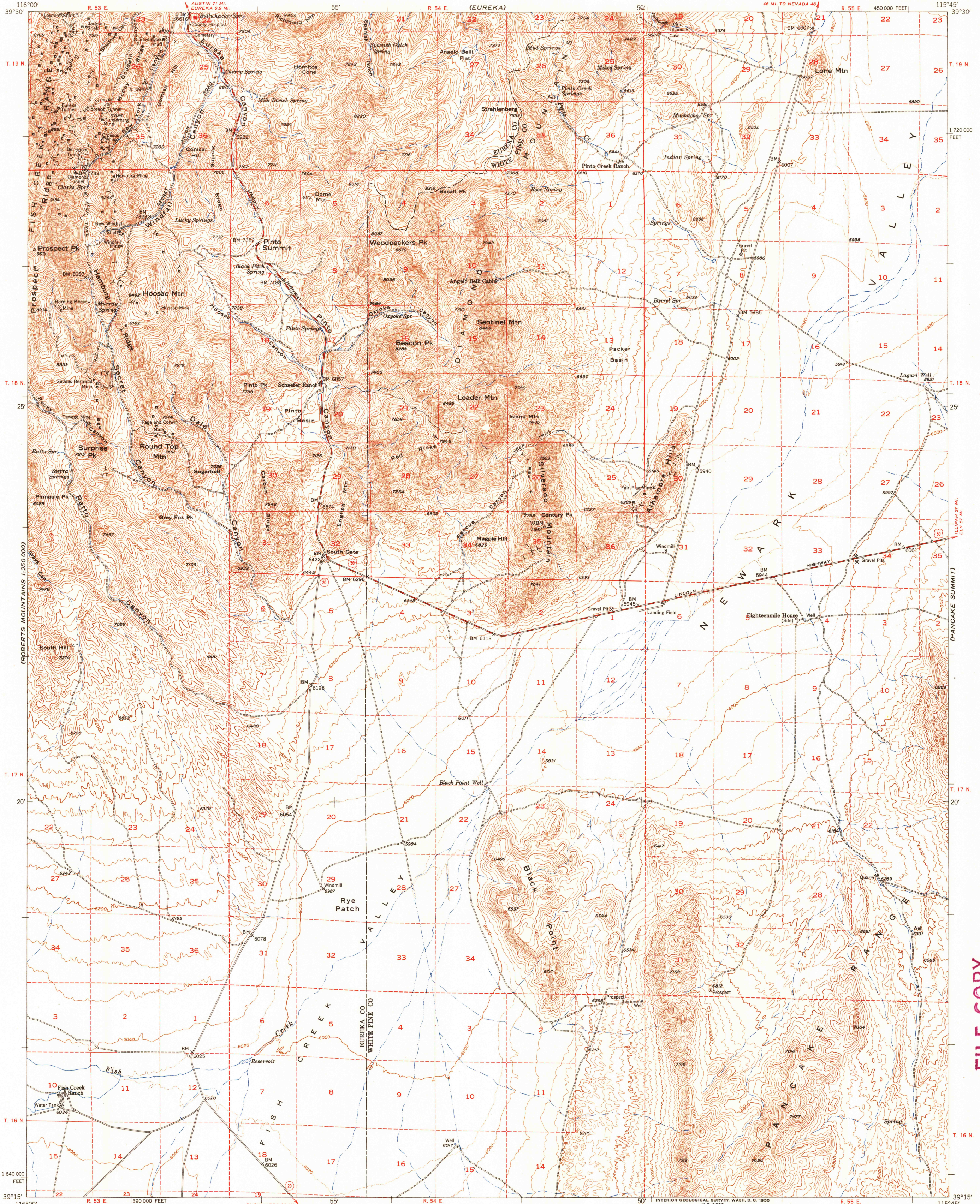


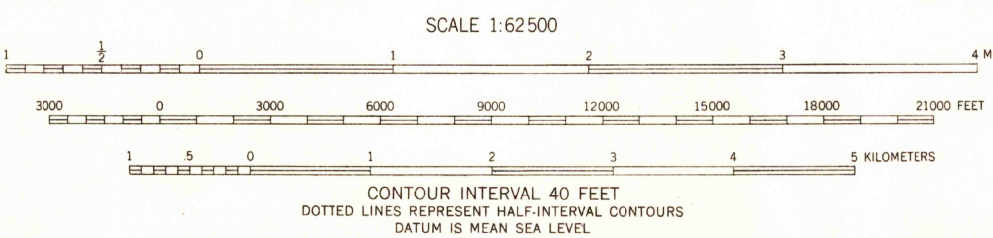
UNITED STATES
DEPARTMENT OF THE INTERIOR
GEOLOGICAL SURVEY

PINTO SUMMIT QUADRANGLE
NEVADA
15 MINUTE SERIES (TOPOGRAPHIC)



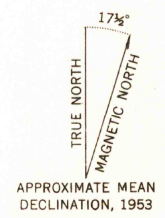
FILE COPY
MAP INFORMATION OFFICE
GEOLOGICAL SURVEY

Mapped, edited, and published by the Geological Survey
Control by USGS and USC&GS
Topography from aerial photographs by multiplex methods
and by plane-table surveys 1953. Aerial photographs taken 1950
Polyconic projection. 1927 North American datum
10,000-foot grid based on Nevada coordinate system, east zone
Dashed land lines indicate approximate locations



ROAD CLASSIFICATION

Heavy-duty	2 LANE 16 FEET	Light-duty
Medium-duty	2 LANE 16 FEET	Unimproved dirt
	U. S. Route	Slate Route



USGS
Historical File
Topographic Division
PINTO SUMMIT, NEV.
N3915-W11545/15
1953

THIS MAP COMPLIES WITH NATIONAL MAP ACCURACY STANDARDS
FOR SALE BY U. S. GEOLOGICAL SURVEY, FEDERAL CENTER, DENVER, COLORADO OR WASHINGTON 25, D. C.
A FOLDER DESCRIBING TOPOGRAPHIC MAPS AND SYMBOLS IS AVAILABLE ON REQUEST