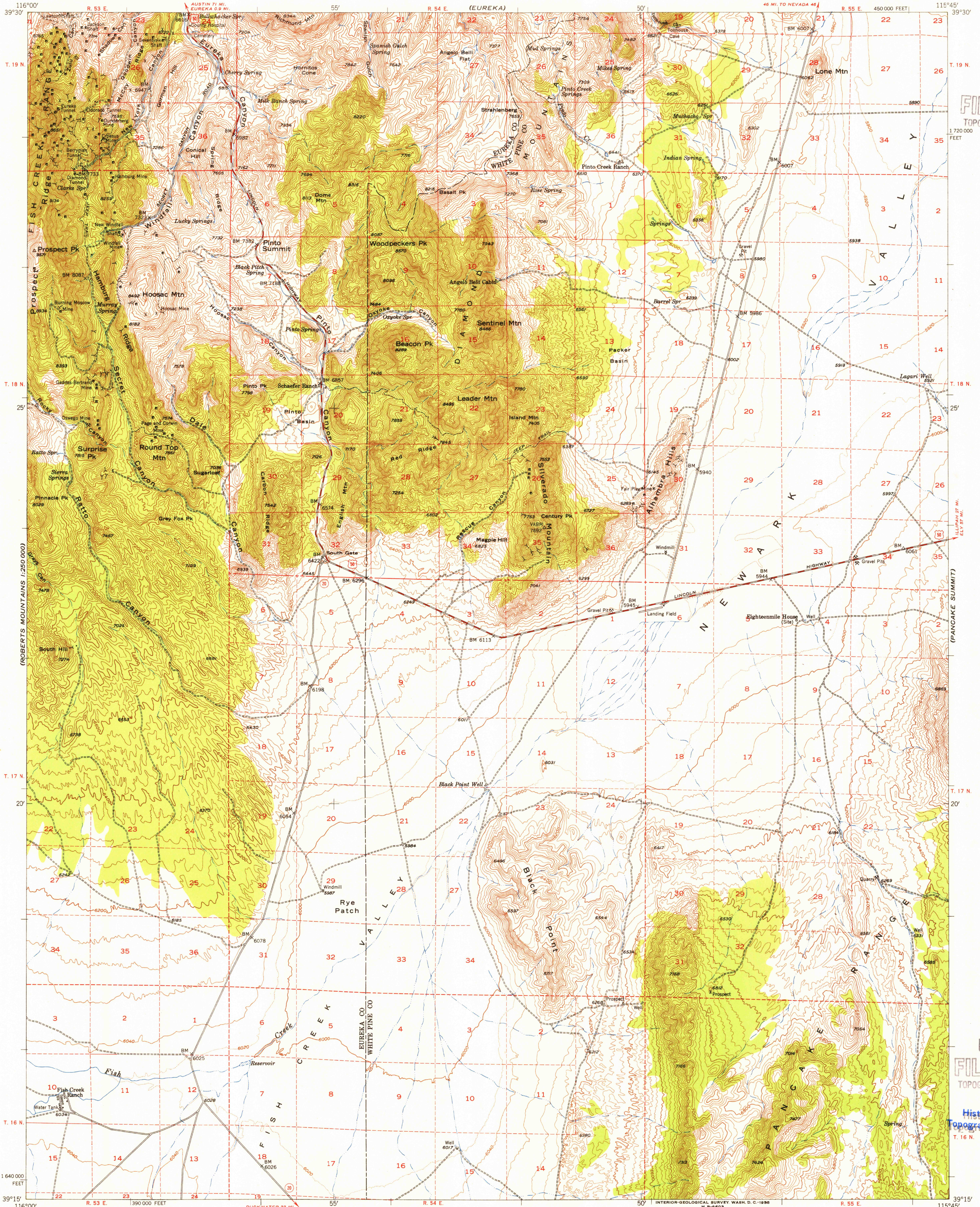


U.S.G.S.
FILE COPY
TOPOGRAPHIC DIVISION

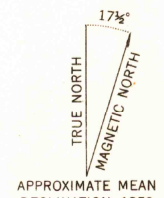
1:250,000
FEET

U.S.G.S.
FILE COPY
TOPOGRAPHIC DIVISION

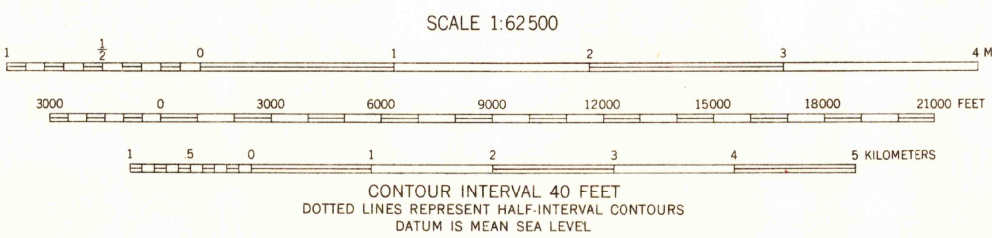
USGS
Historical File
Topographic Division



Mapped, edited, and published by the Geological Survey
Control by USGS and USC&GS
Topography from aerial photographs by multiplex methods
and by plane-table surveys 1953. Aerial photographs taken 1950
Polycyclic projection. 1927 North American datum
10,000-foot grid based on Nevada coordinate system, east zone
Dashed land lines indicate approximate locations



APPROXIMATE MEAN
DECLINATION, 1953



QUADRANGLE LOCATION

ROAD CLASSIFICATION

Heavy-duty	4 LANE 16 LANE	Light-duty
Medium-duty	2 LANE 16 LANE	Unimproved dirt
U.S. Route		Slate Route

PINTO SUMMIT, NEV.
N3915-W11545/15

1953

MAY 13 1955

THIS MAP COMPLIES WITH NATIONAL MAP ACCURACY STANDARDS
FOR SALE BY U. S. GEOLOGICAL SURVEY, FEDERAL CENTER, DENVER, COLORADO OR WASHINGTON 25, D. C.
A FOLDER DESCRIBING TOPOGRAPHIC MAPS AND SYMBOLS IS AVAILABLE ON REQUEST