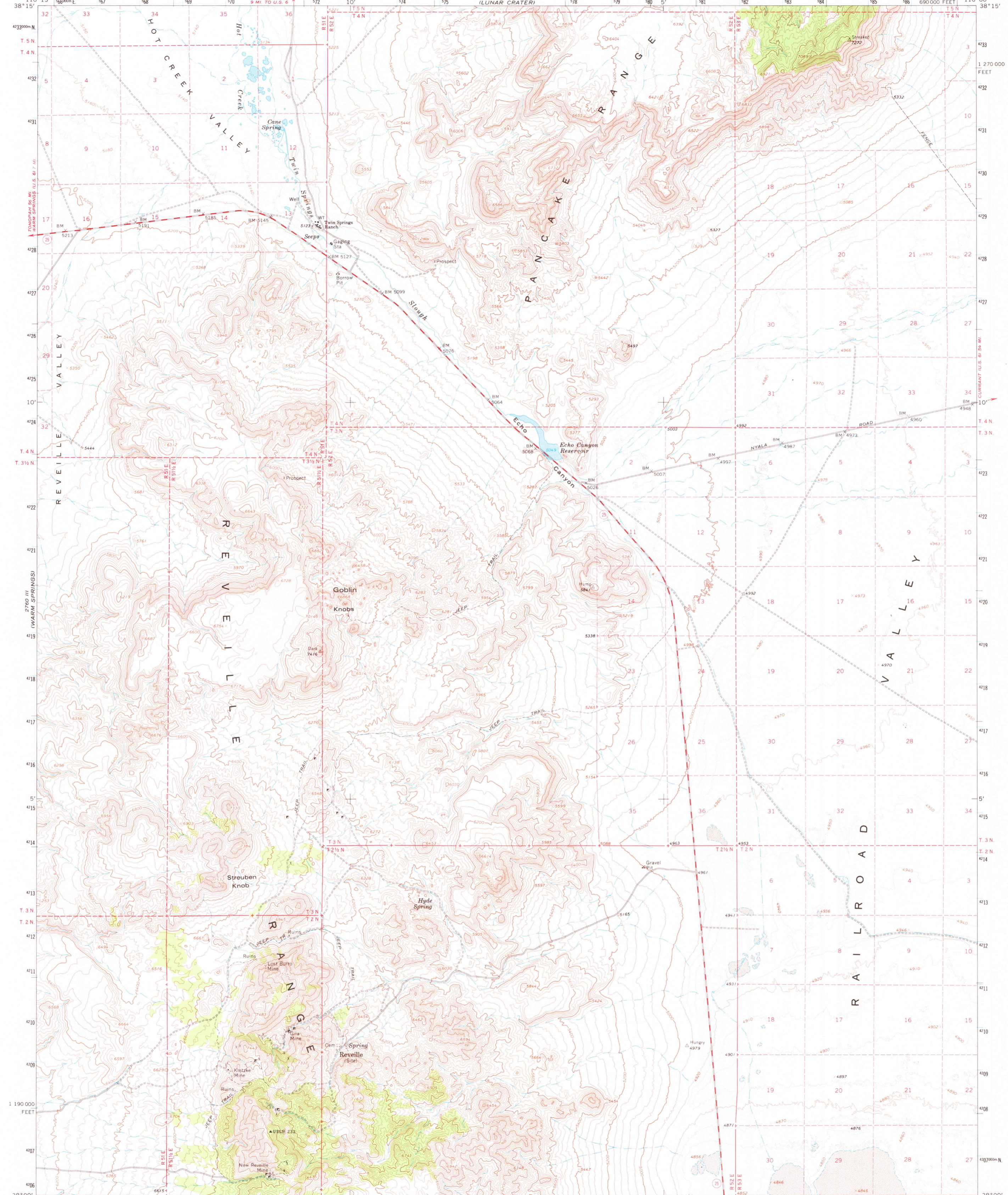
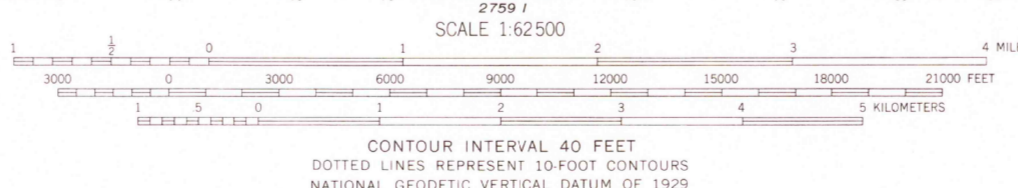
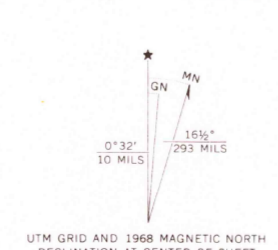


2760 I  
(THE WALL)

2760 IV  
(THE WALL)



Mapped, edited, and published by the Geological Survey in cooperation with the Atomic Energy Commission Control by USGS and USC&GS  
Topography by photogrammetric methods from aerial photographs taken 1967. Field checked 1968  
Polyconic projection. 1927 North American datum 10,000-foot grid based on Nevada coordinate system, central zone 1000-meter Universal Transverse Mercator grid ticks, zone 11, shown in blue  
Where omitted, land lines have not been established or are not shown because of insufficient data



ROAD CLASSIFICATION

Secondary highway, all weather, hard surface	Light-duty road, all weather, improved surface
Unimproved road, fair or dry weather	State Route

This area also covered by 7.5 minute 1:24,000-scale maps: Echo Canyon 1968, Twin Springs Slough 1968, Reville 1968 and Reville SE 1968  
REVELLE, NEV.  
N3800—W11600/15  
1968  
AMS 2760 II—SERIES V796

THIS MAP COMPLIES WITH NATIONAL MAP ACCURACY STANDARDS  
FOR SALE BY U. S. GEOLOGICAL SURVEY, DENVER, COLORADO 80225, OR RESTON, VIRGINIA 22092  
A FOLDER DESCRIBING TOPOGRAPHIC MAPS AND SYMBOLS IS AVAILABLE ON REQUEST

FEB 18 1978  
3800