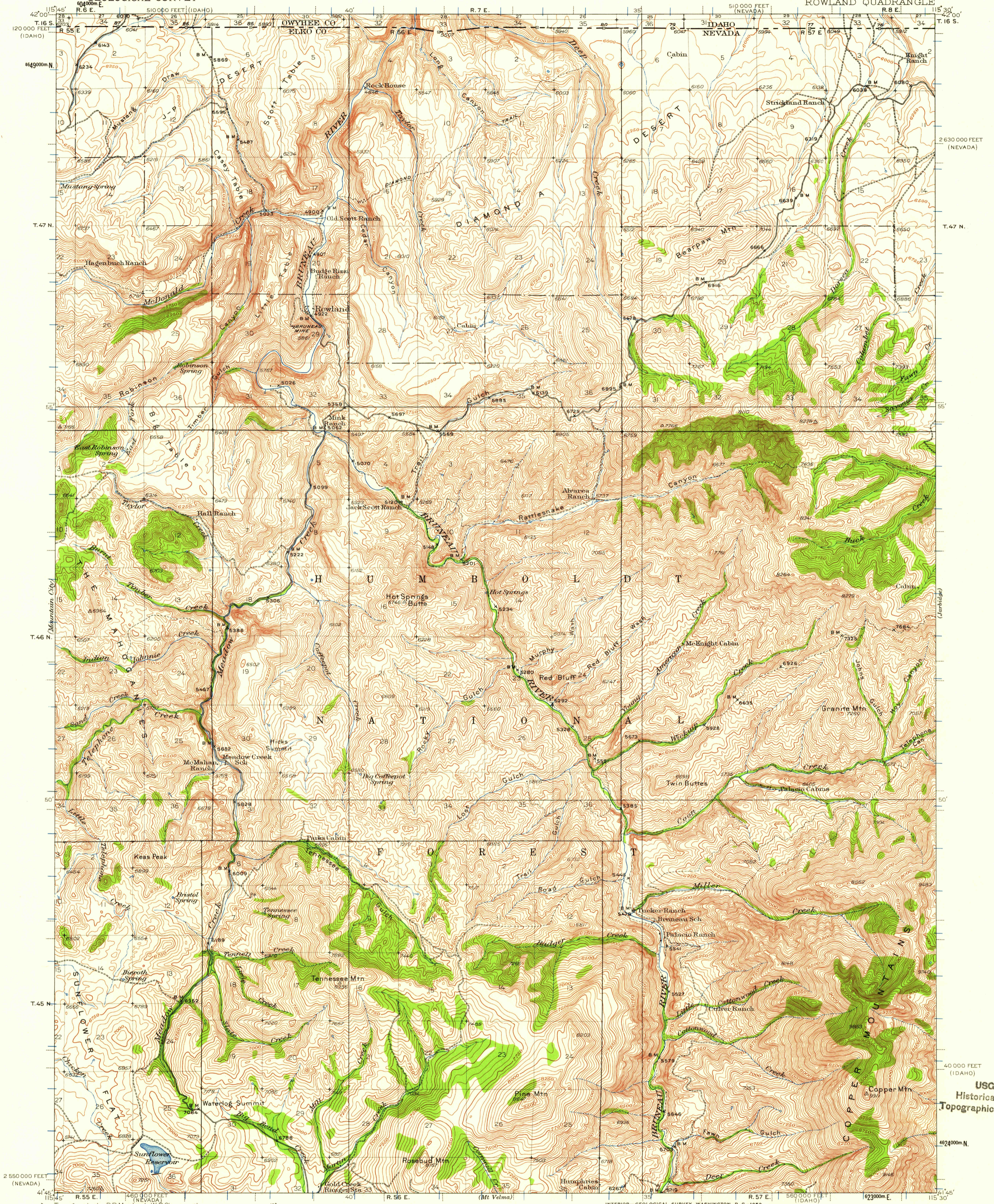
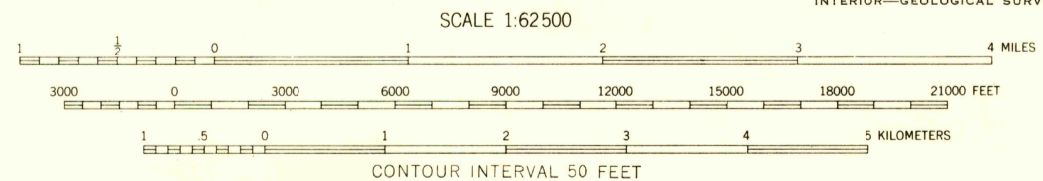
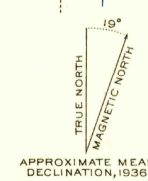


UNITED STATES
DEPARTMENT OF THE INTERIOR
GEOLOGICAL SURVEY

NEVADA-IDAHO
ROWLAND QUADRANGLE



Topography by R.R. Monbeck, W.R. Chenoweth,
L.O. Newsome, and G.R. Fischer
Surveyed in 1935-1936



CONTOUR INTERVAL 50 FEET
DATUM IS MEAN SEA LEVEL

Interior-Geological Survey, Washington, D. C.—1939
Polyconic projection, 1927 North American datum
10,000-foot grids based on Nevada (East) and
Idaho (West) rectangular coordinate systems
1000 meter Universal Transverse Mercator grid ticks,
zone 11, shown in blue

ROWLAND, NEV.-IDAHO
N4145-W11530/15

1936

FOR SALE BY U. S. GEOLOGICAL SURVEY, DENVER 25, COLORADO OR WASHINGTON 25, D. C.
A FOLDER DESCRIBING TOPOGRAPHIC MAPS AND SYMBOLS IS AVAILABLE ON REQUEST

U.S.G.S.
FILE COPY
TOPOGRAPHIC DIVISION

USGS
Historical File
Topographic Division

SEP 25 1959

1250