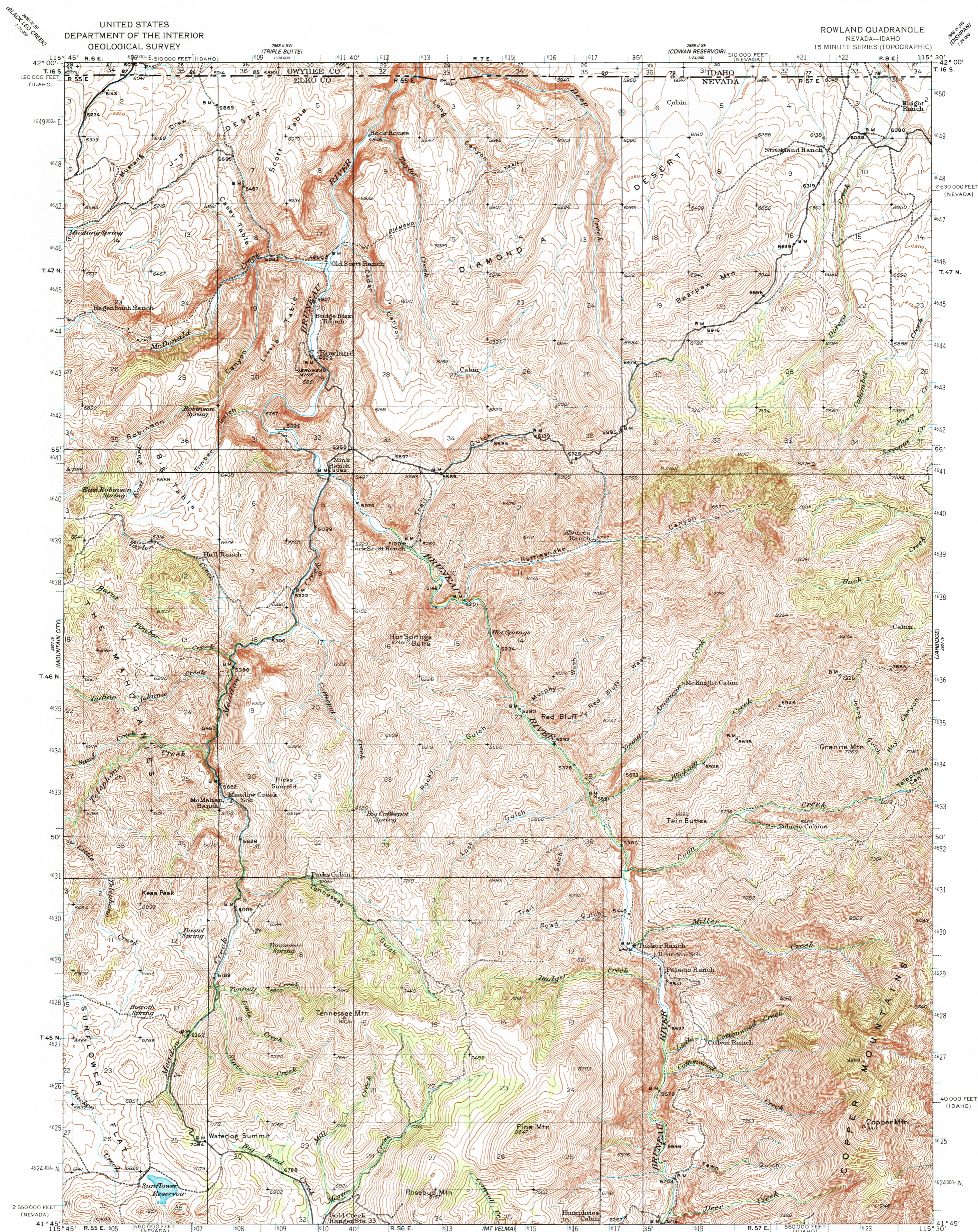
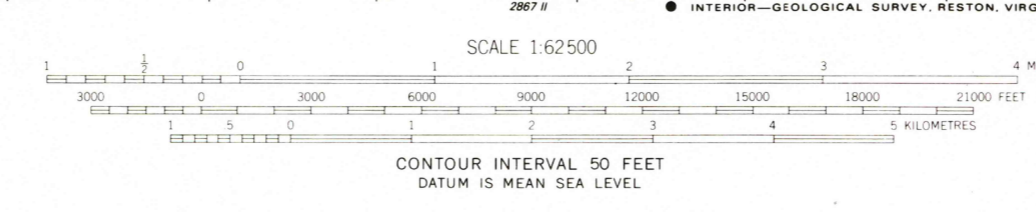


UNITED STATES
DEPARTMENT OF THE INTERIOR
GEOLOGICAL SURVEY

ROWLAND QUADRANGLE
NEVADA-IDAHO
15 MINUTE SERIES (TOPOGRAPHIC)



Topography by R.R. Monbeck, W.R. Chenoweth, L.O. Newsome, and G.R. Fischer Surveyed in 1935-1936
Polyconic projection, 1927 North American datum
10,000-foot grids based on Nevada (East) and Idaho (West) rectangular coordinate systems
1000-meter Universal Transverse Mercator grid ticks, zone 11, shown in blue



ROAD CLASSIFICATION
Light duty ————— Unimproved dirt - - - - -
Trails - - - - -

ROWLAND, NEV.-IDAHO
41115-G5-TF-062

THIS MAP COMPLIES WITH NATIONAL MAP ACCURACY STANDARDS
FOR SALE BY U.S. GEOLOGICAL SURVEY, DENVER, COLORADO 80225, OR RESTON, VIRGINIA 22092
A FOLDER DESCRIBING TOPOGRAPHIC MAPS AND SYMBOLS IS AVAILABLE ON REQUEST

USGS Library
Reston, VA.
Topo Archive

FEB 25 1988