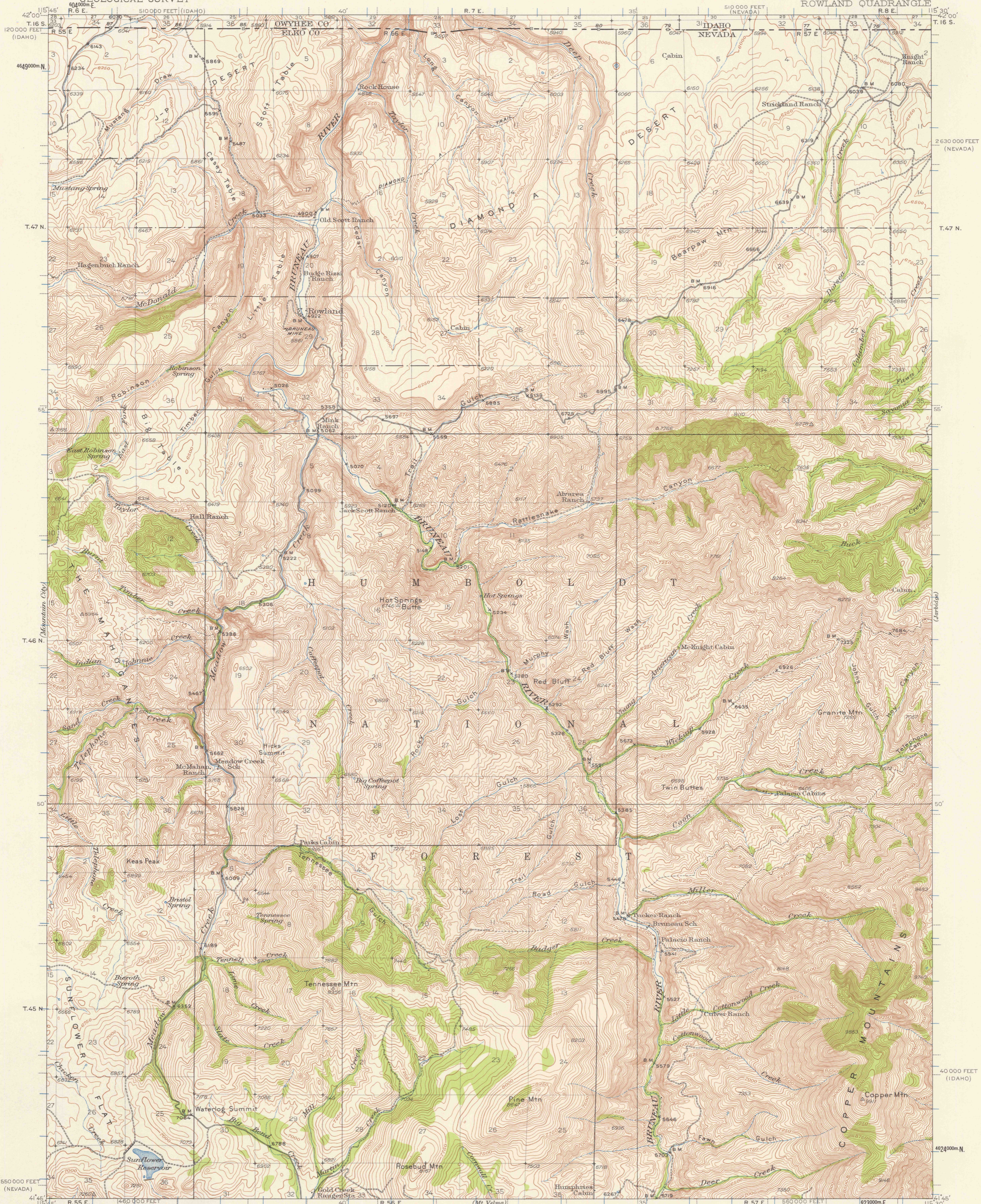
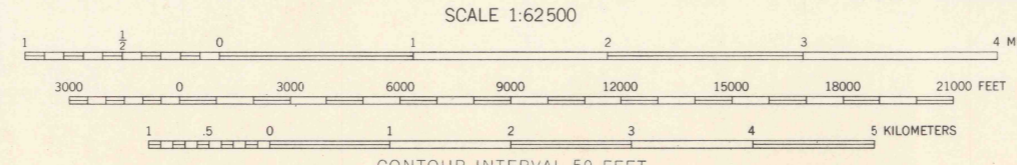
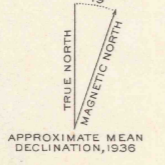


UNITED STATES
DEPARTMENT OF THE INTERIOR
GEOLOGICAL SURVEY

NEVADA-IDAHO
ROWLAND QUADRANGLE



Topography by R.R. Monbeck, W.R. Chenoweth,
L.O. Newsome, and G.R. Fischer
Surveyed in 1935-1936



FILE COPY
NOV 1 1957
MAP INFORMATION OFFICE
GEOLOGICAL SURVEY

ROWLAND, NEV-IDAHO
N4145-W11530/15

1936

FOR SALE BY U. S. GEOLOGICAL SURVEY, DENVER 2, COLORADO OR WASHINGTON 25, D. C.
A FOLDER DESCRIBING TOPOGRAPHIC MAPS AND SYMBOLS IS AVAILABLE ON REQUEST