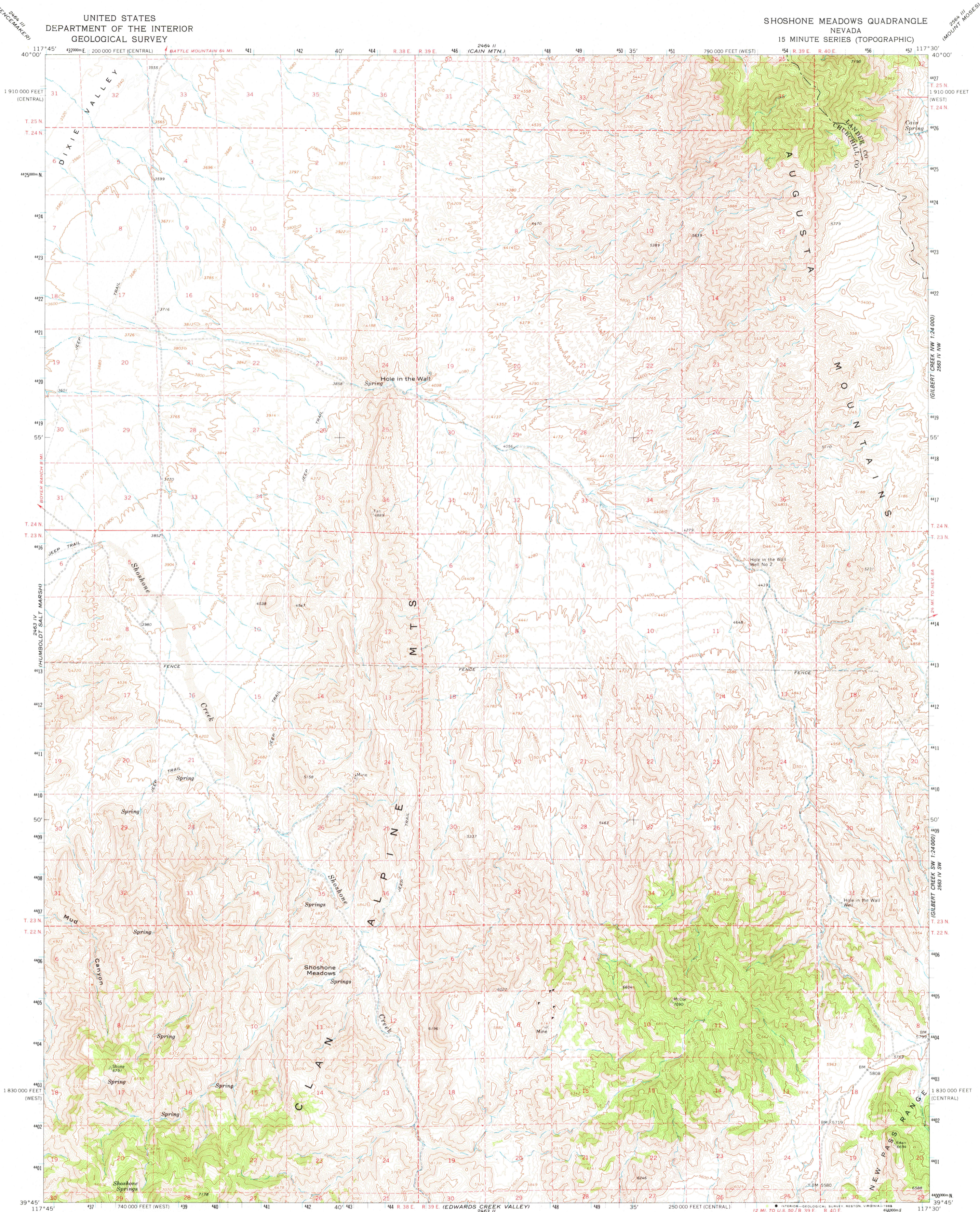
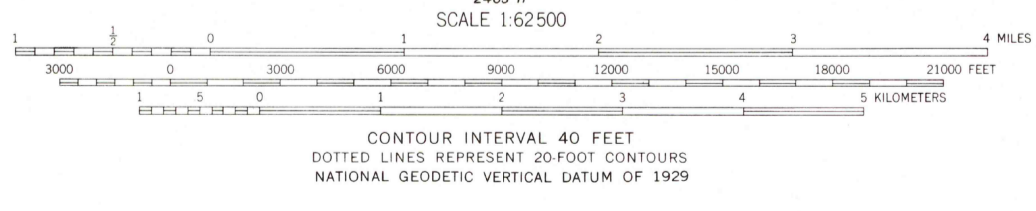
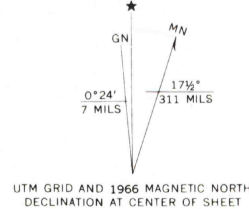


UNITED STATES  
DEPARTMENT OF THE INTERIOR  
GEOLOGICAL SURVEY

SHOSHONE MEADOWS QUADRANGLE  
NEVADA  
15 MINUTE SERIES (TOPOGRAPHIC)



Maped, edited, and published by the Geological Survey  
Control by USGS and USC&GS  
Topography by photogrammetric methods from aerial  
photographs taken 1964. Field checked 1966  
Polyconic projection. 1927 North American datum  
10,000-foot grids based on Nevada coordinate system,  
west and central zones  
1000-meter Universal Transverse Mercator grid ticks,  
zone 11, shown in blue  
To place on the predicted North American Datum 1983  
move the projection lines 13 meters north and  
81 meters east



ROAD CLASSIFICATION  
Unimproved dirt

SHOSHONE MEADOWS, NEV.  
N3945—W11730/15  
1966  
DMA 2463 I—SERIES V796

THIS MAP COMPLIES WITH NATIONAL MAP ACCURACY STANDARDS  
FOR SALE BY U. S. GEOLOGICAL SURVEY, DENVER, COLORADO 80225, OR RESTON, VIRGINIA 22092  
A FOLDER DESCRIBING TOPOGRAPHIC MAPS AND SYMBOLS IS AVAILABLE ON REQUEST

APR 27 1982

RETURN TO:  
USGS MMD HISTORICAL MAP ARCHIVES