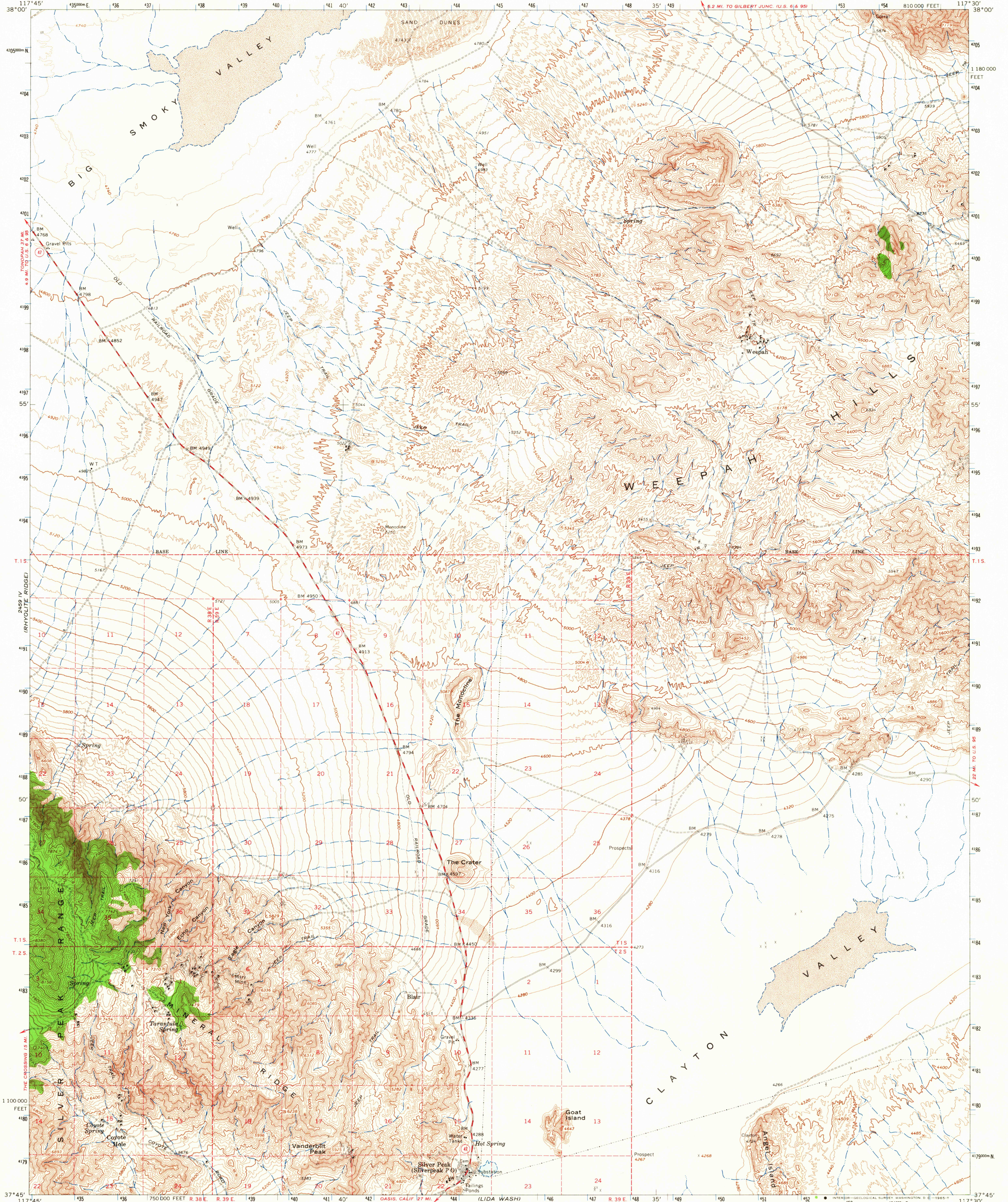
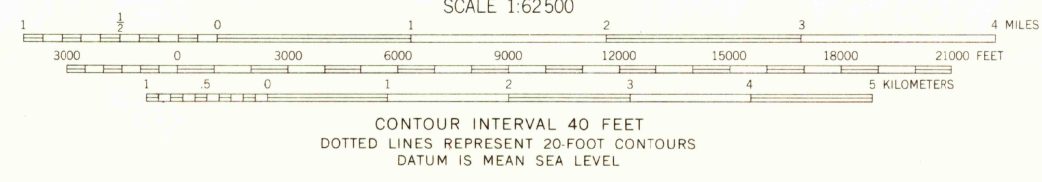
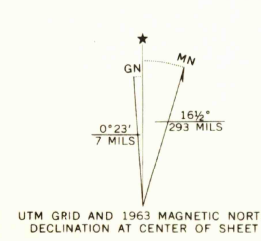


2860 III
(LONE MTN)



Maped, edited, and published by the Geological Survey
Control by USGS and USC&GS
Topography by photogrammetric methods from aerial
photographs taken 1958 and planetable surveys 1963
Polyconic projection. 1927 North American datum
10,000-foot grid based on Nevada coordinate system, west zone
1000-meter Universal Transverse Mercator grid ticks,
zone 11, shown in blue
Where omitted, land lines have not been established
or are not shown because of insufficient data



ROAD CLASSIFICATION
Medium-duty — Light-duty
Unimproved dirt — State Route

USGS
Historical File
Topographic Division

JUL 6 1965

THIS MAP COMPLIES WITH NATIONAL MAP ACCURACY STANDARDS
FOR SALE BY U. S. GEOLOGICAL SURVEY, DENVER 25, COLORADO OR WASHINGTON 25, D. C.
A FOLDER DESCRIBING TOPOGRAPHIC MAPS AND SYMBOLS IS AVAILABLE ON REQUEST

U.S.G.S.
FILE COPY
TOPOGRAPHIC DIVISION

SILVER PEAK, NEV.
N3745-W11730/15
1963
AMS 2459 I-SERIES V796

3205