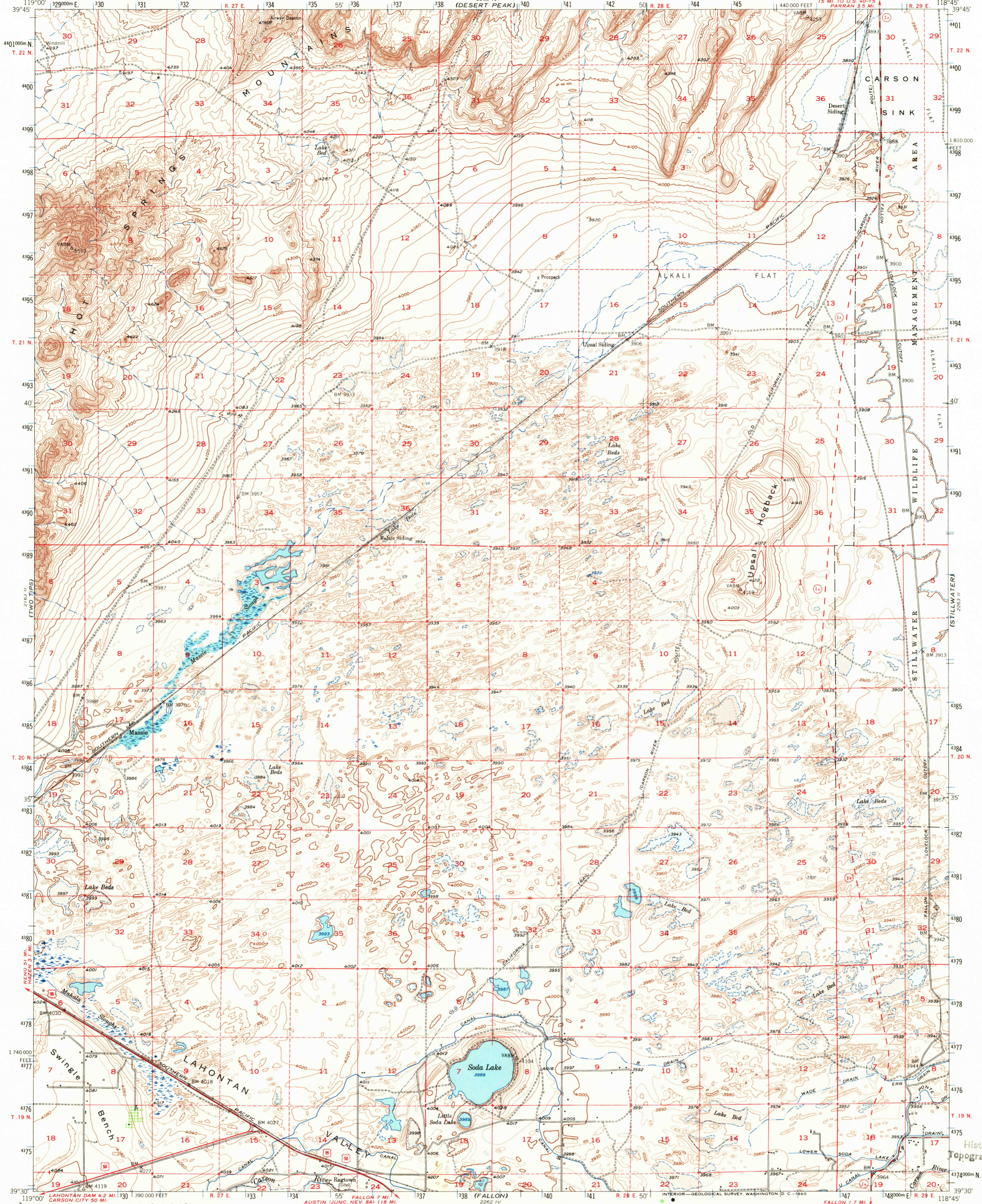
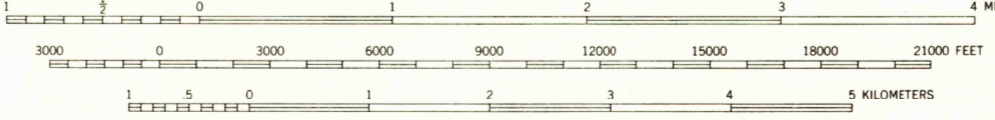
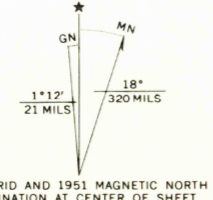


UNITED STATES
DEPARTMENT OF THE INTERIOR
GEOLOGICAL SURVEY

SODA LAKE QUADRANGLE
NEVADA-CHURCHILL CO.
15 MINUTE SERIES (TOPOGRAPHIC)



Control by USGS and USC&GS
Topography from aerial photographs by multiplex methods and by plane-table surveys 1951. Aerial photographs taken 1948
Polyconic projection. 1927 North American datum
10,000-foot grid based on Nevada coordinate system, west zone
Dashed land lines indicate approximate locations
Unchecked elevations are shown in brown
1000-meter Universal Transverse Mercator grid ticks, zone 11, shown in blue



CONTOUR INTERVAL 20 FEET
DOTTED LINES REPRESENT HALF-INTERVAL CONTOURS
DATUM IS MEAN SEA LEVEL

THIS MAP COMPLIES WITH NATIONAL MAP ACCURACY STANDARDS
FOR SALE BY U. S. GEOLOGICAL SURVEY, DENVER, COLORADO 80225 OR WASHINGTON, D. C. 20242
A FOLDER DESCRIBING TOPOGRAPHIC MAPS AND SYMBOLS IS AVAILABLE ON REQUEST



ROAD CLASSIFICATION
Heavy-duty ——— Light-duty ———
Medium-duty - - - - - Unimproved dirt - - - - -
U. S. Route (red circle with number)
State Route (black circle with number)

U.S.G.S. SODA LAKE, NEV.
N3930-W11845/15
1951

FILE COPY
TOPOGRAPHIC DIVISION

AMS 2263 III—SERIES V796

OCT 22 1965
4160