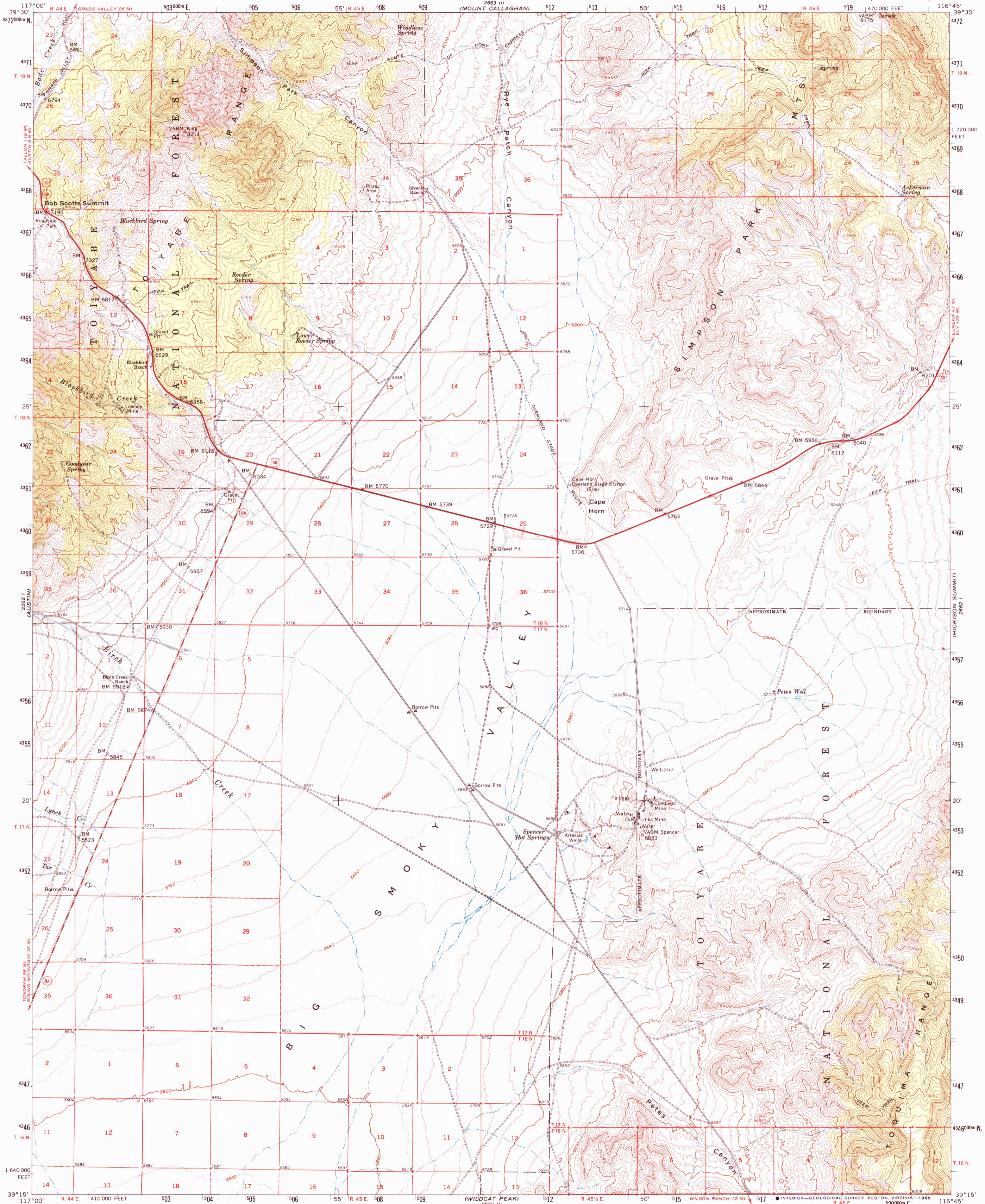
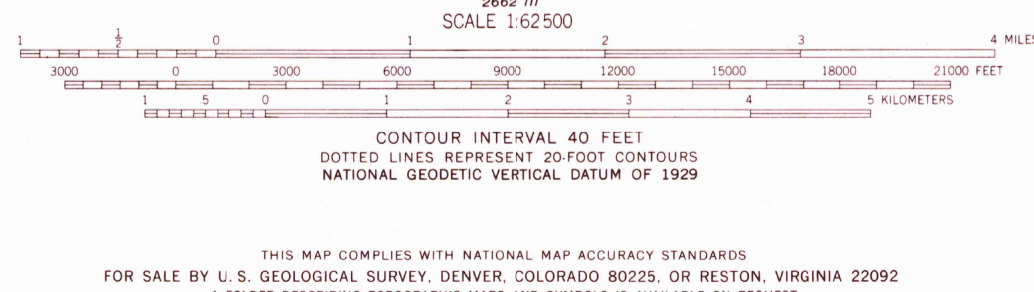
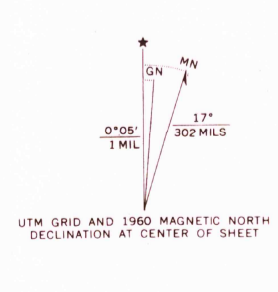


UNITED STATES
DEPARTMENT OF THE INTERIOR
GEOLOGICAL SURVEY

SPENCER HOT SPRINGS QUADRANGLE
NEVADA-LANDER CO.
15 MINUTE SERIES (TOPOGRAPHIC)



Mapped, edited, and published by the Geological Survey
Control by USGS and USC&GS
Topography from aerial photographs by photogrammetric methods
and by planetable surveys 1960. Aerial photographs taken 1956
Polyconic projection. 1927 North American datum
10,000-foot grid based on Nevada coordinate system,
central zone
1000-meter Universal Transverse Mercator grid ticks,
zone 11, shown in blue
To place on the predicted North American Datum 1983
move the projection lines 12 meters north and
79 meters east
Where omitted, land lines have not been established
or are not shown because of insufficient data
There may be private inholdings within the boundaries of
the National or State reservations shown on this map



ROAD CLASSIFICATION

Heavy-duty	Light-duty
Medium-duty	Unimproved dirt
U.S. Route	State Route

NEVADA
QUADRANGLE LOCATION

SPENCER HOT SPRINGS, NEV.
N3915-W11645/15
1960
DMA 2662 IV—SERIES V796

USGS Library
Reston, VA.
Topo Archive