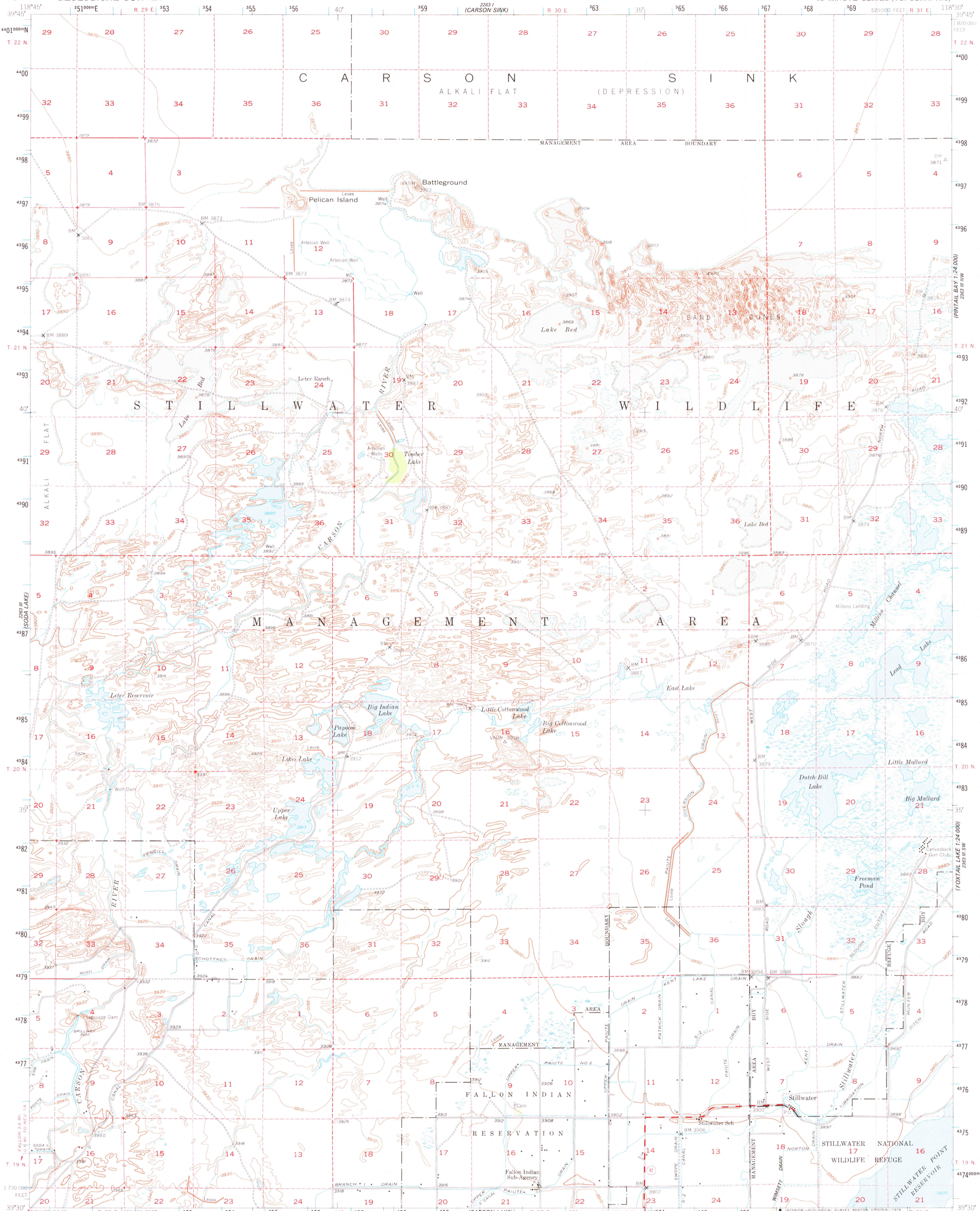
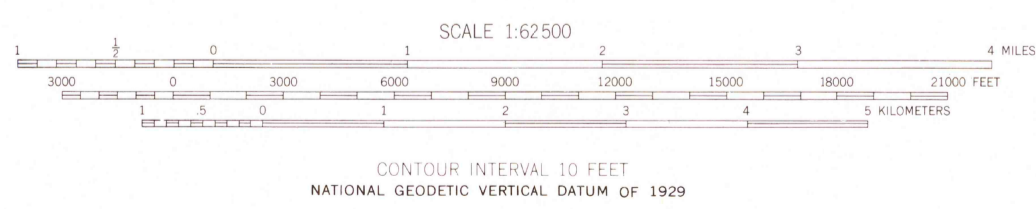
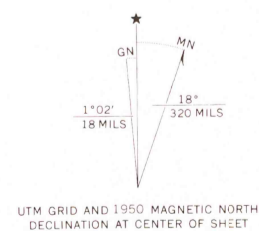


23° 14' 30" N
118° 30' 00" W



Maped, edited, and published by the Geological Survey
Control by USGS and USC&GS
Culture and drainage by multiple methods
from aerial photographs taken 1948
Topography by plane-table surveys 1950
Polyconic projection, 1927 North American datum
10,000-foot grid based on Nevada coordinate system,
west zone
Dashed land lines indicate approximate location
1000-meter Universal Transverse Mercator grid ticks,
zone 11, shown in blue



ROAD CLASSIFICATION

Heavy-duty	4 LANE 6 LANE	Light-duty
Medium-duty	4 LANE 6 LANE	Unimproved dirt
U.S. Route		State Route

THIS MAP COMPLIES WITH NATIONAL MAP ACCURACY STANDARDS
FOR SALE BY U.S. GEOLOGICAL SURVEY, DENVER, COLORADO 80225, OR RESTON, VIRGINIA 22092
A FOLDER DESCRIBING TOPOGRAPHIC MAPS AND SYMBOLS IS AVAILABLE ON REQUEST



USGS
Historical File
Topographic Division

STILLWATER, NEV.
N3930-W11830/15
1950
AMS 2265 1-SERIES V796

APR 07 1978
1800