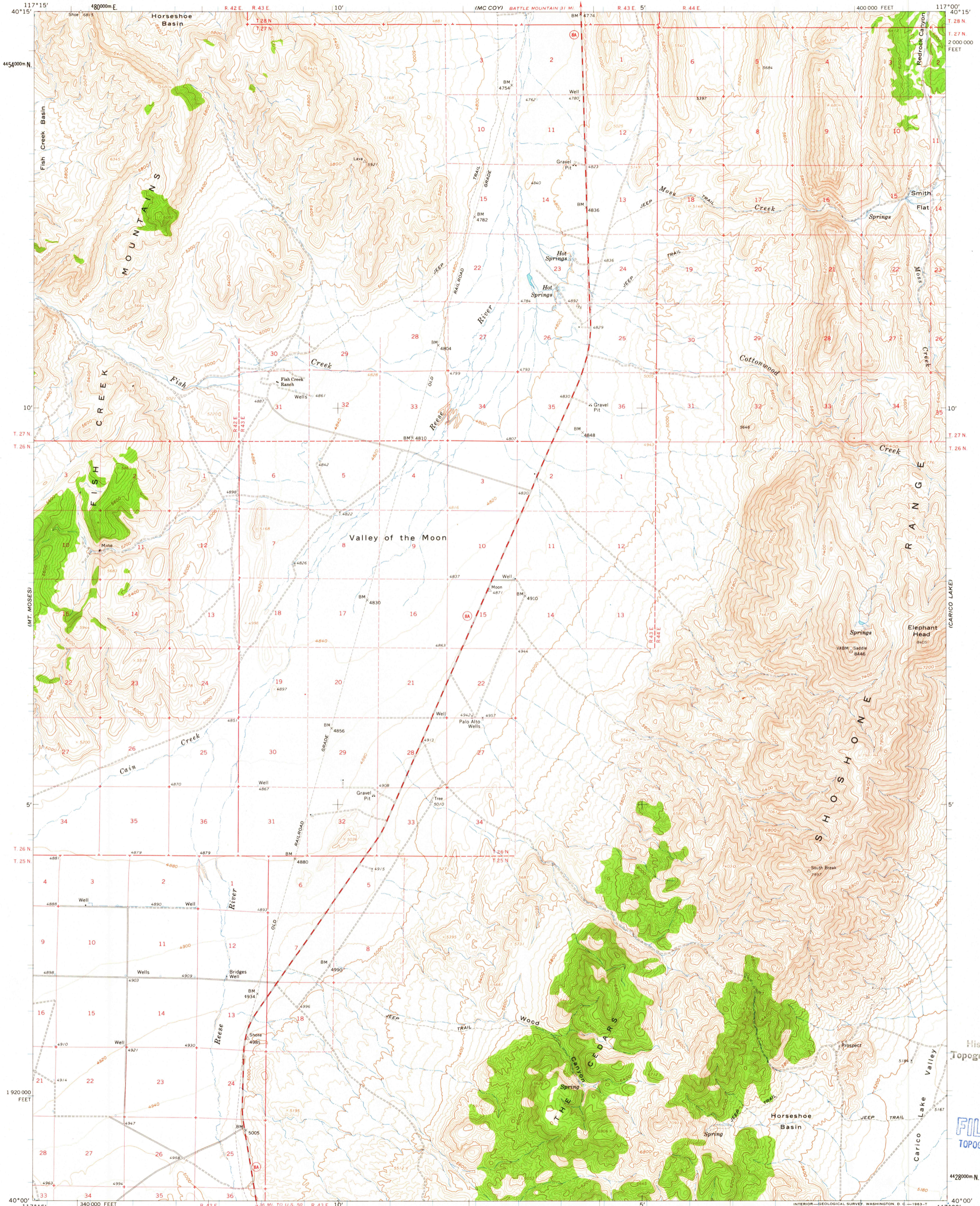


BUFFALO SPRINGS

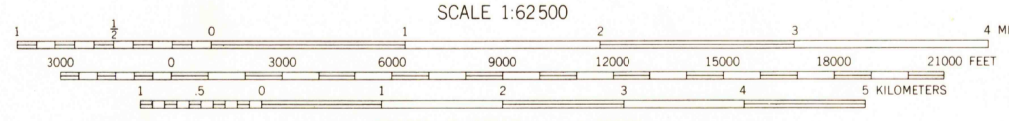
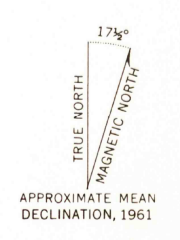
UNITED STATES  
DEPARTMENT OF THE INTERIOR  
GEOLOGICAL SURVEY

THE CEDARS QUADRANGLE  
NEVADA-LANDER CO.  
15 MINUTE SERIES (TOPOGRAPHIC)

MT. LEWIS



Mapped, edited, and published by the Geological Survey  
Control by USGS and USC&GS  
Topography by photogrammetric methods from aerial  
photographs taken 1957 and planetable surveys 1961  
Polyconic projection. 1927 North American datum  
10,000-foot grid based on Nevada coordinate system,  
central zone  
1000-meter Universal Transverse Mercator grid ticks,  
zone 11, shown in blue  
Where omitted, land lines have not been established



SCALE 1:62500  
CONTOUR INTERVAL 40 FEET  
DOTTED LINES REPRESENT 20-FOOT CONTOURS  
DATUM IS MEAN SEA LEVEL



ROAD CLASSIFICATION  
Medium-duty ——— Light-duty ———  
Unimproved dirt - - - - -  
State Route ○

USGS  
Historical File  
Topographic Division  
U.S.G.S.  
FILE COPY  
TOPOGRAPHIC DIVISION

THE CEDARS, NEV.  
N4000-W11700/15

1961

2135

JUL 26 1963