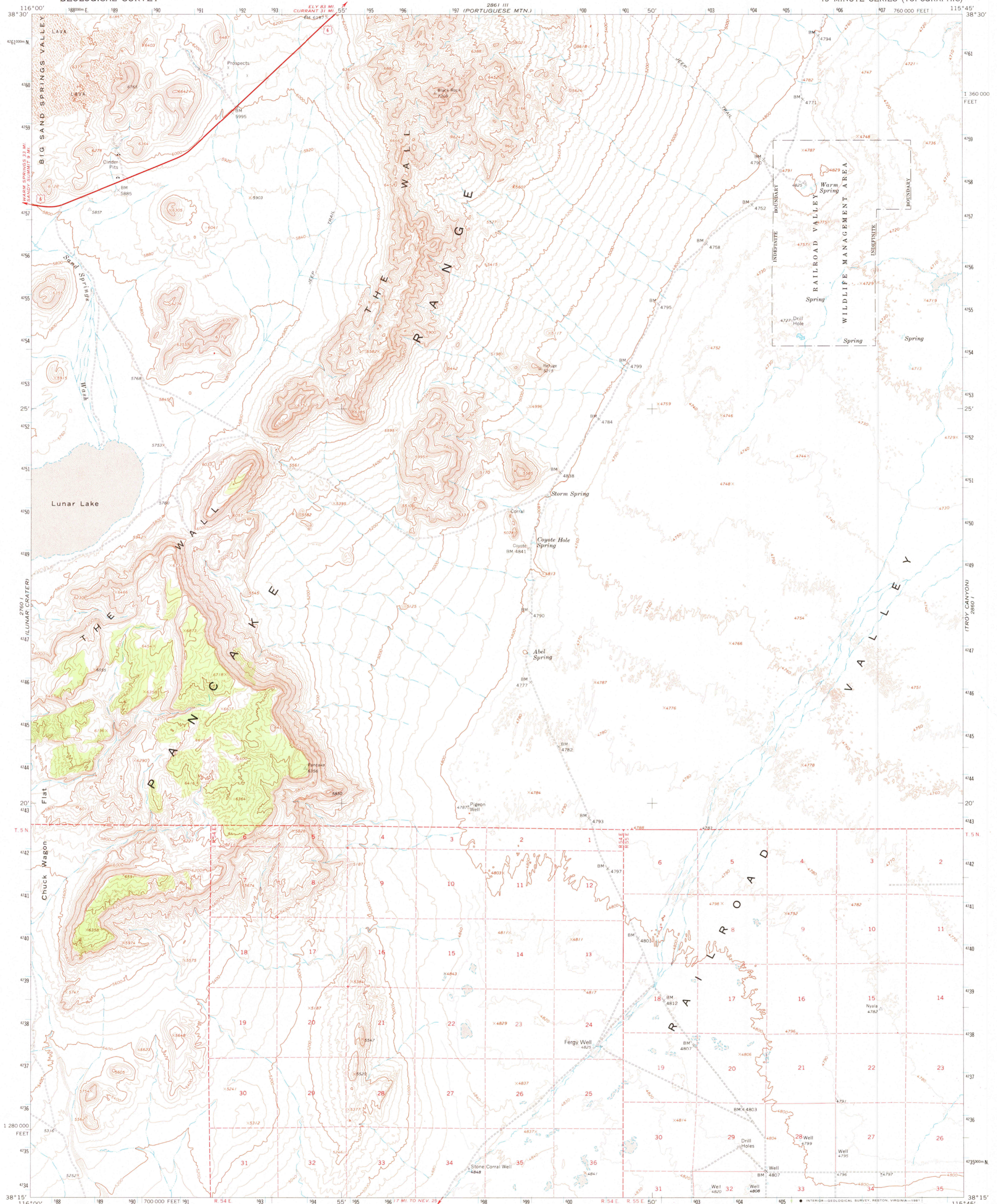


UNITED STATES
DEPARTMENT OF THE INTERIOR
GEOLOGICAL SURVEY

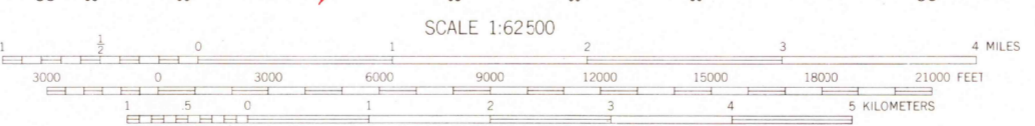
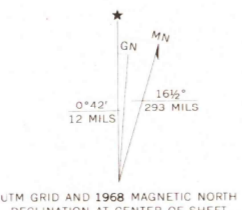
THE WALL QUADRANGLE
NEVADA—NYE CO.
15 MINUTE SERIES (TOPOGRAPHIC)

MOORE'S STATION

BLUE EAGLE SPRING



Mapped, edited, and published by the Geological Survey in cooperation with the Atomic Energy Commission Control by USGS and USC&GS
Topography by photogrammetric methods from aerial photographs taken 1967. Field checked 1968
Polyconic projection. 1927 North American datum. 10,000-foot grid based on Nevada coordinate system, central zone 1000-meter Universal Transverse Mercator grid ticks, zone 11, shown in blue
To place on the predicted North American Datum 1983 move the projection lines 10 meters north and 76 meters east
Where omitted, land lines have not been established
There may be private inholdings within the boundaries of the National or State reservations shown on this map



CONTOUR INTERVAL 40 FEET
DOTTED LINES REPRESENT 10-FOOT CONTOURS
NATIONAL GEODETIC VERTICAL DATUM OF 1929

THIS MAP COMPLIES WITH NATIONAL MAP ACCURACY STANDARDS
FOR SALE BY U.S. GEOLOGICAL SURVEY, DENVER, COLORADO 80225, OR RESTON, VIRGINIA 22092
A FOLDER DESCRIBING TOPOGRAPHIC MAPS AND SYMBOLS IS AVAILABLE ON REQUEST

ROAD CLASSIFICATION
Primary highway, all weather, hard surface
Unimproved road, fair or dry weather
U.S. Route



This area also covered by 7.5-minute, 1:24,000-scale maps: The Wall, The Wall SW, The Wall SE, The Wall NE, surveyed 1968

THE WALL, NEV.
N3815—W11545/15
1968
DMA 2860 IV—SERIES V796

USGS
HISTORICAL FILE
NATIONAL MAPPING DIVISION

JUL 7 1981

1600