

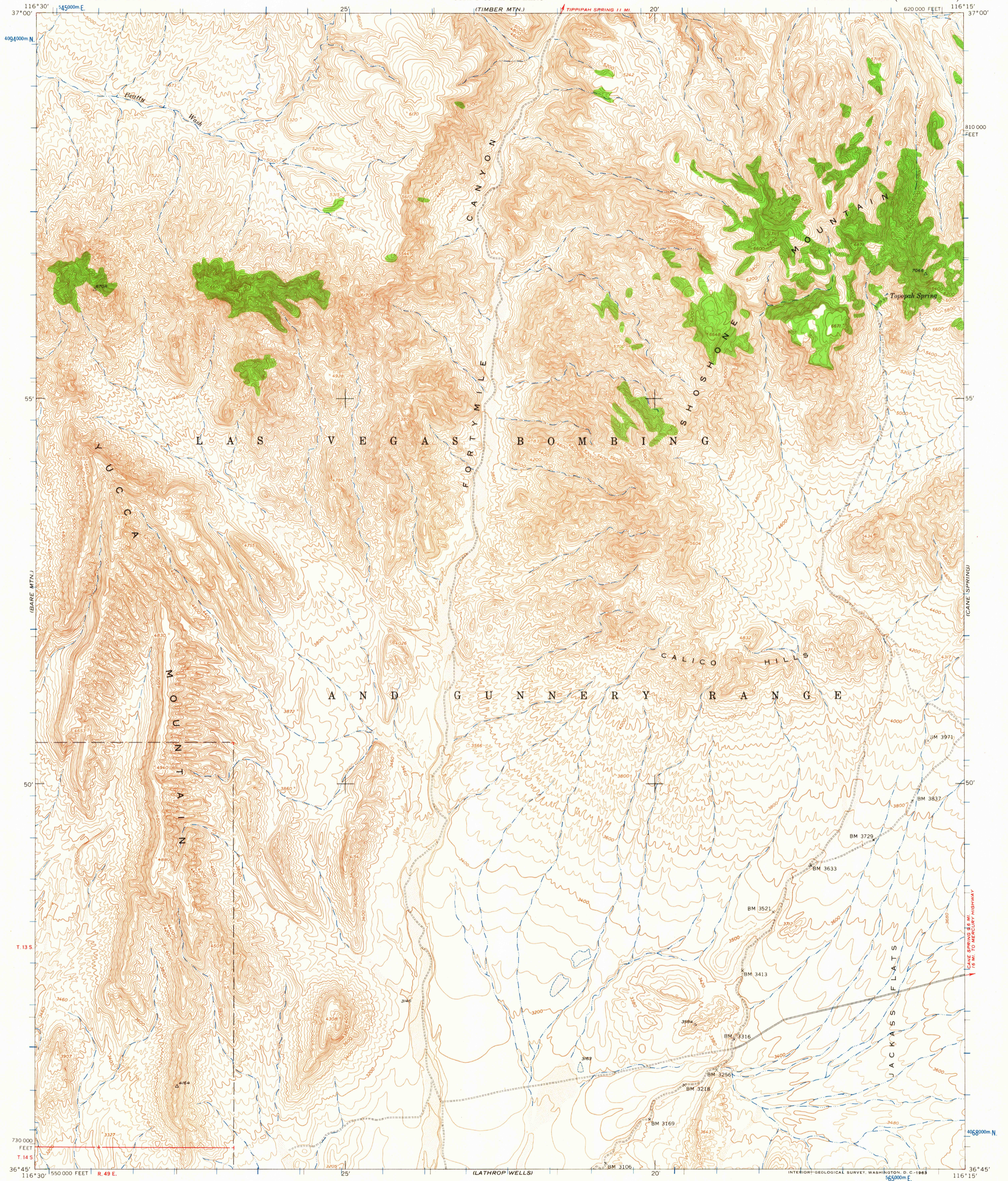
KAWICH 1:250,000

TIPPICAH SPRING

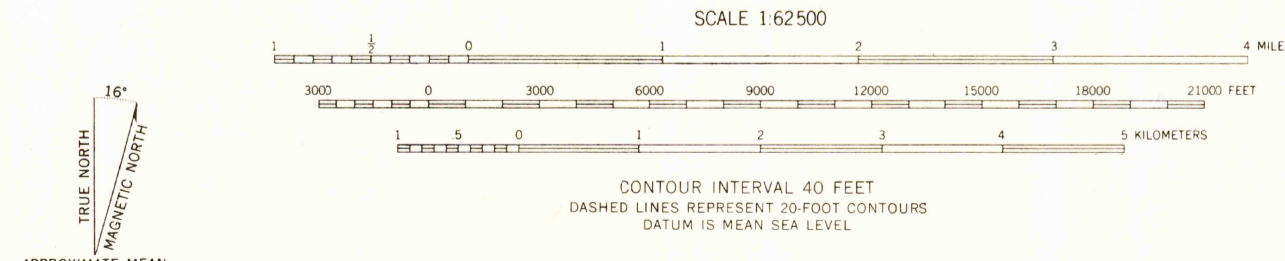
UNITED STATES
DEPARTMENT OF THE INTERIOR
GEOLOGICAL SURVEY

UNITED STATES
DEPARTMENT OF THE ARMY
CORPS OF ENGINEERS

TOPOPAH SPRING QUADRANGLE
NEVADA—NYE CO.
15 MINUTE SERIES (TOPOGRAPHIC)



Mapped by the Army Map Service
Published for civil use by the Geological Survey
Control by USCGS and USCE
Topography from aerial photographs by photogrammetric methods
Aerial photographs taken 1952. Field check 1952
Polyconic projection. 1927 North American datum
10,000-foot grid based on Nevada coordinate system, central zone
1000-meter Universal Transverse Mercator grid ticks,
zone 11, shown in blue
Unchecked elevations are shown in brown



ROAD CLASSIFICATION
Light duty ——— Unimproved dirt - - - - -
This area also covered by 7.5 minute,
1:24,000-scale maps: Topopah Spring 1961,
Topopah Spring NW 1961, Topopah Spring SW 1961,
and Jackass Flats 1961

APPROXIMATE MEAN
DECLINATION, 1952

FOR SALE BY U. S. GEOLOGICAL SURVEY, DENVER 25, COLORADO OR WASHINGTON 25, D. C.
A FOLDER DESCRIBING TOPOGRAPHIC MAPS AND SYMBOLS IS AVAILABLE ON REQUEST

USGS
Historical File
Topographic Division
NEVADA
QUADRANGLE LOCATION
TOPOPAH SPRING, NEV.
N3645—W11615/15
1952

2685