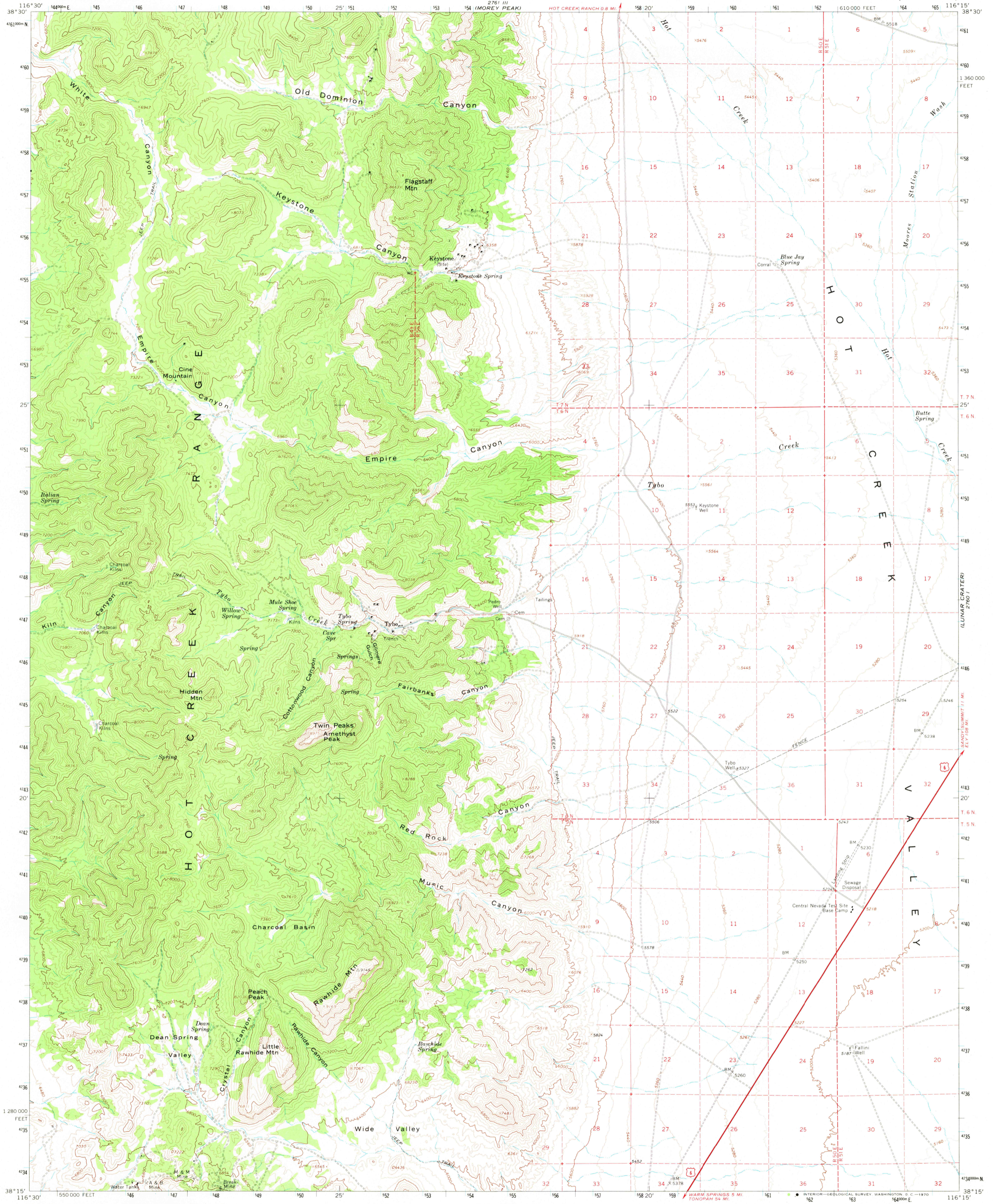
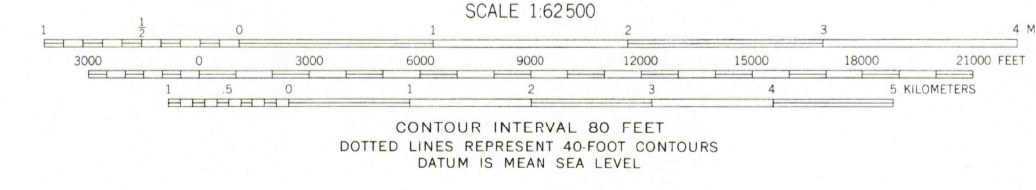


201 U.
MOORE'S STATION



Mapped by the Atomic Energy Commission and the Geological Survey
Edited and published by the Geological Survey
Control by USGS, USC&GS, and AEC
Topography by photogrammetric methods from aerial
photographs taken 1967. Field checked 1968
Polyconic projection. 1927 North American datum
10,000-foot grid based on Nevada coordinate system, central zone
1000-meter Universal Transverse Mercator grid ticks,
zone 11, shown in blue
Where omitted, land lines have not been established
or are not shown because of insufficient data



ROAD CLASSIFICATION

- Primary highway, all weather, hard surface
- Light-duty road, all weather, improved surface
- Unimproved road, fair or dry weather
- U.S. Route

QUADRANGLE LOCATION

THIS MAP COMPLIES WITH NATIONAL MAP ACCURACY STANDARDS
FOR SALE BY U.S. GEOLOGICAL SURVEY, DENVER, COLORADO 80225, OR WASHINGTON, D. C. 20242
A FOLDER DESCRIBING TOPOGRAPHIC MAPS AND SYMBOLS IS AVAILABLE ON REQUEST

TYBO, NEV.
N3815—W11615/15
1968
AMS 2760 IV—SERIES V796