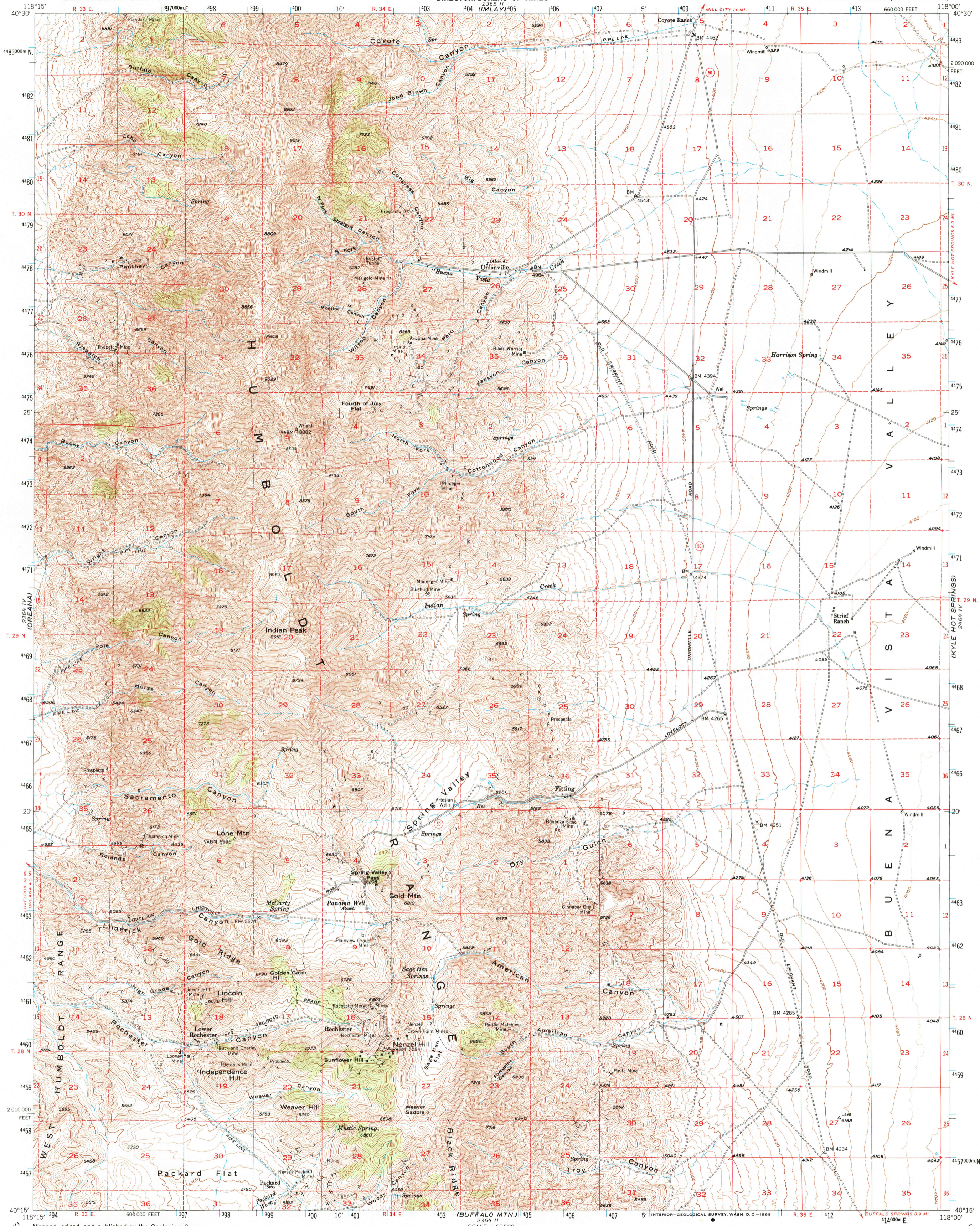
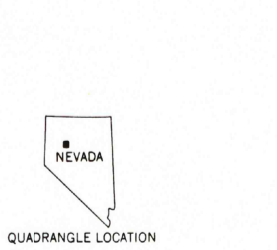
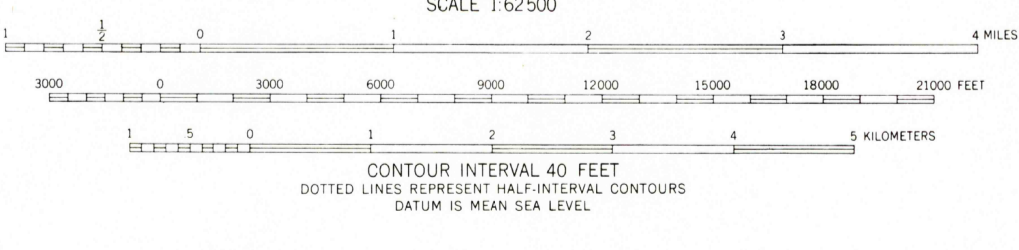
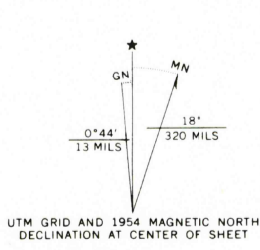


2465 III  
(DUN GLEN)



Mapped, edited, and published by the Geological Survey  
Control by USGS  
Topography from aerial photographs by multiplex methods  
Aerial photographs taken 1952. Field check 1954  
Polyconic projection. 1927 North American datum  
10,000-foot grid based on Nevada coordinate system, west zone  
Dashed land lines indicate approximate locations  
Unchecked elevations are shown in brown  
1000-meter Universal Transverse Mercator grid ticks,  
zone 11, shown in blue



ROAD CLASSIFICATION  
Light-duty ——— Unimproved dirt - - - - -  
State Route ○

UNIONVILLE, NEV.  
N4015-W11800/15  
1954  
AMS 2364 I-SERIES V796

THIS MAP COMPLIES WITH NATIONAL MAP ACCURACY STANDARDS  
FOR SALE BY U. S. GEOLOGICAL SURVEY, DENVER, COLORADO 80225 OR WASHINGTON, D. C. 20242  
A FOLDER DESCRIBING TOPOGRAPHIC MAPS AND SYMBOLS IS AVAILABLE ON REQUEST