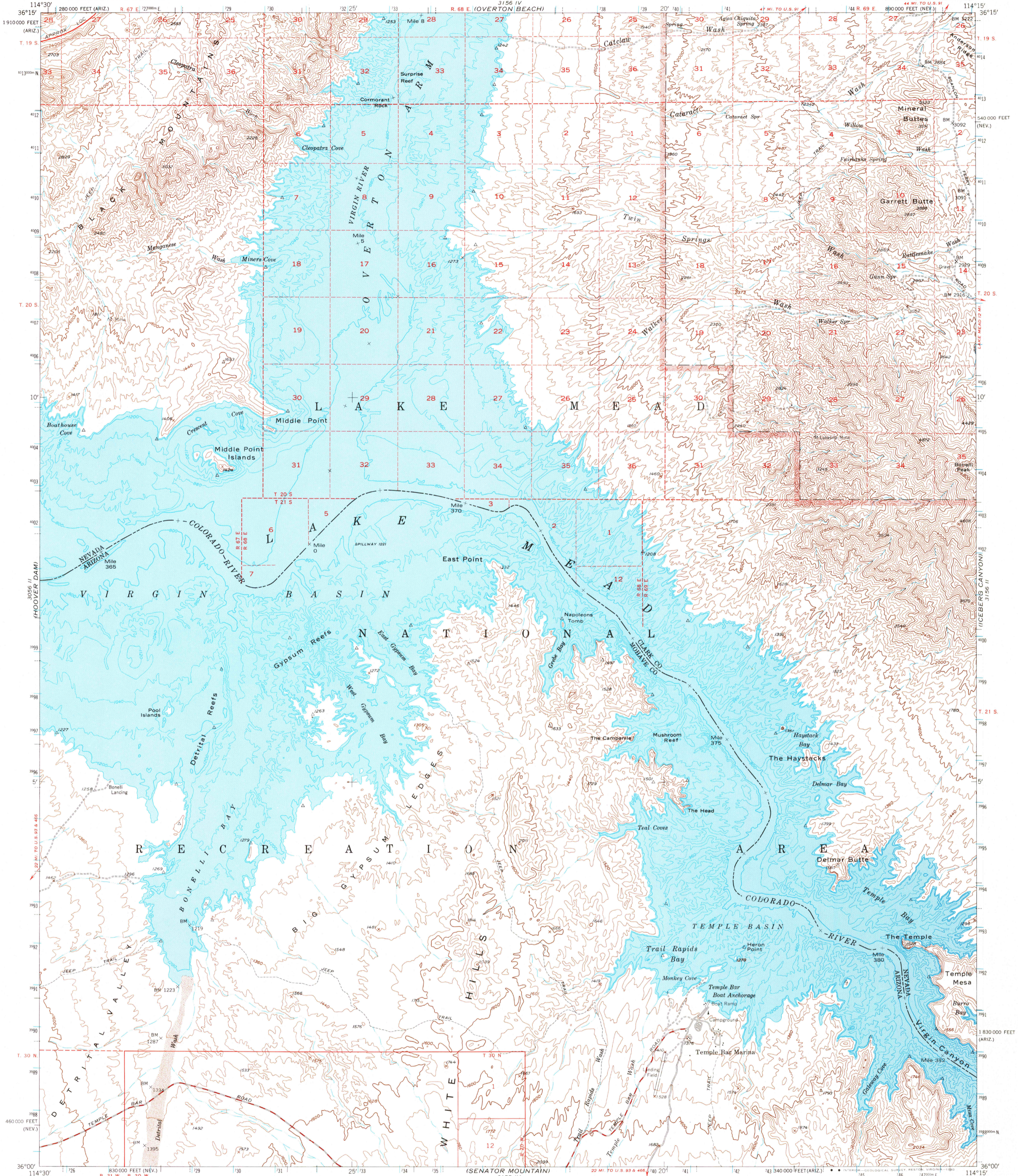
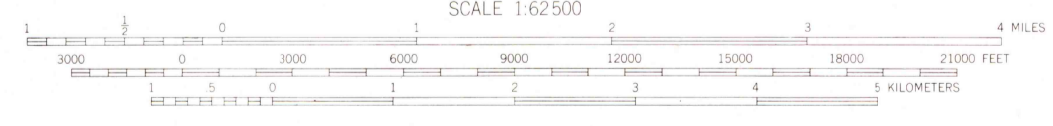
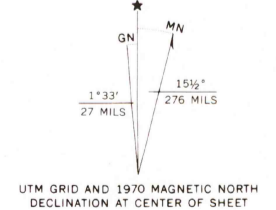


UNITED STATES
DEPARTMENT OF THE INTERIOR
GEOLOGICAL SURVEY

VIRGIN BASIN QUADRANGLE
NEVADA—ARIZONA
15 MINUTE SERIES (TOPOGRAPHIC)



Mapped, edited, and published by the Geological Survey
Control by USGS and USC&GS
Topography from aerial photographs by multiplex methods
Aerial photographs taken 1950. Field check 1953
Polyconic projection. 1927 North American datum
10,000-foot grid based on Nevada coordinate system,
east zone, and Arizona coordinate system, west zone
Underwater contours compiled from USDA maps
and later sedimentation studies
1000-meter Universal Transverse Mercator grid ticks,
zone 10, shown in blue
To place on the predicted North American Datum 1983
move the projection lines 14 meters north and
72 meters east
There may be private inholdings within the boundaries of
the National or State reservations shown on this map



CONTOUR INTERVAL 80
NATIONAL GEODETIC VERTICAL DATUM OF 1929

THIS MAP COMPLIES WITH NATIONAL MAP ACCURACY STANDARDS
FOR SALE BY U. S. GEOLOGICAL SURVEY, DENVER, COLORADO 80225, OR RESTON, VIRGINIA 22092
A FOLDER DESCRIBING TOPOGRAPHIC MAPS AND SYMBOLS IS AVAILABLE ON REQUEST



ROAD CLASSIFICATION
Secondary highway, all weather. Light-duty road, all weather,
hard surface. Improved surface.
Unimproved road, fair or dry
weather.
Roads added after 1954, not field checked.

VIRGIN BASIN, NEV.-ARIZ.
N3600—W1415/15

1953
MINOR CORRECTIONS MADE 1970
DMA 3156 III—SERIES V796

SEP 21 1988