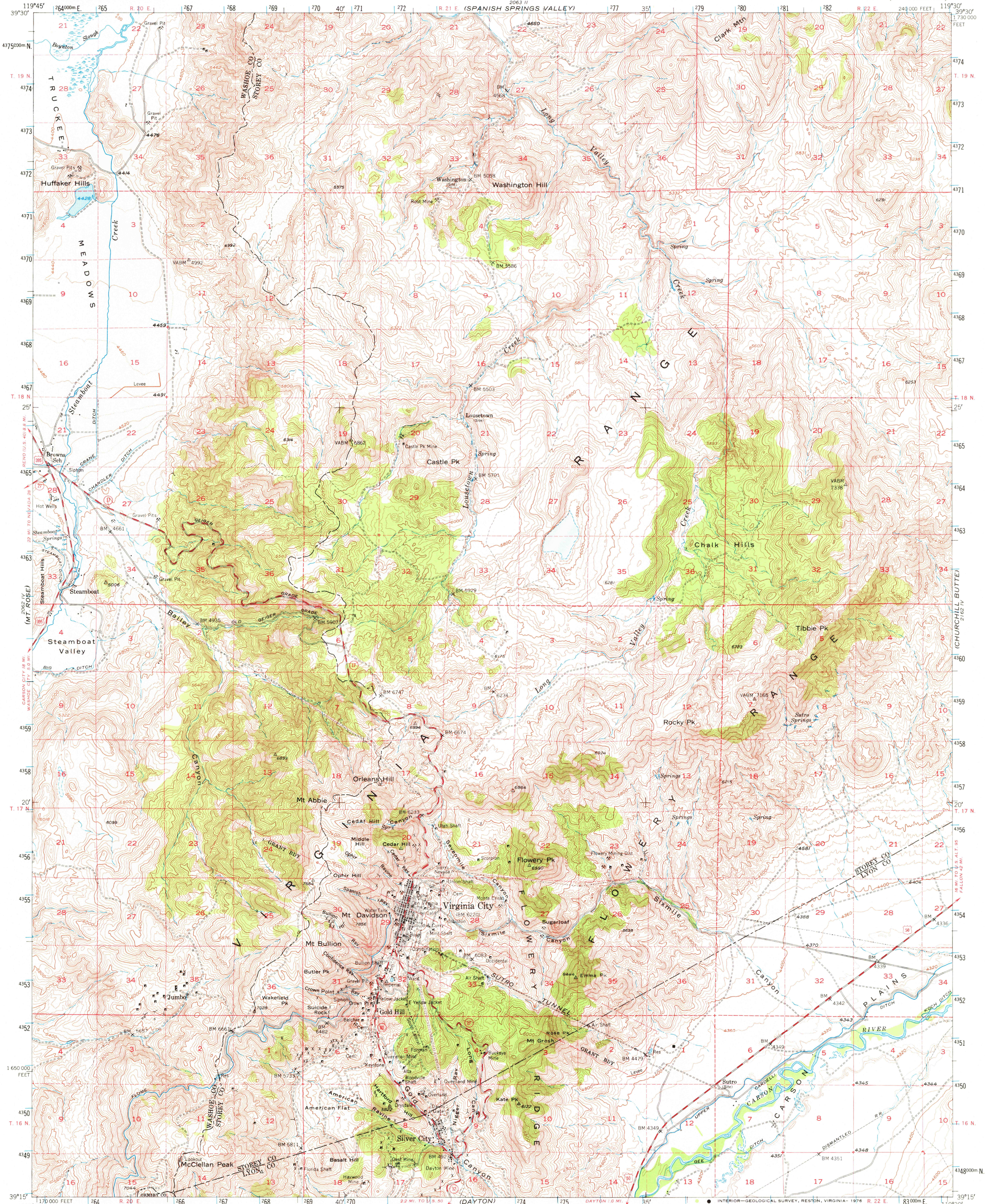


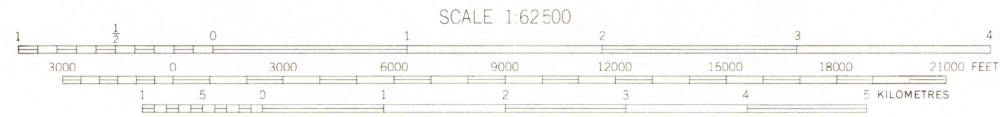
UNITED STATES
DEPARTMENT OF THE INTERIOR
GEOLOGICAL SURVEY

VIRGINIA CITY QUADRANGLE
NEVADA
15 MINUTE SERIES (TOPOGRAPHIC)



Mapped, edited, and published by the Geological Survey
Control by USGS and USC&GS
Topography from aerial photographs by multiplex methods
Aerial photographs taken 1948. Field check 1950
Polyconic projection. 1927 North American Datum
10,000-foot grid based on Nevada coordinate system,
west zone
Dashed land lines indicate approximate location
Unchecked elevations are shown in brown
1000-metre Universal Transverse Mercator grid ticks,
zone 11, shown in blue

UTM GRID AND 1950 MAGNETIC NORTH
DECLINATION AT CENTER OF SHEET



CONTOUR INTERVAL 40 FEET
DOTTED LINES REPRESENT HALF-INTERVAL CONTOURS
NATIONAL GEODETIC VERTICAL DATUM OF 1929

THIS MAP COMPLIES WITH NATIONAL MAP ACCURACY STANDARDS
FOR SALE BY U.S. GEOLOGICAL SURVEY, DENVER, COLORADO 80225, OR RESTON, VIRGINIA 22092
A FOLDER DESCRIBING TOPOGRAPHIC MAPS AND SYMBOLS IS AVAILABLE ON REQUEST

ROAD CLASSIFICATION
Heavy-duty Lane Lane Light-duty
Medium-duty Lane Unimproved dirt
 U.S. Route State Route

VIRGINIA CITY, NEV.
N3915-W11930/15

OCT 20 1976

USGS
Historical File
Topographic Division

1950
AMS 2062 1-SERIES V796