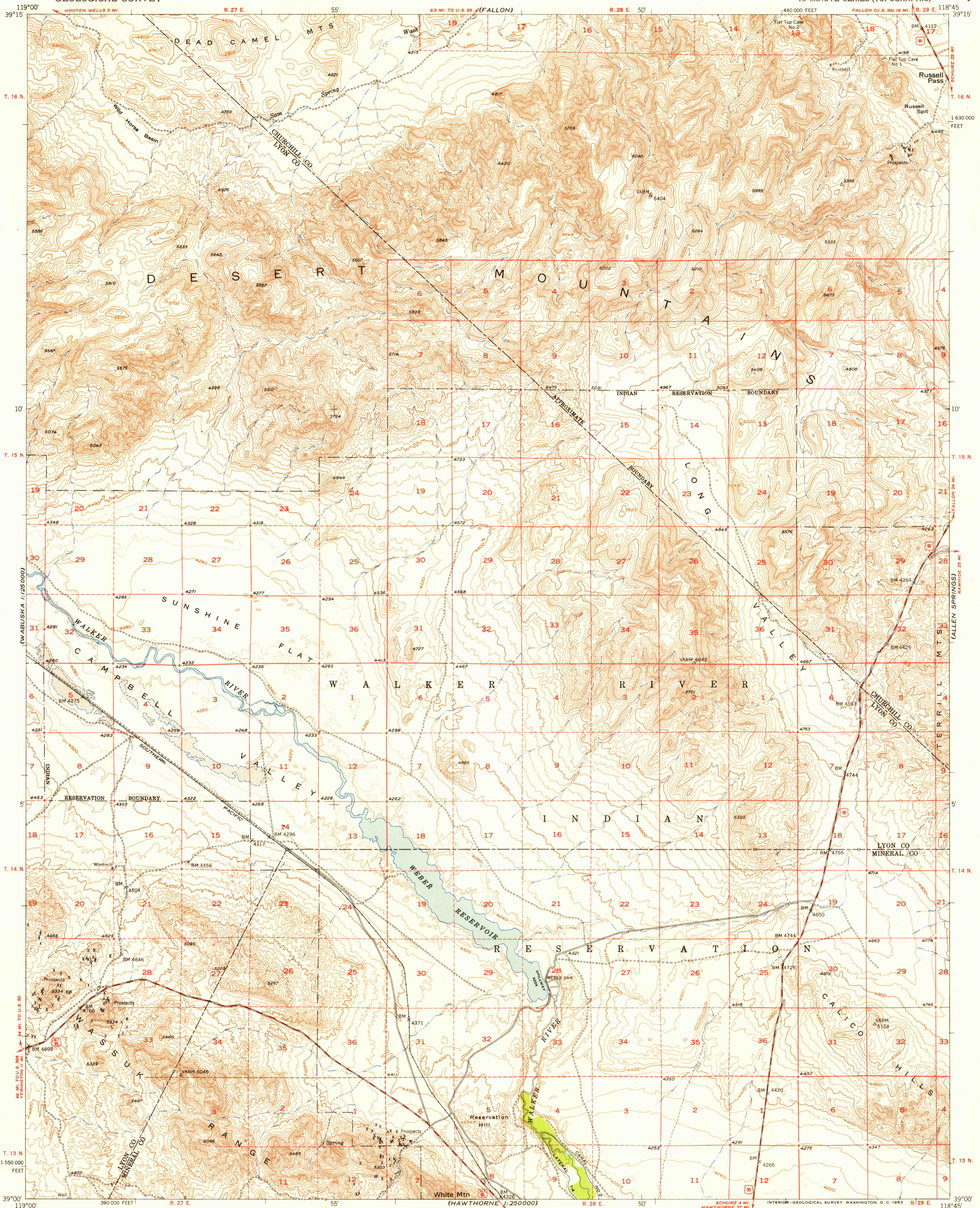


(WABUSKA)
1:25000

UNITED STATES
DEPARTMENT OF THE INTERIOR
GEOLOGICAL SURVEY

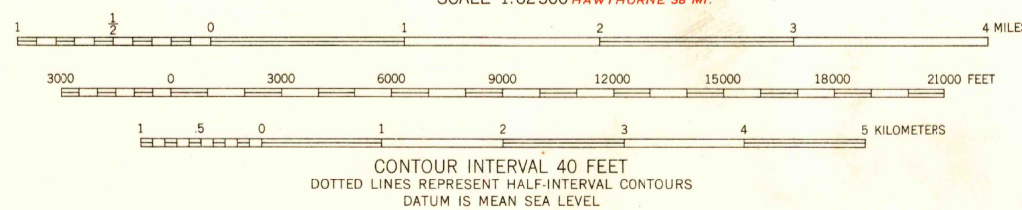
WEBER RESERVOIR QUADRANGLE
NEVADA
15 MINUTE SERIES (TOPOGRAPHIC)

(CARSON LAKE)



Maped, edited, and published by the Geological Survey
Control by USGS and USC&GS
Topography from aerial photographs by multiplex methods
and by plane-table surveys 1951. Aerial photographs taken 1948
Polyconic projection. 1927 North American datum
10,000-foot grid based on Nevada coordinate system, west zone
Dashed land lines indicate approximate locations
Unchecked elevations are shown in brown

TRUE NORTH
MAGNETIC NORTH
APPROXIMATE MEAN
DECLINATION, 1951



ROAD CLASSIFICATION
Heavy-duty 4 LANE 6 LANE Light-duty
Medium-duty 4 LANE 6 LANE Unimproved dirt
U. S. Route State Route



WEBER RESERVOIR, NEV.
N3900-W11845/15

1951

THIS MAP COMPLIES WITH NATIONAL MAP ACCURACY STANDARDS
FOR SALE BY U. S. GEOLOGICAL SURVEY, FEDERAL CENTER, DENVER, COLORADO OR WASHINGTON 25, D. C.
A FOLDER DESCRIBING TOPOGRAPHIC MAPS AND SYMBOLS IS AVAILABLE ON REQUEST

BELOIT COLLEGE LIBRARY
BELOIT, WISCONSIN